



2026

SUZUKI GENUINE MARINE PARTS AND ACCESSORIES

THE ULTIMATE OUTBOARD MOTOR



Please read your Owner's Manual carefully. Never operate the boat while under the influence of alcohol or other drugs. Always wear a personal flotation device when boating. Please operate your outboard safely and responsibly.

Suzuki encourages you to operate your boat safely and with respect for the marine environment.

Specifications, appearances, equipment, colors, materials and other items of "SUZUKI" products shown in this catalogue are subject to change by manufacturers at any time without notice and they may vary depending on local conditions or requirements. Some models are not available in some territories. Each model might be discontinued without notice. Please enquire at your local dealer for details of any such changes. Actual body colors might differ from the colors in this brochure.



Suzuki Motor Corporation

300 TAKATSUKA-CHO, CHUO-KU, HAMAMATSU-SHI, SHIZUOKA 432-8611 JAPAN
www.globalsuzuki.com

2026 SUZUKI GENUINE MARINE P&A
Issued: November 2025





INDEX

SUZUKI ULTIMATE RIGGING SELECTOR (04-05)

04 SUZUKI ULTIMATE RIGGING SELECTOR

OPERATION SYSTEMS (06-47)

06 SUZUKI PRECISION CONTROL (SPC)
16 MECHANICAL REMOTE CONTROL
30 KEYLESS START SYSTEM
32 SUZUKI MULTI-FUNCTION GAUGE (SMG4)
40 ANALOGUE INSTRUMENT
42 STEERING
45 ELECTRICAL PARTS
46 FUEL SYSTEM

SUZUKI PROPELLERS (48-53)

48 WATERGRIP
50 PROPELLER LINE-UP

MAINTAINING YOUR SUZUKI (54-59)

54 CARE & MAINTENANCE ITEM
56 OTHER ITEMS
58 MAINTENANCE KIT

SUZUKI CONNECTED TECHNOLOGIES (60-63)

60 GATEWAY
62 SUZUKI DIAGNOSTIC SYSTEM MOBILE PLUS

APPLICATION CHART (64-65)

SUZUKI ULTIMATE RIGGING SELECTOR

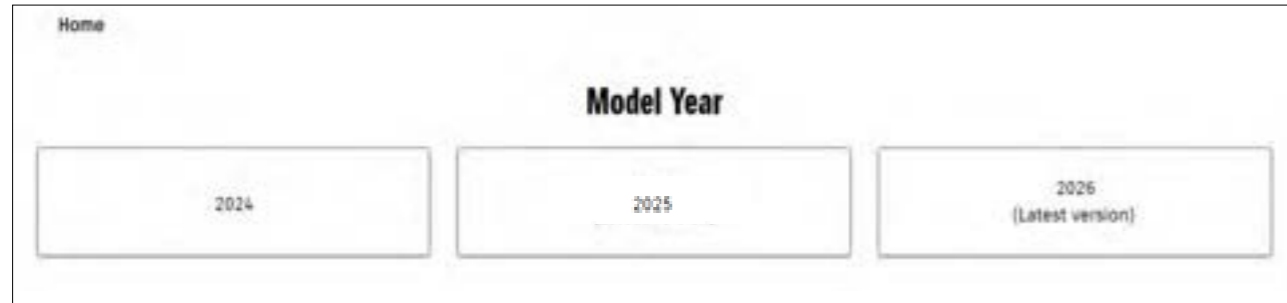
The Suzuki Ultimate Rigging Selector is a website designed to assist users in choosing which Part Number they will need for their desired application. It will shorten user's search time and improve their search accuracy. The Suzuki Ultimate Rigging Selector currently consists of 3 sections: Rigging Matching, Parts List, and PDF.

Website address:

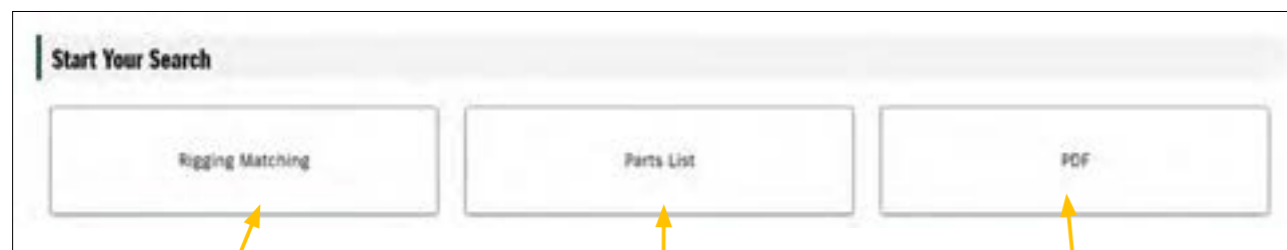
<https://www.globalsuzuki.com/marine/SuzukiUltimateRiggingSelector/>



Click QR code to homepage



The Suzuki Ultimate Rigging Selector currently consists of 3 sections:



select by engine model or control type

select by kits list

direct to catalogue PDF pages

RIGGING MATCHING

Rigging Matching section will assist users in finding the appropriate rigging combinations along with their preference. The system automatically narrows down matching results by only several clicks, and required items will be listed up like below. By clicking "OUTPUT" button, the list will be downloaded as an excel file.



PARTS LIST

Parts List section contains a list of Part Numbers and item photos. For some kits or sets, you can check the components by clicking on "kit detail".



PDF

PDF section is mainly for items that do not fit the format of above two sections. Items in this section are easier to check in a chart.



SUZUKI PRECISION CONTROL (SPC)



Suzuki Precision Control (SPC) is a technologically advanced computer-based control system with electronic wiring (Drive By Wire) that eliminates the source of friction and resistance. SPC processes throttle and shift commands in real time, delivering precise control and seamless operation.

SPC features:

- Control of up to 6 OBM units.
- Automatic Trim available by using SMG4.

Find out more here:



REMOTE CONTROL BOX

- Integrated SELECT and THROTTLE ONLY switches.
- Neutral lock function available on Single Top Mount.
- 1-lever operation for multiple outboards (Dual Top Mount).
- Integrated emergency stop switch (Flush Mount Only)



Single Top Mount



Dual Top Mount



Flush Mount

SWITCH PANEL

- Mounting bolts concealed for a smooth, luxurious finish.
 - 1 action start/stop for multi-installation boats.
(Engines start in order from port to starboard)
- ⇒ See page 10 for a reference of switch panel selection.



COMPONENT PARTS

1 REMOTE CONTROL BOX TOP MOUNT

FLUSH MOUNT



67200-98L30-000
for Single Engine



67200-98L10-000
for Multi-Engine



67200-98L20-000
for Single Engine

2 CONTROL PANEL



37120-98L00-000
for Dual Engine



37120-98L10-000
for Triple Engine



37120-98L20-000
for Quadruple Engine
PORT



37120-98L30-000
for Quadruple Engine,
Quintuple Engine
STBD



37120-98L40-000
for Quintuple Engine
PORT



37120-98L50-000
for Sextuple Engine
PORT



37120-98L60-000
for Sextuple Engine
STBD

3 BUZZER



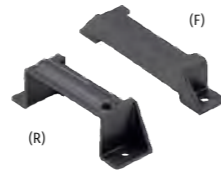
38500-93J90-000

4 BOAT CONTROL MODULE



36770-98L06-000

BCM HOLDER (F)
BCM HOLDER (R)



36775-98L00-000
(F)
36776-98L00-000
(R)

BCM CUSHION



33925-98L00-000

5 TERMINAL RESISTOR



33926-98L00-000

6 BATTERY LEAD WIRE



36625-98J10-000
2.2m / 7.2ft

36625-98J20-000
6.1m / 20ft

7 BCM #1 WIRING HARNESS



36623-98L00-000
for Single Engine

36623-98L30-000
for Dual or Triple
Engine

36623-98L40-000
for
Quadruple, Quintuple,
and Sextuple Engine

8 HARNESS, EMERGENCY SWITCH EXTENSION



36627-98L10-000
1.5m / 4.9ft

9 SIGNAL CONVERTER UNIT



37140-98L00-000

10 DUAL STATION WIRING HARNESS



36622-98L00-000

11 BCM #2 WIRING HARNESS



36624-98L00-000
for Single Engine

36624-98L10-000
for Dual or Triple
Engine

36624-98L20-000
for Quadruple,
Quintuple, and
Sextuple engines

12 ENGINE WIRING HARNESS



36621-98L00-000



COMPONENT PARTS

A MAIN SWITCH PANEL (KEYLESS START SYSTEM)



37290-98L10-000
Vertical type with
Emergency stop
switch



37290-98L20-000
Horizontal type with
Emergency stop
switch



37290-98L00-000
Ignition only, use with
emergency switch



37803-98L00-000

A MAIN SWITCH PANEL (REGULAR KEY)



37100-98L10-000
Vertical type with
Emergency stop
switch



37100-98L20-000
Horizontal type with
Emergency stop
switch



37100-98L00-000
Ignition only, use with
emergency switch



36620-98L00-000
6.5m / 21.3ft for
control system

36620-98L10-000
9.5m / 31.1ft for
control system

C MAIN WIRING HARNESS

D MAIN WIRING HARNESS EXTENSION

36620-98L20-000
2.0m / 6.5ft for
control system

E TROLL MODE SWITCH PANEL



37860-98L00-000

F R/C BOX HARNESS EXTENSION



36627-98L00-000
1.0m / 3.2ft

G HARNESS COMP, CAN EXT



36627-98L20-000
2.0m / 6.5ft for
triple engine, and
quadruple engine

C MAIN WIRING HARNESS

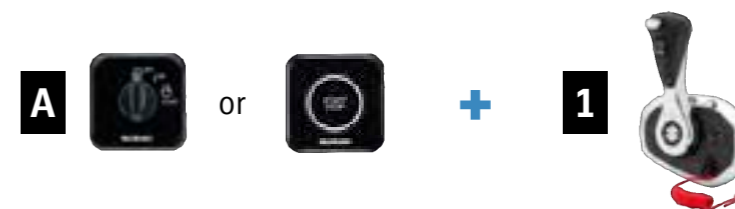
SWITCH PANEL SELECTION REFERENCE

Several options that may assist you in selecting your preferred choice.

OPTION 1 : Ignition Switch Panel + Emergency Switch Panel



OPTION 2 : Ignition Switch Panel + Flush Mount R/C Box (only)



OPTION 3 : Main Switch Panel



*You can find additional information about the Keyless Start System on pages 30 to 31.

EXTRA OPTION

COUNTER SELECT CONNECTOR

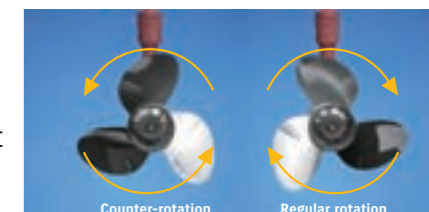


36612-98J20-000

Applicable Model DF150AP/175AP/200AP,
DF250AP/300AP
Converts to counter rotation specification.

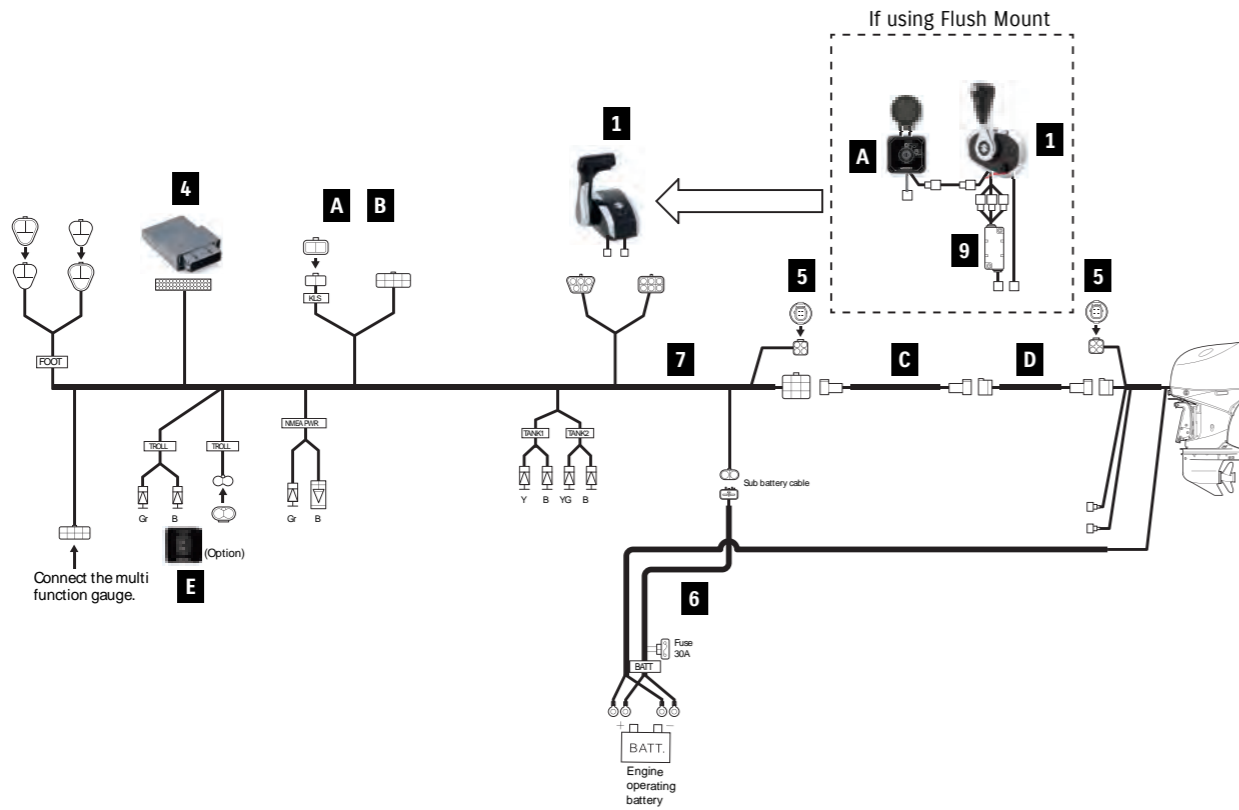


In multi-outboard installations on large boats, a counter-rotation outboard is usually paired with a regular rotation model to help keep the boat travelling on an even keel and in a straight line. Suzuki Selective Rotation eliminates the need to purchase a dedicated counter-rotation outboard by using a special switch that turns a regular rotation outboard into a counter-rotation model.

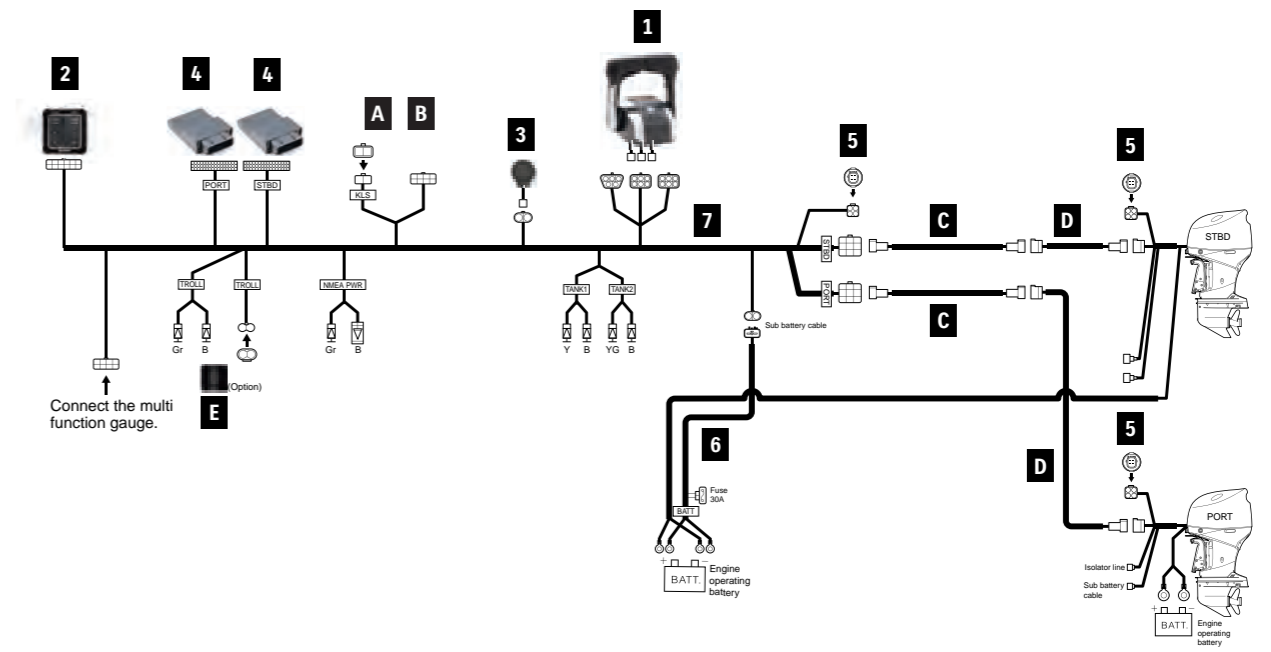


REMOTE-CONTROL KIT

SINGLE ENGINE



DUAL ENGINE



| For SINGLE ENGINE | | | Items Required | | | |
|-------------------|--|--|---------------------|--|-----------------|-----------------|
| | PART NUMBER | PART NAME | 1st STATION | | 2nd STATION | |
| | | | TOP MOUNT | FLUSH MOUNT | TOP MOUNT | FLUSH MOUNT |
| 1 | 67200-98L30-000 | REMOTE CONTROL BOX, SINGLE | 1 | - | 1 | - |
| | 67200-98L20-000 | FLUSH MOUNT | - | 1 | - | 1 |
| 4 | 36770-98L06-000 | BOAT CONTROL MODULE | 1 | 1 | 1 | 1 |
| | | R/C SUB-ASSEMBLY KIT | 67001-98L00-000 | 67001-98L10-000 | 67001-98LA0-000 | ** |
| 3 | 38500-93J90-000 | WARNING BUZZER | - | - | 1 | 1 |
| | 09407-08401-000 | WARNING BUZZER CLAMP | - | - | 1 | 1 |
| 4 | 36775-98L00-000 | BCM HOLDER (F) | 1 | 1 | 1 | 1 |
| | 36776-98L00-000 | BCM HOLDER (R) | 1 | 1 | 1 | 1 |
| | 33925-98L00-000 | BCM CUSHION | 1 | 1 | 1 | 1 |
| 5 | 33926-98L00-000 | TERMINAL RESISTOR | 2 | 2 | - | - |
| 6 | 36625-98J10-000 | BATTERY-LEAD | 1 | 1 | - | - |
| 7 | 36623-98L00-000 | BCM #1 WIRING HARNESS | 1 | 1 | - | - |
| 8 | 36627-98L10-000 | HARNESS ASSY, EM SWITCH EXT | - | 1 | - | 1 |
| 9 | 37140-98L00-000 | UNIT COMP, SIGNAL CONVERTER | - | 1 | - | 1 |
| 10 | 36622-98L00-000 | DUAL-STATION WIRING HARNESS | - | - | 1 | 1 |
| 11 | 36624-98L00-000 | BCM #2 WIRING HARNESS | - | - | 1 | 1 |
| | - 09403-13402-000 | HARNESS CLAMP | 10 | 10 | 10 | 10 |
| A | 37100-98L00-000 | MAIN SWITCH PANEL | | | | |
| | 37100-98L10-000 | MAIN SWITCH PANEL VERTICAL | | 1 | | |
| | 37100-98L20-000 | MAIN SWITCH PANEL HORIZONTAL | 1 | | | |
| | 37290-98L00-000 | MAIN SWITCH PANEL (Keyless) | Select type | 37100-98L00-000 or 37290-98L00-000 | 1 | 37290-98L00-000 |
| | 37290-98L10-000 | MAIN SWITCH PANEL VERTICAL (Keyless) | | | Select type | |
| 37290-98L20-000 | MAIN SWITCH PANEL HORIZONTAL (Keyless) | | | | | |
| B | 37803-98L00-000 | EMERGENCY SWITCH PANEL | 1* | | 1* | |
| C | 36620-98L00-000 | MAIN WIRING HARNESS 6.5m/21.3ft | 1 per station | | | |
| | 36620-98L10-000 | MAIN WIRING HARNESS 9.5m/31.1ft | 1 per station | | | |
| D | 36620-98L20-000 | MAIN WIRING HARNESS EXTENSION 2.0m/6.5ft | Select if necessary | | | |
| E | 37860-98L00-000 | TROLL MODE SWITCH PANEL | Optional | | | |
| F | 36627-98L00-000 | HARNESS COMP, R/CON EXT 1.0m/3.2ft | | 1 | | 1 |

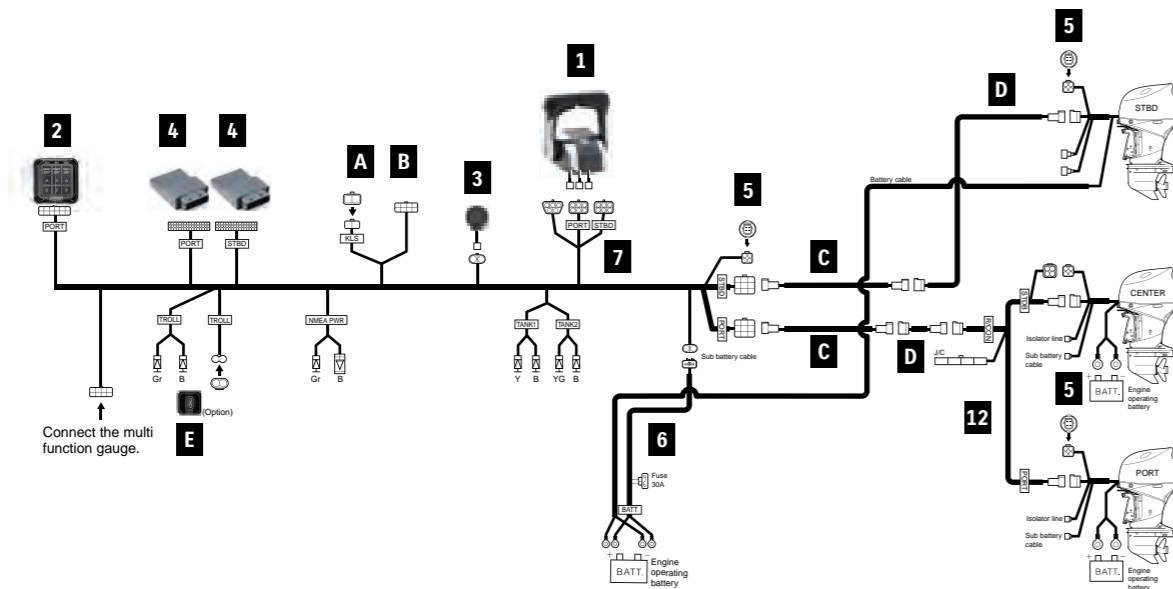
*Required when using 37100-98L00-000 or 37290-98L00-000 with TOP MOUNT.
**R/C SUB-ASSEMBLY KIT is NOT available. Please purchase each required item separately.

| For DUAL ENGINE | | | Items Required | |
|-----------------|--|--|---------------------|-----------------|
| | PART NUMBER | PART NAME | 1st STATION | 2nd STATION |
| | | | 1 | 67200-98L10-000 |
| 4 | 36770-98L06-000 | BOAT CONTROL MODULE | 2 | 2 |
| | | R/C SUB-ASSEMBLY KIT | 67001-98L20-000 | 67001-98LC0-000 |
| 2 | 37120-98L00-000 | CONTROL PANEL | 1 | 1 |
| 3 | 38500-93J90-000 | WARNING BUZZER | 1 | 2 |
| | 09407-08401-000 | WARNING BUZZER CLAMP | 1 | 2 |
| 4 | 36775-98L00-000 | BCM HOLDER (F) | 2 | 2 |
| | 36776-98L00-000 | BCM HOLDER (R) | 2 | 2 |
| | 33925-98L00-000 | BCM CUSHION | 2 | 2 |
| 5 | 33926-98L00-000 | TERMINAL RESISTOR | 3 | - |
| 6 | 36625-98J10-000 | BATTERY-LEAD | 1 | - |
| 7 | 36623-98L30-000 | BCM #1 WIRING HARNESS | 1 | - |
| 10 | 36622-98L00-000 | DUAL-STATION WIRING HARNESS | - | 1 |
| 11 | 36624-98L10-000 | BCM #2 WIRING HARNESS | - | 1 |
| - | 09403-13402-000 | HARNESS CLAMP | 15 | 10 |
| - | 36612-98J20-000 | CONNECTOR, COUNTER SELECT | 1 | 2 |
| A | 37100-98L00-000 | MAIN SWITCH PANEL | | |
| | 37100-98L10-000 | MAIN SWITCH PANEL VERTICAL | | |
| | 37100-98L20-000 | MAIN SWITCH PANEL HORIZONTAL | 1 | |
| | 37290-98L00-000 | MAIN SWITCH PANEL (Keyless) | Select type | |
| | 37290-98L10-000 | MAIN SWITCH PANEL VERTICAL (Keyless) | | 1 |
| 37290-98L20-000 | MAIN SWITCH PANEL HORIZONTAL (Keyless) | | Select type | |
| B | 37803-98L00-000 | EMERGENCY SWITCH PANEL | 1* | 1* |
| C | 36620-98L00-000 | MAIN WIRING HARNESS 6.5m/21.3ft | 2 per station | |
| | 36620-98L10-000 | MAIN WIRING HARNESS 9.5m/31.1ft | 2 per station | |
| D | 36620-98L20-000 | MAIN WIRING HARNESS EXTENSION 2.0m/6.5ft | Select if necessary | |
| E | 37860-98L00-000 | TROLL MODE SWITCH PANEL | Optional | |
| F | 36627-98L00-000 | HARNESS COMP, R/CON EXT 1.0m/3.2ft | Select if necessary | |

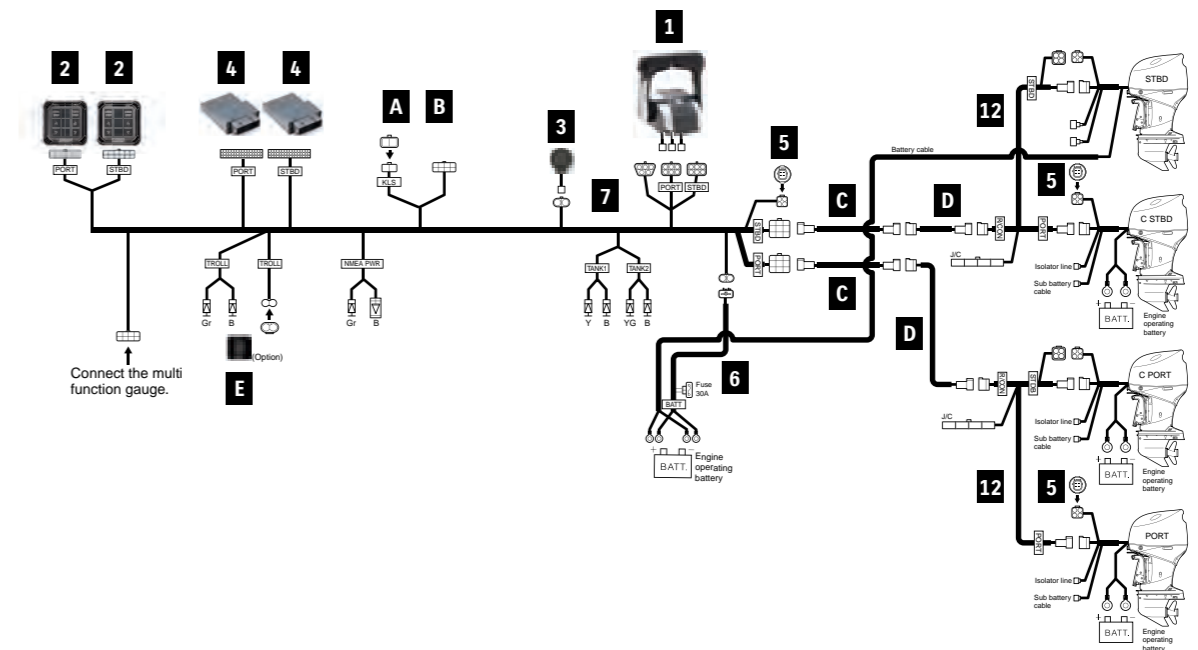
*Required when using 37100-98L00-000 or 37290-98L00-000 with TOP MOUNT.

REMOTE-CONTROL KIT

TRIPLE ENGINE



QUADRUPLE ENGINE



| For TRIPLE ENGINE | | | Items Required | |
|-------------------|-----------------|--|---------------------|------------------|
| PART NUMBER | PART NAME | | 1st STATION | 2nd STATION |
| 1 | 67200-98L10-000 | REMOTE CONTROL BOX, DUAL | 1 | 1 |
| 4 | 36770-98L06-000 | BOAT CONTROL MODULE | 2 | 2 |
| | | R/C SUB-ASSEMBLY KIT | 67001-98L30-000 | ** |
| 2 | 37120-98L10-000 | CONTROL PANEL | 1 | 1 |
| 3 | 38500-93J90-000 | WARNING BUZZER | 1 | 2 |
| | 09407-08401-000 | WARNING BUZZER CLAMP | 1 | 2 |
| 4 | 36775-98L00-000 | BCM HOLDER (F) | 2 | 2 |
| | 36776-98L00-000 | BCM HOLDER (R) | 2 | 2 |
| | 33925-98L00-000 | BCM CUSHION | 2 | 2 |
| 5 | 33926-98L00-000 | TERMINAL RESISTOR | 3 | - |
| 6 | 36625-98J10-000 | BATTERY-LEAD | 1 | - |
| 7 | 36623-98L30-000 | BCM #1 WIRING HARNESS | 1 | - |
| 10 | 36622-98L00-000 | DUAL-STATION WIRING HARNESS | - | 1 |
| 11 | 36624-98L10-000 | BCM #2 WIRING HARNESS | - | 1 |
| 12 | 36621-98L00-000 | ENGINE WIRING HARNESS | 1 | - |
| - | 09403-13402-000 | HARNESS CLAMP | 18 | 10 |
| - | 36612-98J20-000 | CONNECTOR, COUNTER SELECT | 1 | - |
| A | 37100-98L00-000 | MAIN SWITCH PANEL | 1 Select type | 1 Select type |
| | 37100-98L10-000 | MAIN SWITCH PANEL VERTICAL | | |
| | 37100-98L20-000 | MAIN SWITCH PANEL HORIZONTAL | | |
| | 37290-98L00-000 | MAIN SWITCH PANEL (Keyless) | | |
| | 37290-98L10-000 | MAIN SWITCH PANEL VERTICAL (Keyless) | | |
| | 37290-98L20-000 | MAIN SWITCH PANEL HORIZONTAL (Keyless) | | |
| B | 37803-98L00-000 | EMERGENCY SWITCH PANEL | 1* | 1* |
| C | 36620-98L00-000 | MAIN WIRING HARNESS 6.5m/21.3ft | 2 per station | |
| | 36620-98L10-000 | MAIN WIRING HARNESS 9.5m/31.1ft | | |
| D | 36620-98L20-000 | MAIN WIRING HARNESS EXTENSION 2.0m/6.5ft | Select if necessary | |
| E | 37860-98L00-000 | TROLL MODE SWITCH PANEL | Optional | |
| F | 36627-98L00-000 | HARNESS COMP, R/CON EXT 1.0m/3.2ft | Select if necessary | |
| G | 36627-98L20-000 | HARNESS COMP, CAN EXT 2.0m/6.5ft | Select if necessary | |

*Required when using 37100-98L00-000 or 37290-98L00-000 with TOP MOUNT.
**R/C SUB-ASSEMBLY KIT is NOT available. Please purchase each required item separately.

| For QUADRUPLE ENGINE | | | Items Required** | |
|----------------------|-----------------|--|---------------------|------------------|
| PART NUMBER | PART NAME | | 1st STATION | 2nd STATION |
| 1 | 67200-98L10-000 | REMOTE CONTROL BOX, DUAL | 1 | 1 |
| 4 | 36770-98L06-000 | BOAT CONTROL MODULE | 2 | 2 |
| 2 | 37120-98L20-000 | CONTROL PANEL PORT | 1 | 1 |
| | 37120-98L30-000 | CONTROL PANEL STBD | 1 | 1 |
| 3 | 38500-93J90-000 | WARNING BUZZER | 1 | 2 |
| | 09407-08401-000 | WARNING BUZZER CLAMP | 1 | 2 |
| 4 | 36775-98L00-000 | BCM HOLDER (F) | 2 | 2 |
| | 36776-98L00-000 | BCM HOLDER (R) | 2 | 2 |
| | 33925-98L00-000 | BCM CUSHION | 2 | 2 |
| 5 | 33926-98L00-000 | TERMINAL RESISTOR | 3 | - |
| 6 | 36625-98J10-000 | BATTERY-LEAD | 1 | - |
| 7 | 36623-98L40-000 | BCM #1 WIRING HARNESS | 1 | - |
| 10 | 36622-98L00-000 | DUAL-STATION WIRING HARNESS | - | 1 |
| 11 | 36624-98L20-000 | BCM #2 WIRING HARNESS | - | 1 |
| 12 | 36621-98L00-000 | ENGINE WIRING HARNESS | 2 | - |
| - | 09403-13402-000 | HARNESS CLAMP | 20 | 15 |
| - | 36612-98J20-000 | CONNECTOR, COUNTER SELECT | 2 | - |
| A | 37100-98L00-000 | MAIN SWITCH PANEL | 1 Select type | 1 Select type |
| | 37100-98L10-000 | MAIN SWITCH PANEL VERTICAL | | |
| | 37100-98L20-000 | MAIN SWITCH PANEL HORIZONTAL | | |
| | 37290-98L00-000 | MAIN SWITCH PANEL (Keyless) | | |
| | 37290-98L10-000 | MAIN SWITCH PANEL VERTICAL (Keyless) | | |
| | 37290-98L20-000 | MAIN SWITCH PANEL HORIZONTAL (Keyless) | | |
| B | 37803-98L00-000 | EMERGENCY SWITCH PANEL | 1* | 1* |
| C | 36620-98L00-000 | MAIN WIRING HARNESS 6.5m/21.3ft | 2 per station | |
| | 36620-98L10-000 | MAIN WIRING HARNESS 9.5m/31.1ft | | |
| D | 36620-98L20-000 | MAIN WIRING HARNESS EXTENSION 2.0m/6.5ft | Select if necessary | |
| E | 37860-98L00-000 | TROLL MODE SWITCH PANEL | Optional | |
| F | 36627-98L00-000 | HARNESS COMP, R/CON EXT 1.0m/3.2ft | Select if necessary | |
| G | 36627-98L20-000 | HARNESS COMP, CAN EXT 2.0m/6.5ft | Select if necessary | |

*Required when using 37100-98L00-000 or 37290-98L00-000 with TOP MOUNT.
**R/C SUB-ASSEMBLY KIT is NOT available. Please purchase each required item separately.

MECHANICAL REMOTE CONTROL



Mechanical Remote Control Boxes are designed for longevity and ease of use. To fit a wide range of Suzuki Outboard Motors, we offer Single and Dual Top Mount Remote Control Boxes, Flush Mount, Side Mount options. Additionally, a variety of parts and accessories are also available.

REMOTE CONTROL BOX

Single Top Mount*



Dual Top Mount



Flush Mount



Side Mount

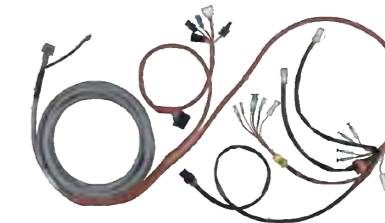


*The Single Top Mount Remote Control Box is equipped with a neutral lock switch to prevent accidental operation.

MAIN WIRING HARNESS (CAN connection)

The Main Wiring Hareness (CAN connection) provides mechanically controlled Suzuki outboard engines with access to the Automatic Trim and Keyless Start System. Please refer to page 19 to check applicable models and available harness lengths.

36620-93JA0/B0/C0



TWO OPTIONAL FEATURES AVAILABLE with CAN HARNESS

KEYLESS START SYSTEM

Applicable Model DF70A and above



This system allows you to start multiple engines by placing key-fob nearby.

ADVANTAGE

- Provides high security.
- No ignition key is necessary.

*Available with SMG4

- One push Start & Stop for up to 6 outboard motors.
- Waterproof Float Key Fob.
- Security support with immobilizer.



Note:

- If using the new Keyless Start System, please ensure to use the new switch panels.
- The Keyless Start System is only available in limited regions. If you are not sure about your market, please check with your local dealer.

AUTOMATIC TRIM

Applicable Model DF100C and above



The Automatic Trim adjust trim angle automatically depending on the engine RPM without your control.

ADVANTAGE

Helps to keep the appropriate trim angle and contribute to achieve faster top speed and better fuel efficiency.

*Available with SMG4

Functions available using the CAN Harness

| | DF40A-60A | DF70A-100B | DF100C-140B | DF150A-200A | DF200-250 |
|----------------------|-----------|------------|-------------|-------------|-----------|
| CAN Connection | ✓ | ✓ | ✓ | ✓ | ✓ |
| Automatic Trim | X | X | ✓ | ✓ | ✓ |
| Keyless Start System | X | ✓ | ✓ | ✓ | ✓ |

COMPONENT OF MECHANICAL REMOTE CONTROL

1 REMOTE CONTROL BOX TOP MOUNT

FLUSH MOUNT



67200-88L20-000
for Single Engine
Applicable Model DF8A-250



67200-88L13-000
for Dual Engine
Applicable Model DF70A-250



67200-93J34-000
for Single Engine
Applicable Model DF8A-250

SIDE MOUNT REMOTE CONTROL BOX

TWIN REMOTE-CONTROL ATTACHMENT KIT



67200-91J32-000
for Single Engine. Without IGN SW
Applicable Model DF4A-6A

67200-94J40-000
for Single Engine. With warning buzzer without PTT switch
Applicable Model DF8A-30A

67200-93J70-000
for Single Engine. With PTT switch
Applicable Model DF9.9B-250
CAN Harness required for using 67200-93J70-000.



67140-95601-000
Applicable Model DF9.9B-30A/100C-250

2 MAIN SWITCH PANEL (REGULAR KEY)



37100-98L10-000
Vertical type With Emergency stop switch
Applicable Model DF9.9B-250



37100-98L20-000
Horizontal type With Emergency stop switch
Applicable Model DF9.9B-250



37100-98L30-000
Dual Ignition With Emergency stop switch
Applicable Model DF9.9B-250



37100-98L00-000
Ignition switch only
Applicable Model DF9.9B-250

2 MAIN SWITCH PANEL (KEYLESS START SYSTEM WITH CAN CONNECTION)



37290-98L10-000
Vertical type with Emergency stop switch



37290-98L20-000
Horizontal type with Emergency stop switch



37290-98L00-000
Ignition switch only



3 EMERGENCY SWITCH PANEL

37803-98L00-000

4 MAIN WIRING HARNESS (CAN CONNECTION)

MAIN WIRING HARNESS EXTENSION



36620-93JA0-000
6.5m/21.3ft for Control system
Applicable Model DF40A-250

36620-93JB0-000
5.0m/16.4ft for Control system
Applicable Model DF40A-250

36620-93JC0-000
8.0m/26.2ft for Control system
Applicable Model DF40A-250



36620-93JD0-000
Extension, 2.0m/6.5ft
Applicable Model DF40A-250

36620-93JE0-000
Extension, 3.0m/9.8ft
Applicable Model DF40A-250

4 MAIN WIRING HARNESS (NON-CAN CONNECTION)

MAIN WIRING HARNESS EXTENSION



36620-93J70-000
6.5m/21.3ft for Control system
Applicable Model DF40A-250

36620-93J80-000
5.0m/16.4ft for Control system
Applicable Model DF40A-250

36620-93J90-000
8.0m/26.2ft for Control system
Applicable Model DF40A-250

36620-89L10-000
6.5m/21.3ft for Control system
Applicable Model DF8A/DF9.9B/15A/20A

36620-94L20-000
6.5m/21.3ft for Control system
Applicable Model DF25A/30A

36620-93J12-000
2.0m/6.5ft for Control system
Applicable Model DF8A/DF9.9B-250

36620-93J42-000
3.0m/9.8ft for Control system
Applicable Model DF8A/DF9.9B-250

5 REMOTE-CONTROL CABLE (THROTTLE AND SHIFT CABLE)



67320-93JA0-000
3.40 m / 11.0 ft
Applicable Model DF4A-250

67320-93J20-000
3.66 m / 12.0 ft
Applicable Model DF4A-250

67320-93JB0-000
4.00 m / 13.0 ft
Applicable Model DF4A-250

67320-93J00-000
2.44 m / 8.0 ft
Applicable Model DF4A-250

67320-93J30-000
4.27 m / 14.0 ft
Applicable Model DF4A-250

67320-93J90-000
2.70 m / 9.0 ft
Applicable Model DF4A-250

67320-93JC0-000
4.60 m / 15.0 ft
Applicable Model DF4A-250

67320-93J10-000
3.05 m / 10.0 ft
Applicable Model DF4A-250

67320-93J40-000
4.88 m / 16.0 ft
Applicable Model DF4A-250

67320-93JD0-000
5.20 m / 17.0 ft
Applicable Model DF4A-250

67320-93J50-000
5.49 m / 18.0 ft
Applicable Model DF4A-250

67320-93J60-000
6.10 m / 20.0 ft
Applicable Model DF4A-250

67320-93J70-000
6.71 m / 22.0 ft
Applicable Model DF4A-250

67320-93J80-000
7.32 m / 24.0 ft
Applicable Model DF4A-250

6 PTT SWITCH PANEL



37805-88L00-000
Applicable Model DF40A-250

BATTERY LEAD



36625-93J10-000
6.7 m / 21.9ft
Applicable Model DF100C-200A/
200-250

36625-93J01-000
3.9 m / 12.7ft
Applicable Model DF100C-200A/
200-250

SPACER KIT



67500-88L00-000
for Single Top-mount type
Applicable Model DF8A-250



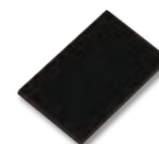
67500-88L10-000
for Dual Top-mount type
Applicable Model DF70A-250

7 KEYLESS CONTROL UNIT



37171-98L02-000
433MHz for CAN connection

CUSHION



32851-93J00-000

10 RELAY ASSY, KLS



38860-96L01-000

KEYLESS PARTS HOLDER



37173-96L10-000

8 HARNESS ASSY, KEYLESS CONTROL



36623-98LA0-000
for CAN connection

11 KEY FOB



37180-96L00-000
433MHz

HOLDER



32980-38F00-000

9 BUZZER ASSY



38500-93J90-000

12 HARNESS ASSY, KLS DUAL ENGINE



36621-98L31-000

13 WIRE COMP, CAN



36661-96L40-000

REMOTE CONTROL ATTACHMENT KIT

Converts ME model to REMOTE-CONTROL model.



67101-97L00-000

Applicable Model DF4A-6A

67130-89L40-000

Applicable Model DF9.9B/15A/20A

67130-94L30-000

Applicable Model DF25A/30A
(Year 2023~)

67130-94L20-000

Applicable Model DF25ATH/30ATH
(Year 2023~)

67130-99J02-000

Requires CLAMP BRACKET SET
(41100-99JL0-YAY)
Applicable Model DF8A/9.9A

CLAMP BRACKET SET

No photo available

41100-99JL0-YAY

Required to install
67130-99J02
Applicable Model DF8A/9.9A



EXTRA OPTION

RIGGING TUBE



990C0-20010-000

Applicable Model DF70A-350A
*Connect to the hose adapter
equipped on the engine

TROLL MODE SWITCH PANEL



37860-98L00-000

Applicable Model DF40A-350A
Activates SUZUKI Troll Mode
System and controls RPM
from idling engine speed up to
1200rpm at every 50rpm.



SUZUKI TROLL MODE SYSTEM

Troll Mode Switch:

An option for Remote Control models from DF40A and over, this system allows the user to adjust engine speed in 50rpm increments, giving highly precise control at low revs. With its own tachometer and control switch, it works alongside our multi-function gauges and analogue gauges.

Tiller Handle Models from DF40A and over except DF90AWQH have Suzuki Troll Mode System as standard equipment.

SINGLE ENGINE with CAN Connection (REGULAR KEY)

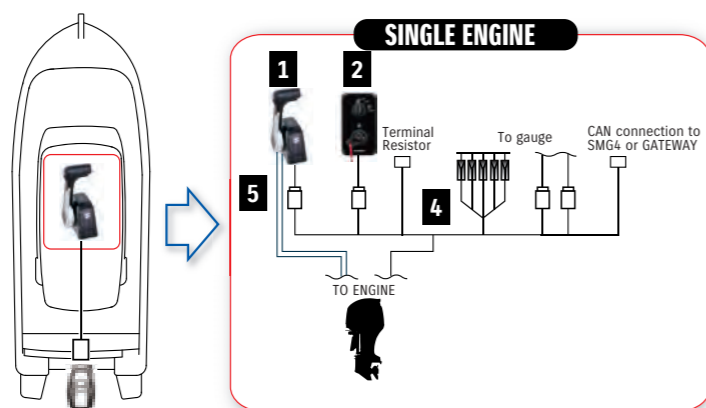
| For SINGLE ENGINE (SINGLE STATION, REGULAR KEY) | | | | Required Quantity | | |
|---|-----------------|------------------------------------|-----------|-------------------|------------|--|
| PART NUMBER | PART NAME | LENGTH | TOP-MOUNT | FLUSH-MOUNT | SIDE-MOUNT | |
| 1 | 67200-88L20-000 | REMOTE CONTROL BOX,SINGLE | 1 | - | - | |
| | 67200-93J34-000 | FLUSH MOUNT | - | 1 | - | |
| | 67200-93J70-000 | SIDE MOUNT | - | - | 1 | |
| 2 | 37100-98L10-000 | PANEL ASSY, MAIN SWITCH VERTICAL | 1 | 1 | - | |
| | 37100-98L20-000 | PANEL ASSY, MAIN SWITCH HORIZONTAL | | | | |
| | 37100-98L00-000 | MAIN SWITCH PANEL | | | | |
| 3 | 37803-98L00-000 | EMERGENCY SWITCH PANEL | *1 | *1 | - | |
| 4 | 36620-93JA0-000 | MAIN WIRING HARNESS | 1 | 1 | 1 | |
| | 36620-93JB0-000 | MAIN WIRING HARNESS | | | | |
| | 36620-93JC0-000 | MAIN WIRING HARNESS | | | | |
| | 36620-93JD0-000 | WIRE ASSY, REMOTE CONTROL EXT | | | | |
| | 36620-93JE0-000 | WIRE ASSY, REMOTE CONTROL EXT | | | | |
| 5 | 67320-93J00-000 | REMOTE CONTROL CABLES | Optional | Optional | Optional | |
| | 67320-93J90-000 | | | | | |
| | 67320-93J10-000 | | | | | |
| | 67320-93JA0-000 | | | | | |
| | 67320-93J20-000 | | | | | |
| | 67320-93JB0-000 | | | | | |
| | 67320-93J30-000 | | | | | |
| | 67320-93JC0-000 | | | | | |
| | 67320-93JD0-000 | | | | | |
| | 67320-93J50-000 | | | | | |
| | 67320-93J60-000 | | | | | |
| | 67320-93J70-000 | | | | | |
| 67320-93J80-000 | | | | | | |

*Only if using 37100-98L00-000

For KEYLESS START SYSTEM

| For SINGLE ENGINE (SINGLE STATION with KEYLESS SYSTEM) | | | | Required Quantity | |
|--|-----------------|------------------------------------|-----------|-------------------|--|
| PART NUMBER | PART NAME | LENGTH | TOP-MOUNT | FLUSH-MOUNT | |
| 1 | 67200-88L20-000 | REMOTE CONTROL BOX,SINGLE | 1 | - | |
| | 67200-93J34-000 | FLUSH MOUNT | - | 1 | |
| 2 | 37290-98L10-000 | PANEL ASSY, MAIN SWITCH VERTICAL | 1 | | |
| | 37290-98L20-000 | PANEL ASSY, MAIN SWITCH HORIZONTAL | | | |
| | 37290-98L00-000 | MAIN SWITCH PANEL | | | |
| 3 | 37803-98L00-000 | EMERGENCY SWITCH PANEL | *1 | | |
| 4 | 36620-93JA0-000 | MAIN WIRING HARNESS | 1 | | |
| | 36620-93JB0-000 | MAIN WIRING HARNESS | | | |
| | 36620-93JC0-000 | MAIN WIRING HARNESS | | | |
| | 36620-93JD0-000 | WIRE ASSY, REMOTE CONTROL EXT | | | |
| | 36620-93JE0-000 | WIRE ASSY, REMOTE CONTROL EXT | | | |
| 5 | 67320-93J00-000 | REMOTE CONTROL CABLES | Optional | Optional | |
| | 67320-93J90-000 | | | | |
| | 67320-93J10-000 | | | | |
| | 67320-93JA0-000 | | | | |
| | 67320-93J20-000 | | | | |
| | 67320-93JB0-000 | | | | |
| | 67320-93J30-000 | | | | |
| | 67320-93JC0-000 | | | | |
| | 67320-93JD0-000 | | | | |
| | 67320-93J50-000 | | | | |
| | 67320-93J60-000 | | | | |
| | 67320-93J70-000 | | | | |
| 67320-93J80-000 | | | | | |
| 7 | 37171-98L02-000 | CONTROLLER ASSY, KLS 433 | 1 | | |
| 8 | 36623-98LA0-000 | HARNESS ASSY, KLS CONT | 1 | | |
| 9 | 38500-93J90-000 | BUZZER ASSY | 1 | | |
| 10 | 38860-96L01-000 | RELAY ASSY, KLS | 1 | | |
| 11 | 37180-96L00-000 | KEY FOB 433 MHz | 2 | | |

*Only if using 37290-98L00-000

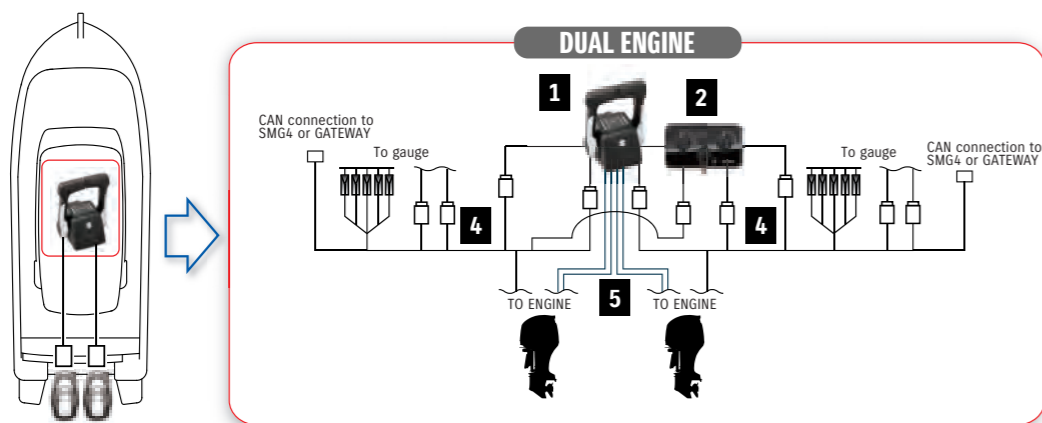


DUAL ENGINE with CAN Connection (REGULAR KEY)

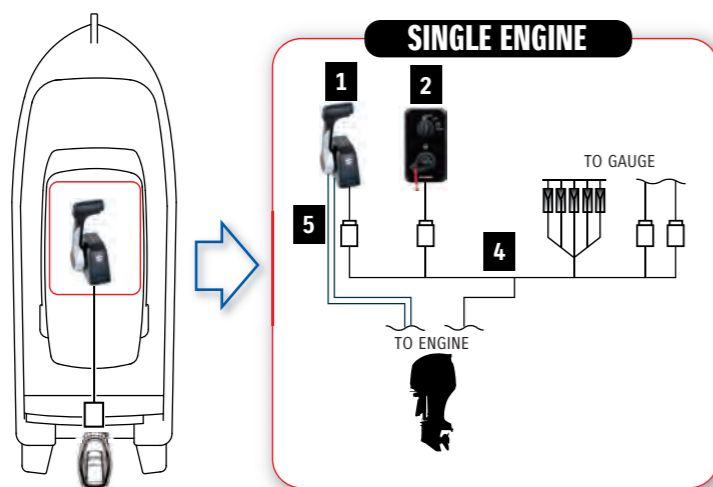
| For DUAL ENGINE (SINGLE STATION, REGULAR KEY) | | | | Required Quantity | |
|---|-----------------|-------------------------------|---------------|-------------------|------------|
| | PART NUMBER | PART NAME | LENGTH | TOP MOUNT | SIDE MOUNT |
| 1 | 67200-88L13-000 | REMOTE CONTROL BOX, DUAL | | 1 | - |
| | 67200-93J70-000 | SIDE MOUNT | | - | 2 |
| 2 | 37100-98L30-000 | PANEL ASSY, MAIN SWITCH MULTI | | 1 | - |
| 4 | 36620-93JA0-000 | MAIN WIRING HARNESS | 6.5m / 21.3ft | 2 | 2 |
| | 36620-93JB0-000 | MAIN WIRING HARNESS | 5.0m / 16.4ft | | |
| | 36620-93JC0-000 | MAIN WIRING HARNESS | 8.0m / 26.2ft | | |
| | 36620-93JD0-000 | WIRE ASSY, REMOTE CONTROL EXT | 2.0m / 6.5ft | Optional | Optional |
| | 36620-93JE0-000 | WIRE ASSY, REMOTE CONTROL EXT | 3.0m / 9.8ft | | |
| 5 | 67320-93J00-000 | REMOTE CONTROL CABLES | 2.4m / 8.0ft | Select four | |
| | 67320-93J90-000 | | 2.7m / 9.0ft | | |
| | 67320-93J10-000 | | 3.1m / 10.0ft | | |
| | 67320-93JA0-000 | | 3.4m / 11.0ft | | |
| | 67320-93J20-000 | | 3.7m / 12.0ft | | |
| | 67320-93JB0-000 | | 4.0m / 13.0ft | | |
| | 67320-93J30-000 | | 4.2m / 14.0ft | | |
| | 67320-93JC0-000 | | 4.6m / 15.0ft | | |
| | 67320-93J40-000 | | 4.8m / 16.0ft | | |
| | 67320-93JD0-000 | | 5.2m / 17.0ft | | |
| | 67320-93J50-000 | | 5.4m / 18.0ft | | |
| 67320-93J60-000 | 6.1m / 20.0ft | | | | |
| 67320-93J70-000 | 6.7m / 22.0ft | | | | |
| 67320-93J80-000 | 7.3m / 24.0ft | | | | |
| 13 | 36661-96L40-000 | WIRE COMP, CAN | | 1 | 1 |

For KEYLESS START SYSTEM

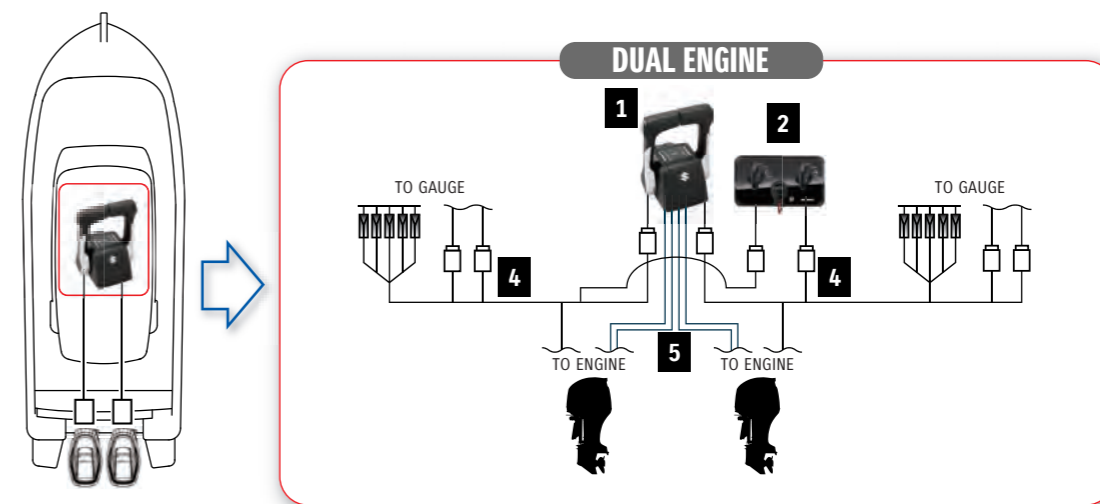
| For DUAL ENGINE (SINGLE STATION with KEYLESS SYSTEM) | | | | Required Quantity | |
|--|-----------------|-------------------------------|---------------|-------------------|------------|
| | PART NUMBER | PART NAME | LENGTH | TOP MOUNT | SIDE MOUNT |
| 1 | 67200-88L13-000 | REMOTE CONTROL BOX, DUAL | | 1 | - |
| 2 | 37290-98L00-000 | PANEL ASSY, ENG START SW | | - | 2 |
| | 37803-98L00-000 | PANEL ASSY, EMERGENCY SW | | - | 1 |
| 4 | 36620-93JA0-000 | MAIN WIRING HARNESS | 6.5m / 21.3ft | 2 | 2 |
| | 36620-93JB0-000 | MAIN WIRING HARNESS | 5.0m / 16.4ft | | |
| | 36620-93JC0-000 | MAIN WIRING HARNESS | 8.0m / 26.2ft | | |
| | 36620-93JD0-000 | WIRE ASSY, REMOTE CONTROL EXT | 2.0m / 6.5ft | Optional | Optional |
| | 36620-93JE0-000 | WIRE ASSY, REMOTE CONTROL EXT | 3.0m / 9.8ft | | |
| 5 | 67320-93J00-000 | REMOTE CONTROL CABLES | 2.4m / 8.0ft | Select four | |
| | 67320-93J90-000 | | 2.7m / 9.0ft | | |
| | 67320-93J10-000 | | 3.1m / 10.0ft | | |
| | 67320-93JA0-000 | | 3.4m / 11.0ft | | |
| | 67320-93J20-000 | | 3.7m / 12.0ft | | |
| | 67320-93JB0-000 | | 4.0m / 13.0ft | | |
| | 67320-93J30-000 | | 4.2m / 14.0ft | | |
| | 67320-93JC0-000 | | 4.6m / 15.0ft | | |
| | 67320-93J40-000 | | 4.8m / 16.0ft | | |
| | 67320-93JD0-000 | | 5.2m / 17.0ft | | |
| | 67320-93J50-000 | | 5.4m / 18.0ft | | |
| 67320-93J60-000 | 6.1m / 20.0ft | | | | |
| 67320-93J70-000 | 6.7m / 22.0ft | | | | |
| 67320-93J80-000 | 7.3m / 24.0ft | | | | |
| 7 | 37171-98L02-000 | CONTROLLER ASSY, KLS 433 | | 1 | - |
| 8 | 36623-98LA0-000 | HARNESS ASSY, KLS CONT | | 1 | - |
| 9 | 38500-93J90-000 | BUZZER ASSY | | 2 | - |
| 10 | 38860-96L01-000 | RELAY ASSY, KLS | | 1 | - |
| 11 | 37180-96L00-000 | KEY FOB 433 MHz | | 2 | - |
| 12 | 36621-98L31-000 | HARNESS ASSY, KLS DUAL ENG | | 1 | - |



SINGLE ENGINE with Non-CAN Connection



DUAL ENGINE with Non-CAN Connection



| For SINGLE ENGINE (Single Station) | | | | Required Quantity | | |
|------------------------------------|--|--|--|--|-------------|------------|
| PART NUMBER | PART NAME | LENGTH | | Top-MOUNT | FLUSH-MOUNT | SIDE-MOUNT |
| 1 | 67200-88L20-000 67200-93J34-000 67200-93J70-000 | REMOTE CONTROL BOX, SINGLE FLUSH MOUNT SIDE MOUNT | | 1 | - | - |
| 2 | 37100-98L00-000 37100-98L10-000 37100-98L20-000 | MAIN SWITCH PANEL IG SWITCH ONLY MAIN SWITCH PANEL VERTICAL MAIN SWITCH PANEL HORIZONTAL | | 1 (Select type) | | - |
| 3 | 37803-98L00-000 | PANEL ASSY, EMERGENCY SWITCH | | *1 | | - |
| 4 | 36620-93J70-000 36620-93J80-000 36620-93J90-000 36620-93J12-000 36620-93J41-000 | MAIN WIRING HARNESS MAIN WIRING HARNESS EXTENSION | 6.5m / 21.3ft 5.0m / 16.4ft 8.0m / 26.2ft 2.0m / 6.5ft 3.0m / 9.8ft | Select one Optional. Select if necessary. | | |
| 5 | 67320-93J00-000 67320-93J90-000 67320-93J10-000 67320-93JA0-000 67320-93J20-000 67320-93JB0-000 67320-93J30-000 67320-93JC0-000 67320-93J40-000 67320-93JD0-000 67320-93J50-000 67320-93J60-000 67320-93J70-000 67320-93J80-000 | REMOTE CONTROL CABLES | 2.4m / 8.0ft 2.7m / 9.0ft 3.1m / 10.0ft 3.4m / 11.0ft 3.7m / 12.0ft 4.0m / 13.0ft 4.2m / 14.0ft 4.6m / 15.0ft 4.8m / 16.0ft 5.2m / 17.0ft 5.4m / 18.0ft 6.1m / 20.0ft 6.7m / 22.0ft 7.3m / 24.0ft | Select two | | |

*Only needed if using 37100-98L00-000

| For DUAL ENGINE (Single station) | | | | Required Qty | |
|----------------------------------|--|---|--|-------------------------|--------|
| PART NUMBER | PART NAME | LENGTH | Qty | Single Station | |
| 1 | 67200-88L13-000 | REMOTE CONTROL BOX, DUAL | 1 | 1 | |
| 2 | 37100-98L00-000 37100-98L30-000 | MAIN SWITCH PANEL IG SWITCH ONLY DUAL IGNITION WITH E/S SWITCH | 2 1 | Select -98L00 OR -98L30 | |
| 3 | 37803-98L00-000 | PANEL ASSY, EMERGENCY SWITCH | *1 | *1 | |
| 4 | 36620-93J70-000 36620-93J80-000 36620-93J90-000 36620-93J12-000 36620-93J42-000 | MAIN WIRING HARNESS MAIN WIRING HARNESS EXTENSION | 6.5m / 21.3ft 5.0m / 16.4ft 8.0m / 26.2ft 2.0m / 6.5ft 3.0m / 9.8ft | Select two Optional | 2 - |
| 5 | 67320-93J00-000 67320-93J90-000 67320-93J10-000 67320-93JA0-000 67320-93J20-000 67320-93JB0-000 67320-93J30-000 67320-93JC0-000 67320-93J40-000 67320-93JD0-000 67320-93J50-000 67320-93J60-000 67320-93J70-000 67320-93J80-000 | REMOTE CONTROL CABLES | 2.4m / 8.0ft 2.7m / 9.0ft 3.1m / 10.0ft 3.4m / 11.0ft 3.7m / 12.0ft 4.0m / 13.0ft 4.2m / 14.0ft 4.6m / 15.0ft 4.8m / 16.0ft 5.2m / 17.0ft 5.4m / 18.0ft 6.1m / 20.0ft 6.7m / 22.0ft 7.3m / 24.0ft | Select four | 4 |

*Only needed if using 37100-98L00-000

COMPONENT PARTS

| | | | |
|---|---|---|---|
| 1 MAIN SWITCH PANEL VERTICAL | MAIN SWITCH PANEL HORIZONTAL | MAIN SWITCH PANEL | 2 EMERGENCY SWITCH PANEL |
|  |  |  |  |
| 37290-98L10-000 | 37290-98L20-000 | 37290-98L00-000 | 37803-98L00-000 |
| 3 BUZZER | 4 KEYLESS CONTROL UNIT | 5 KEY FOB | 6 KEYLESS CONTROL HARNESS |
|  |  |  |  |
| 38500-93J90-000 | 37171-98L02-000 433MHz | 37180-96L00-000 433MHz | 36623-98LA0-000 used when using 37290-98L00-000 |
| 7 KEYLESS RELAY ASSY | 8 KEYLESS PARTS HOLDER | 9 HOLDER | 10 CUSHION |
|  |  |  |  |
| 38860-96L01-000 | 37173-96L10-000 | 32980-38F00-000 | 32851-93J00-000 |

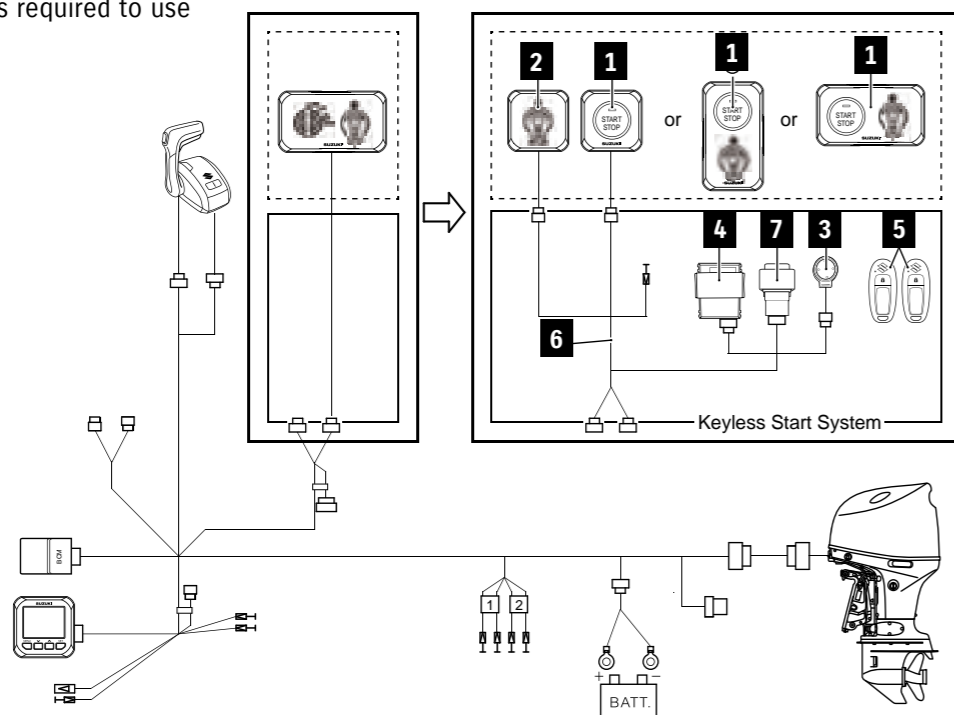
KEYLESS START SYSTEM



Start your engine effortlessly with a secure access code transmitted from the key fob. One-push Start/Stop enables you to control up to 6 engines, no ignition key required.

KEYLESS START SYSTEM for Suzuki Precision Control or Mechanical Remote Control with CAN Connection

*SMG4 is required to use



| | PART NUMBER | PART NAME | KIT | Total Required Quantity Per Boat |
|-----------|-----------------|------------------------------|-----------------|----------------------------------|
| | | | CONTROLLER SET | |
| | | | 37105-98L08-000 | |
| 1 | 37290-98L00-000 | MAIN SWITCH PANEL | - | 1 |
| | 37290-98L10-000 | MAIN SWITCH PANEL VERTICAL | - | 1 |
| | 37290-98L20-000 | MAIN SWITCH PANEL HORIZONTAL | - | 1 |
| 2 | 37803-98L00-000 | EMERGENCY SWITCH PANEL | - | 1* |
| 3 | 38500-93J90-000 | BUZZER | 1 | 1 |
| 4 | 37171-98L02-000 | KEYLESS CONTROL UNIT | 1 | 1 |
| 5 | 37180-96L00-000 | KEY FOB | 2 | 2 |
| 6 | 36623-98LA0-000 | KEYLESS CONTROL HARNESS | 1 | 1 |
| 7 | 38860-96L01-000 | RELAY ASSY, KLS | 1 | 1 |
| 8 | 37173-96L10-000 | HOLDER, KLS PARTS | 1 | 1 |
| 9 | 32980-38F00-000 | HOLDER | 1 | 1 |
| 10 | 32851-93J00-000 | CUSHION | 1 | 1 |
| - | 09407-14407-000 | CLAMP, KLS HARNESS | 1 | 1 |
| - | 37117-96L00-000 | DECAL, KLS | 2 | - |

*Used when using 37290-98L00-000.

DISPLAY MODE

DIGITAL TACHO & SPEED MODE



ANALOGUE SPEED MODE



*Night mode screen

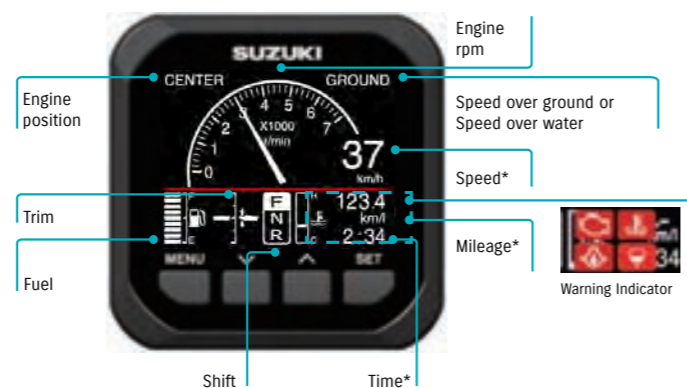
FUEL MODE



SUZUKI MULTI-FUNCTION GAUGE (SMG4)

The Suzuki Multi-function Gauge (SMG4) shows all the necessary information on one, user-friendly screen. Users can view a wide range of important information, including engine rpm, speed and trim angle, engine temp and fuel economy in and total fuel flow for multiple engine installations. The SMG4 also shows alerts from the engine's sensors and warning systems.

ANALOGUE TACHO & SPEED MODE



TACHO MODE



- Fuel flow (instantaneous)
- Mileage* (instantaneous and average)
- Trip time, Trip distance*
- Engine hour, Voltage, Water temp and more...

TROLL MODE FUNCTION



- Allows you to control your troll mode from the Multi-Function Gauge

This function is available from year 2019 models. Can only be used by models which are adapted to troll mode.

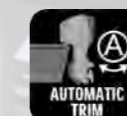
* Speed sensor or GPS module required.

| | GPS Module | Speed sensor |
|---------------|------------|--------------|
| Speed | ✓ | ✓ |
| Mileage | ✓ | ✓ |
| Trip distance | ✓ | ✓ |
| Time | ✓ | N/A |

FEATURE

MULTILINGUAL MENU

SMG4 is available in 13 languages: English, French, Italian, German, Spanish, Swedish, Norwegian, Finnish, Dutch, Portuguese, Danish, Russian, Japanese.



AUTOMATIC TRIM

Automatically adjusts trim angle with OBM RPM

Remark: Automatic Trim function are only available for DF100C and above.

DEMO MODE

Shows preinstalled data to demonstrate function of selected screen. (Ideal for boat shows and exhibitions)



1 GAUGE ASSY,
MULTI



34011-96L45-000

2 WIRE COMP,
EXTENSION



2-1 990C0-88104-000
0.6m / 1.9ft

2-2 990C0-88105-000
1.8m / 5.9ft

3 HARNESS ASSY,
NETWORK POWER



990C0-88112-000

4 CONNECTOR COMP,
BRANCH



990C0-88110-000

5 UNIT COMP,
RESISTOR FEMALE



990C0-88113-000

6 UNIT COMP,
RESISTOR MALE



990C0-88114-000

7 WIRE COMP,
GAUGE ADAPTER



7-1 36667-96L40-000

7-2 36667-96L50-000
for Tank 3-4

7-3 36667-96L11-000
for Mechanical
Control

8 SENSOR ASSY,
PADDLE WHEEL



990C0-88317-000

GPS RECEIVER
MODULE



990C0-88122-000

9 WIRE COMP, GAUGE EXT (0.6m)



36667-96L60-000
0.6 m / 1.9ft

10 ADAPTER COMP, GAUGE



36661-96L30-000
for Dual Engine

11 ADAPTER,
GAUGE FOR MULTI



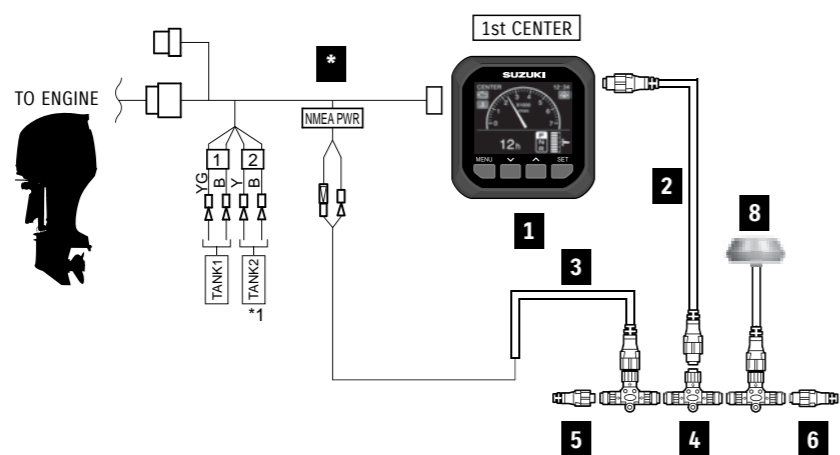
36665-87L10-000
In addition to component of
[MECHANICAL SINGLE]



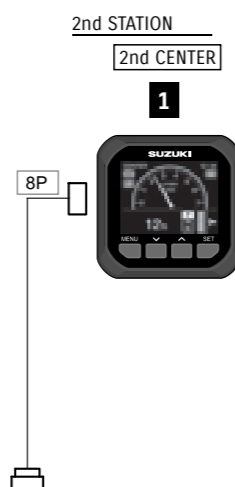
INSTALLATION DIAGRAM

SINGLE ENGINE with SPC or MECHANICAL CONTROL (CAN Connection)

SINGLE STATION



DUAL STATION (SPC ONLY)



TOTAL REQUIREMENT LIST

| PART NUMBER | PART NAME | LENGTH | Total Required Quantity | | | | | |
|-------------|---|-------------|-------------------------|-----------------------------------|------------------------------------|--|---------------------------------|----------------------------------|
| | | | SINGLE STATION | SINGLE STATION (Speed over water) | SINGLE STATION (Speed over ground) | DUAL STATION | DUAL STATION (Speed over water) | DUAL STATION (Speed over ground) |
| 1 | 34011-96L45-000 GAUGE ASSY, MULTI | - | 1 | 1 | 1 | 2 | 2 | 2 |
| - | 36001-88L00-000 CABLE KIT | - | - | 1 | 1 | - | 1 | 1 |
| 8 | 990C0-88317-000 SENSOR ASSY, PADDLE WHEEL | - | - | 1 | - | - | 1 | - |
| - | 990C0-88122-000 GPS RECEIVER MODULE | - | - | - | 1 | - | - | 1 |
| - | 33926-98L00-000 TERMINAL RESISTOR | - | 1 | 1 | 1 | - | - | - |
| *SPC | 36623-98L00-000 BCM HARNESS No.1 | - | 1 | 1 | 1 | 1 | 1 | 1 |
| | 36624-98L00-000 BCM HARNESS No.2 | - | - | - | - | 1 | 1 | 1 |
| *Mechanical | 36620-93JA0-000 MAIN WIRING HARNESS | 6.5m/21.3ft | 1 | 1 | 1 | Dual station is not applicable for Mechanical Control. | | |
| | 36620-93JB0-000 | 5.0m/16.4ft | | | | | | |
| | 36620-93JC0-000 | 8.0m/26.2ft | | | | | | |

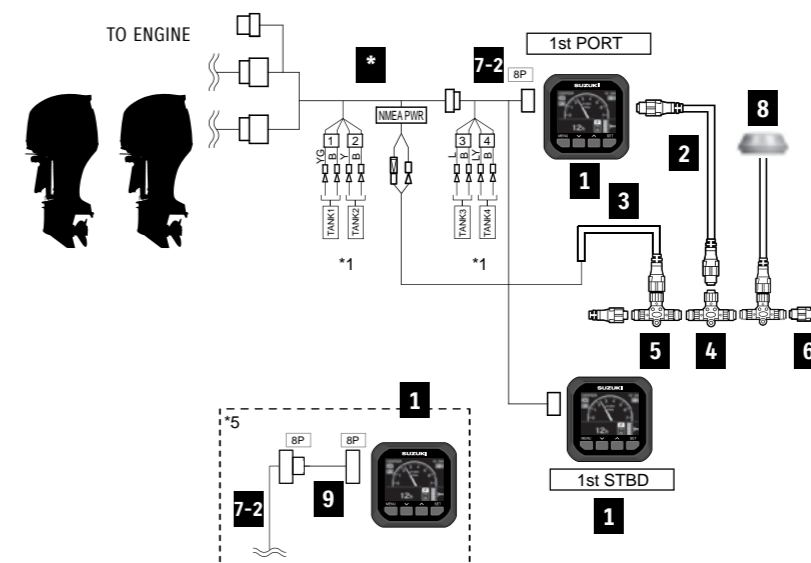
* BCM Harness No.1 & 2 ⇒ SPC See page 9.
Main Wiring Harness ⇒ Mechanical Control (CAN Connection). See page 19.

CABLE KIT COMPONENT

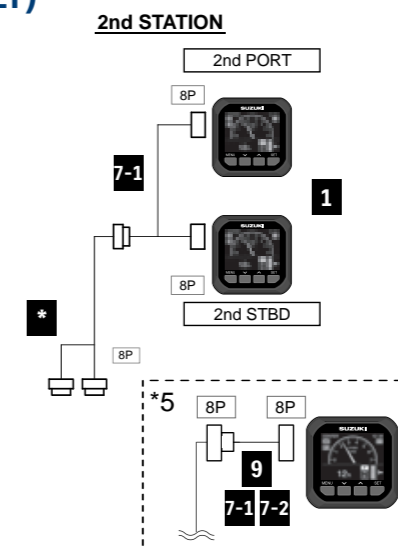
| PART NUMBER | PART NAME | LENGTH | Quantity |
|-----------------|---|--------|----------|
| 36001-88L00-000 | CABLE KIT | - | - |
| 2 | 990C0-88104-000 WIRE COMP, EXTENSION | 0.6m | 1 |
| 3 | 990C0-88112-000 HARNESS ASSY, NETWORK POWER | - | 1 |
| 4 | 990C0-88110-000 CONNECTOR COMP, BRANCH | - | 1 |
| 5 | 990C0-88113-000 UNIT COMP, RESISTOR FEMALE | - | 1 |
| 6 | 990C0-88114-000 UNIT COMP, RESISTOR MALE | - | 1 |

DUAL ENGINE with SPC or MECHANICAL CONTROL (CAN Connection)

SINGLE STATION (SPC ONLY)



DUAL STATION (SPC ONLY)

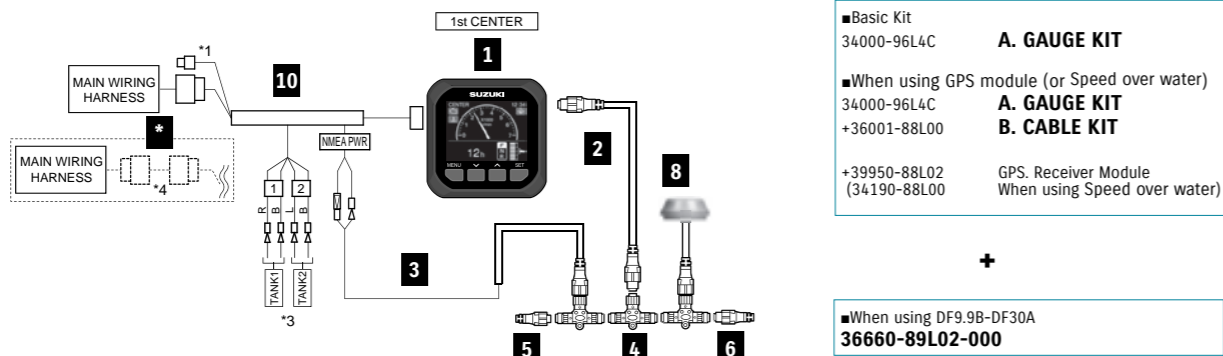


TOTAL REQUIREMENT LIST

| PART NUMBER | PART NAME | LENGTH | Total Required Quantity | | | | | |
|-------------|--|-------------|-------------------------|-----------------------------------|------------------------------------|--|---------------------------------|----------------------------------|
| | | | SINGLE STATION | SINGLE STATION (Speed over water) | SINGLE STATION (Speed over ground) | DUAL STATION | DUAL STATION (Speed over water) | DUAL STATION (Speed over ground) |
| 1 | 34011-96L45-000 GAUGE ASSY, MULTI | - | 2 | 2 | 2 | 4 | 4 | 4 |
| - | 36001-88L00-000 CABLE KIT | - | - | 1 | 1 | - | 1 | 1 |
| 8 | 990C0-88317-000 SENSOR ASSY, PADDLE WHEEL | - | - | 1 | - | - | 1 | - |
| - | 990C0-88122-000 GPS RECEIVER MODULE | - | - | - | 1 | - | - | 1 |
| 9 | 36667-96L60-000 WIRE COMP, GAUGE EXT | - | - | - | - | Optional | | |
| - | 33926-98L00-000 TERMINAL RESISTOR | - | 1 | 1 | 1 | - | - | - |
| *SPC | 36667-96L40-000 WIRE COMP, GAUGE ADAPTER | - | Select 1 | | | 2** | | |
| 7-1 | 36667-96L50-000 WIRE COMP, GAUGE ADAPTER (FOR TANK3-4) | - | Select 1 | | | 2** | | |
| 7-2 | 36623-98L30-000 BCM HARNESS No.1 | - | 1 | 1 | 1 | 1 | 1 | 1 |
| | 36624-98L10-000 BCM HARNESS No.2 | - | - | - | - | 1 | 1 | 1 |
| *Mechanical | 36620-93JA0-000 MAIN WIRING HARNESS | 6.5m/21.3ft | 2 | 2 | 2 | Dual station is not applicable for Mechanical Control. | | |
| | 36620-93JB0-000 | 5.0m/16.4ft | | | | | | |
| | 36620-93JC0-000 | 8.0m/26.2ft | | | | | | |
| | 36665-87L10-000 ADAPTER, GAUGE FOR MULTI | - | 1*** | 1*** | 1*** | | | |

* BCM Harness No.1 & 2 ⇒ SPC. See page 9.
Main Wiring Harness ⇒ Mechanical Control (CAN Connection). See page 19.
** 36667-96L40 x 1 + 36667-96L50 x 1 or 36667-96L40 x 2
*** Please refer to Rigging Manual for installation.

SINGLE ENGINE with MECHANICAL CONTROL (Non-CAN Connection)

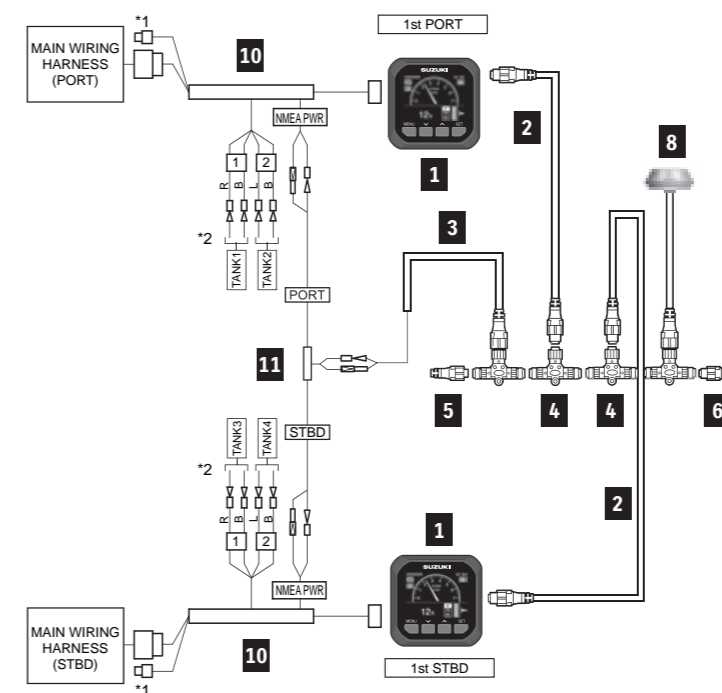


| For MECHANICAL CONTROL & SINGLE ENGINE | | | | KIT | | Total Required Quantity A (+ B) <> |
|--|-----------------|-----------------------------|---------------------------------|---------------------------------|-----|---------------------------------------|
| PART NUMBER | PART NAME | LENGTH | A. GAUGE KIT 34000-96L4C-000 | B. CABLE KIT 36001-88L00-000 | | |
| 1 | 34011-96L45-000 | GAUGE ASSY, MULTI | 1 | - | 1 | |
| 2-1 | 990C0-88104-000 | WIRE COMP, EXTENSION | - | 1 | (1) | |
| 2-2 | 990C0-88105-000 | WIRE COMP, EXTENSION | - | - | - | |
| 3 | 990C0-88112-000 | HARNESS ASSY, NETWORK POWER | - | 1 | (1) | |
| 4 | 990C0-88110-000 | CONNECTOR COMP, BRANCH | - | 1 | (1) | |
| 5 | 990C0-88113-000 | UNIT COMP, RESISTOR FEMALE | - | 1 | (1) | |
| 6 | 990C0-88114-000 | UNIT COMP, RESISTOR MALE | - | 1 | (1) | |
| 8 | 990C0-88317-000 | SENSOR ASSY, PADDLE WHEEL | - | - | (1) | |
| | 990C0-88122-000 | GPS RECEIVER MODULE | - | - | (1) | |
| 10 | 36661-96L30-000 | ADAPTER COMP, GAUGE | 1 | - | 1 | |
| * | 36660-89L02-000 | SET, ENG TO INTERFACE WIRE | - | - | <1> | |

■ *() parts are required when using GPS module or Speed sensor.
■ * < > part are required when using with DF9.9B to 30A.



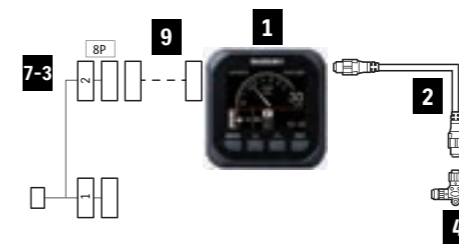
DUAL ENGINE with MECHANICAL CONTROL (Non-CAN Connection)



| For MECHANICAL CONTROL & DUAL ENGINE | | | | Total Required Quantity A (+ B) |
|--------------------------------------|-----------------|-----------------------------|------|------------------------------------|
| PART NUMBER | PART NAME | LENGTH | | |
| 1 | 34011-96L45-000 | GAUGE ASSY, MULTI | - | 2 |
| 2-1 | 990C0-88104-000 | WIRE COMP, EXTENSION | 0.6m | 2 |
| 2-2 | 990C0-88105-000 | WIRE COMP, EXTENSION | 1.8m | 2 |
| 3 | 990C0-88112-000 | HARNESS ASSY, NETWORK POWER | - | 1 |
| 4 | 990C0-88110-000 | CONNECTOR COMP, BRANCH | - | 2 |
| 5 | 990C0-88113-000 | UNIT COMP, RESISTOR FEMALE | - | 1 |
| 6 | 990C0-88114-000 | UNIT COMP, RESISTOR MALE | - | 1 |
| 8 | 990C0-88317-000 | SENSOR ASSY, PADDLE WHEEL | - | (1) |
| | 990C0-88122-000 | GPS RECEIVER MODULE | - | (1) |
| 10 | 36661-96L30-000 | ADAPTER COMP, GAUGE | - | 2 |
| 11 | 36665-87L10-000 | ADAPTER, GAUGE FOR MULTI | - | 1 |

■ *() parts are required when using GPS module or Speed sensor.

ADDITIONAL GAUGE COMPONENT (MECHANICAL)



| ADDITIONAL GAUGE COMPONENTS (MECHANICAL) | | | | Total Required Quantity |
|--|-----------------|-------------------------------|------|-------------------------|
| PART NUMBER | PART NAME | LENGTH | | |
| 1 | 34011-96L45-000 | GAUGE ASSY, MULTI | - | 1 |
| 2-1 | 990C0-88104-000 | WIRE COMP, EXTENSION | 0.6m | 1 |
| 2-2 | 990C0-88105-000 | WIRE COMP, EXTENSION | 1.8m | 1 |
| 4 | 990C0-88110-000 | CONNECTOR COMP, BRANCH | - | 1 |
| 7-3 | 36667-96L11-000 | WIRE COMP, DUAL GAUGE ADAPTER | - | 1 |
| 9 | 36667-96L60-000 | WIRE, GAUGE EXT | 0.6m | (1) |

Please use "36667-96L60-000 WIRE, GAUGE EXT" as an extension between "34011-96L45" and "36667-96L11"

ANALOGUE INSTRUMENT



SPEEDOMETER

*Each speedometer includes vinyl tube, hardware, and installation manual.



White



Black

(White)

(Black)

34100-93J13-000 **34100-93J02-000**

Gauge Size 4" (101.6mm)
Maximum Speed 130km/h, 80mph
Bourdon-tube type speedometer with readings in km/h and mph.



White



Black

(White)

(Black)

34100-93J33-000 **34100-93J22-000**

Gauge Size 4" (101.6mm)
Maximum Speed 80km/h, 50mph
Bourdon-tube type speedometer with readings in km/h and mph.

TACHOMETER



White



Black



White



Black



White



Black

34200-93J14-000 (White)

34200-93J02-000 (Black)

Gauge Size 4" (101.6mm)

Applicable Model DF25A-250

Caution system alert with a monitor lamp lighting on when an abnormal engine condition occurs. Refer to SERVICE MANUAL for the detail.

34200-93J54-000 (White)

34200-93J43-000 (Black)

Gauge Size 4" (101.6mm)

Applicable Model DF40A-250

Exclusive for SUZUKI Troll Mode System. Automatically switches to low RPM scale when the SUZUKI Troll Mode System is activated.

34200-93J34-000 (White)

34200-93J22-000 (Black)

Gauge Size 4" (101.6mm)

Applicable Model DF8A-30A

Full-scale 7000-RPM TACHOMETER can be used on electric-start models by using 4, 6 or 12 pole switch on rear of meter.

TRIM GAUGE



White



Black

34800-93J13-000 (White)

34800-93J02-000 (Black)

Gauge Size 2" (50.8mm)

Applicable Model DF25A-250

Magnetic-type gauge shows trim angle for optimum performance and efficiency.

FUEL GAUGE



White



Black

34300-93J14-000 (White)

34300-93J03-000 (Black)

Gauge Size 2" (50.8mm)

FUEL GAUGE alone works with the US Standard 240-30Ω sending unit.

HOUR METER



White



Black

34500-93J13-000 (White)

34500-93J02-000 (Black)

Gauge Size 2" (50.8mm)

Applicable Model DF9.9B-250

12-Volt-electric-motor driven meter.

SPEEDOMETER SENDER ASSY



34100-93J53-000 (White)

Gauge Size 4" (101.6mm)

Maximum Speed 80km/h, 40knots

Bourdon-tube type speedometer with readings in km/h and knots.



34190-95500-000



34190-87D00-000

VOLTMETER



White



Black

34600-93J13-000 (White)

34600-93J02-000 (Black)

Gauge Size 2" (50.8mm)

Applicable Model DF9.9B-250

WATER-PRESSURE GAUGE



White



Black

34650-93J33-000 (White)

34650-93J22-000 (Black)

Gauge Size 2" (50.8mm)

Applicable Model DF40A-250

Select an appropriate INSTALLATION KIT for each model.

INSTALLATION KIT for WATER-PRESSURE GAUGE



34660-90J04-000

Applicable Model DF40A-140B

34660-96J01-000

Applicable Model DF150A-200A

34660-93J02-000

Applicable Model DF200-250

STEERING



TILLER HANDLE KIT



63002-88L2A-YAY

Applicable Model
DF40A/50A

63002-88L18-YAY

Applicable Model
DF60A/50AV/60AV

63002-87L20-YAY

Applicable Model
DF70A-100B
(Year 2022~)

63002-99L00-YAY

Applicable Model
DF100C/115BT

MAIN FEATURE



Tachometer with warning indicators



Three-position angle adjustable bracket



Troll mode switch
- Activates SUZUKI Troll Mode System and controls RPM from idling engine speed up to 1200rpm at every 50rpm.



Power trim & tilt switch and throttle grip friction adjuster



DUAL-ENGINE TIE-BAR



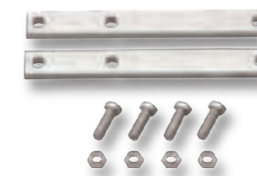
67600-99L00-000

Stainless steel
Applicable Model DF100C-140B

67600-93J00-000

Stainless steel
Applicable Model DF150A-200A/200-250

STEERING EXTENSION KIT



67630-93J00-000

for installation of DUAL-ENGINE TIE-BAR
(67600-93J00-000)
Applicable Model DF150A-200A/200-250

DRAG-LINK KIT *67700- includes Steering Cable Seal



67700-87L10-000

Applicable Model DF70A-100B
(Year 2022~)

67700-93J00-000

Applicable Model DF40A-60A/
200-250

67700-96J00-000

Applicable Model DF150A-200A

67701-87J11-000

Applicable Model DF40A-60A/
200-250

67701-87L10-000

Applicable Model DF70A-90A/100B
(Year 2022~)

67701-90J01-000

Applicable Model DF100C-140B

67701-96J00-000

Applicable Model DF150A-200A

67701-94L00-000

Applicable Model DF25A/30A

67701-99J02-000

Applicable Model DF8A-DF20A

STEERING-BRACKET ATTACHMENT



43755-87L00-000

Applicable Model DF70A-100B

43755-88L00-000

Applicable Model DF40A-60A

43755-94L00-000

Applicable Model DF25A-30A

43755-99J01-000

Applicable Model DF8A-20A

STEERING CABLE SEAL



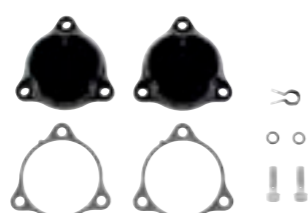
41161-94400-000

Applicable Model DF8A-250

STEERING CYLINDER CANCELLER KIT



43150-87MA0-QTN
Applicable Model
DF300BMD/350AMD



43150-87MA0-YAY
Applicable Model
DF300BMD/350AMD

STEERING ATTACHMENT KIT



43700-87M00-000
Applicable Model
DF300BMD/350AMD

STEERING STOPPER



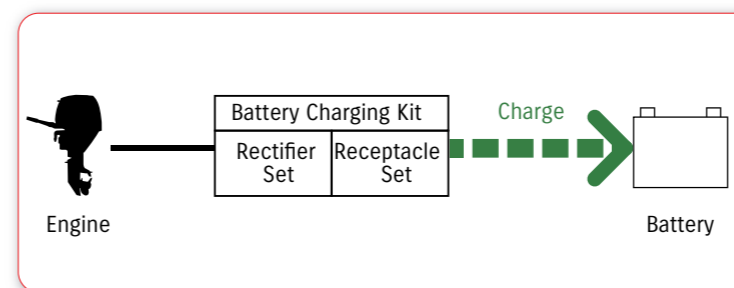
99000-81500-000
Applicable Model
DF300BMD/350AMD



ELECTRICAL PARTS

BATTERY CHARGING KIT

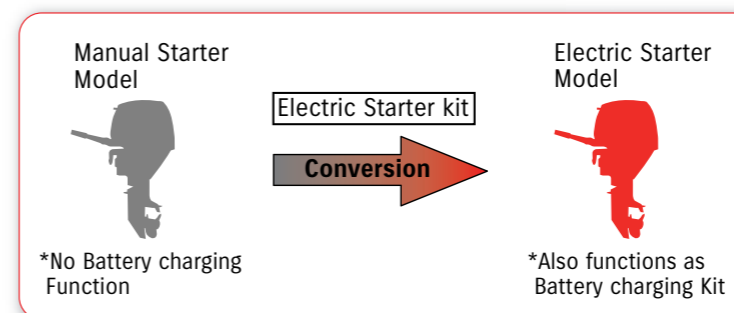
• Optional equipment for charging Battery



| APPLICABLE MODEL | DF4A/5A/6A | DF8A/9.9A | DF9.9B/15A/20A | DF25A/30A |
|-----------------------------|-----------------|-----------------|-----------------|-----------------|
| BATTERY CHARGING KIT | 32000-97L10-000 | 32000-99J03-000 | 32000-89L04-000 | 32000-94L03-000 |
| RECTIFIER and REGULATOR SET | 32801-97L01-000 | 32801-95J03-000 | 32801-89L02-000 | 32800-88L01-000 |
| RECEPTACLE KIT | 39600-97L10-000 | 39600-94J03-000 | 39600-89L02-000 | 39600-94L01-000 |
| BRACKET | | | | 32815-94L01-000 |
| BOLT | | | | 01550-06207-000 |

ELECTRIC STARTER KIT

* Electric Starter Kit functions as Battery charging Kit as well.



| APPLICABLE MODEL | DF8A/9.9A | DF25A/30A | DF9.9B | DF15A | DF20A |
|-----------------------|-----------------|-----------------|--|-----------------|--|
| ELECTRIC STARTER KIT | 31000-99J12-000 | 31000-94L10-000 | 31000-89L09-000 (~Year 2017) 31000-89L26-000 (Year 2018~) | | |
| ENGINE CONTROL MODULE | - | - | 33930-89LE0-000 | 33930-89LC0-000 | 33930-89L80-000 33930-89LA0-000 (P40) |

*When fitting to a non-Electric Starter model, please ensure to also replace the ECM with the ones shown here.

BATTERY ISOLATOR LEAD SET

Optional equipment for charging additional battery.



33830-98J11-000
Applicable Model DF150A-350A

FUEL SYSTEM

FUEL TANK

NOTE : These tanks do not meet US-EPA requirements.



65000-99100-000

12-liter plastic tank without fuel-level gauge

Applicable Model DF4A/5A/6A

65000-94L10-000

25-liter plastic tank with a fuel-level gauge

Applicable Model DF8A-140B

65000-89L10-000

12-liter plastic tank

Applicable Model DF4A-20A

REPLACEMENT FUEL CAP

NOTE : Not US-EPA compatible.

65520-99100-000

Applicable Model DF5A-20A/R

FUEL-HOSE SOCKET



65750-98506-000

Metal, Inner diameter: 11.2 mm

Applicable Model DF4A-20A/R



65750-87J11-000

Plastic, Inner diameter: 6.6 mm

Applicable Model DF4A/8A-30A



65750-95501-000

Metal, Inner diameter: 13.0 mm

Applicable Model DF8A/R-140B

FUEL CONNECTOR



65720-986L0-000

Engine side, Plastic

Applicable Model DF4A



65740-95D01-000

Tank side, Outer diameter: 13 mm, 1/4"NPT

Applicable Model DF8A/R-140B

SQUEEZE PUMP



65770-90J13-000

Large-in & Large-out

Applicable Model DF8A-20A/40A-140B

65770-93J13-000

Large-in & Large-out

Applicable Model DF150A-350A

SQUEEZE PUMP

(US-EPA compatible.)

65770-90J04-000

Large-in & Large-out

Applicable Model DF8A-140B

FUEL-HOSE

09352-73124-00D

I/D 7.3 , O/D 12.5

LENGTH 4,000mm

Not US-EPA compatible

FUEL-HOSE COMPONENT



65700-87J19-000

for 25-liter plastic tank to engine

Applicable Model DF8A-20A

65700-90J18-000

for 25-liter plastic tank to engine

Applicable Model DF40A-60A

65700-90J24-000

for 25-liter plastic tank to engine

Applicable Model DF70A-140B

65700-93J14-000

for fuel tank to engine

Applicable Model DF150A-350A

FUEL-HOSE COMPONENT

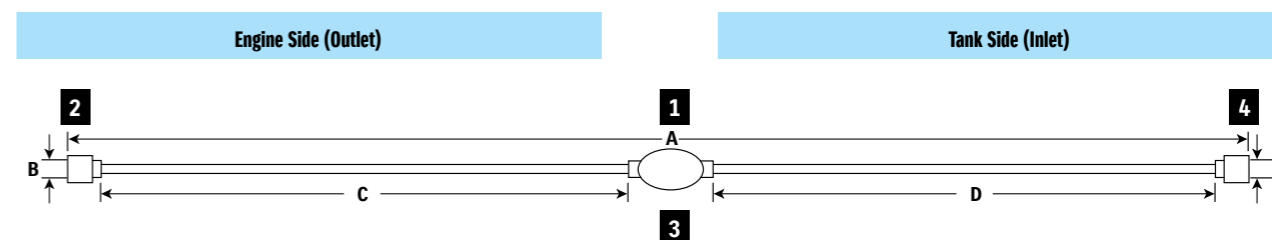
(US-EPA compatible.)

65700-87J28-000

Applicable Model DF5A-30A

65700-88L06-000

Applicable Model DF40A-60A



FUEL-HOSE COMPONENT Chart

| 1 | 2 | 3 | 4 |
|---------------------|------------------|--------------|------------------|
| FUEL-HOSE COMPONENT | FUEL-HOSE SOCKET | SQUEEZE PUMP | FUEL-HOSE SOCKET |
| | Metal | | Metal |
| | Plastic | | |

| 1 | 2 | | | - | | | 3 | - | | | 4 | | | |
|-----------------|---------------------|-------------|------------|-----------------|---------------|----------|----------|-----------------|---------------|----------|----------|----------|-------------|-----------------|
| | FUEL HOSE COMPONENT | SOCKET | | HOSE | | | | HOSE | | | SOCKET | | | |
| Part Number | A Length (mm) | Material | B I/D (mm) | Part Number | C Length (mm) | I/D (mm) | O/D (mm) | SQUEEZE PUMP | D Length (mm) | I/D (mm) | O/D (mm) | Material | E I/D (mm) | Part Number |
| 65700-87J19-000 | 1970 | Plastic | 6.6 | 65750-87J11-000 | 700 | 7.3 | 12.5 | 65770-90J13-000 | 1100 | 7.3 | 12.5 | Metal | 13.0 | 65750-95501-000 |
| 65700-90J18-000 | 1250 | (no socket) | - | - | (no hose) | - | - | 65770-90J13-000 | 1100 | 7.3 | 12.5 | Metal | 13.0 | 65750-95501-000 |
| 65700-90J24-000 | 1930 | (no socket) | - | - | 700 | 7.3 | 12.5 | 65770-90J13-000 | 1100 | 7.3 | 12.5 | Metal | 13.0 | 65750-95501-000 |
| 65700-93J14-000 | 3100 | (no socket) | - | - | 750 | 9.0 | 15.0 | 65770-93J13-000 | 2250 | Large | 9.0 | 15.0 | (no socket) | - |
| 65700-87J28-000 | 2000 | Plastic | 6.6 | 65750-87J11-000 | 700 | 7.3 | 12.5 | 65770-90J03-000 | 1100 | 7.3 | 12.5 | Metal | 13.0 | 65750-95501-000 |
| 65700-88L06-000 | 1280 | (no socket) | - | - | (no hose) | - | - | 65770-90J03-000 | 1100 | 7.3 | 12.5 | Metal | 13.0 | 65750-95501-000 |

WATER SEPARATOR / FUEL FILTER



65900-98J11-000

Applicable Model DF5A-DF140B

65900-98J21-000

Applicable Model DF150A-DF350A

WATER SEPARATOR/FUEL FILTER ELEMENT SET



65910-98J01-000

Applicable Model DF5A-DF350A

SUZUKI PROPELLERS

WATERGRIP WATERGRIP

WATERGRIP is a stainless-steel propeller series offering accurate response to User operation. Converting engine power into propulsion with high efficiency, this propeller series meets our customer's demand for bigger, faster, more powerful outboards. The WATERGRIP propeller series employs a new interchangeable and square shaped propellerbush that minimises power loss in delivery.

| Applicable Model | Material | Blade | Diameter | | Pitch | | Rotation* | Part number |
|---|-----------------|--------|-----------------|-----------------|-----------------|-----------------|-----------------|-----------------|
| | | | in | (mm) | in | (mm) | | |
| DF150/150AP, DF175/DF175AP, DF200/DF200AP, DF225, DF250/DF250AP, DF300AP | Stainless | 3 | 14 1/2 | (368.3) | 25 | (635.0) | RR | 58700-96J40-000 |
| | | | | | CR | 58800-96J40-000 | | |
| | | | | | 27 | (685.8) | RR | 58700-96J50-000 |
| | | | CR | 58800-96J50-000 | | | | |
| | | | 14 3/4 | (374.7) | 23 | (584.2) | RR | 58700-96J30-000 |
| | | | | | CR | 58800-96J30-000 | | |
| | | | 15 | (381.0) | 21 | (533.4) | RR | 58700-96J20-000 |
| | | | | | CR | 58800-96J20-000 | | |
| | | | 15 1/4 | (387.4) | 19 | (482.6) | RR | 58700-96J10-000 |
| | | | | | CR | 58800-96J10-000 | | |
| | | | 15 1/2 | (393.7) | 17 | (431.8) | RR | 58700-96J00-000 |
| | | | | | CR | 58800-96J00-000 | | |
| | | | 16 | (406.4) | 15 | (381.0) | RR | 58700-93L81-000 |
| | | | | | RR | 58700-93L01-000 | | |
| | | | | | CR | 58800-93L00-000 | | |
| | | 18 1/2 | | | (469.9) | RR | 58700-93L11-000 | |
| | | CR | | | 58800-93L10-000 | | | |
| | | 20 | | | (508.0) | RR | 58700-93L21-000 | |
| | | CR | | | 58800-93L20-000 | | | |
| | | 21 1/2 | | | (546.1) | RR | 58700-93L31-000 | |
| | | CR | | | 58800-93L30-000 | | | |
| | | 23 | | | (584.2) | RR | 58700-93L41-000 | |
| | | CR | | | 58800-93L40-000 | | | |
| | | 24 1/2 | | | (622.3) | RR | 58700-93L51-000 | |
| | | CR | 58800-93L50-000 | | | | | |
| | | 26 | (660.4) | RR | 58700-93L61-000 | | | |
| | | CR | 58800-93L60-000 | | | | | |
| | | 27 1/2 | (698.5) | RR | 58700-93L70-000 | | | |
| | | 4 | 15 1/4 | (387.4) | 18 | (457.2) | RR | 58700-93J00-000 |
| | | | | | RR | 58700-93J10-000 | | |
| CR | 58800-93J10-000 | | | | | | | |
| 22 | (558.8) | | | | RR | 58700-93J20-000 | | |
| CR | 58800-93J20-000 | | | | | | | |
| 24 | (609.6) | | | | RR | 58700-93J30-000 | | |
| CR | 58800-93J30-000 | | | | | | | |
| 26 | (660.4) | RR | 58700-93J40-000 | | | | | |
| CR | 58800-93J40-000 | | | | | | | |

*RR:Regular-Rotation model, CR:Counter-Rotation model

WATERGRIP DUAL WATERGRIP DUAL

Our flagship models, the DF350A, DF325A and DF300B, introduced the Suzuki Dual Prop System, an industry-leading technology, which delivers outstanding and exciting performance. The two contra-rotating propellers, operating simultaneously, enables greater conversion efficiency as well as better stability, grip, and manoeuvrability.



| Applicable Model | Material | Blade | Diameter | | Pitch | | Part number | |
|------------------------------|-----------|-----------------|-----------------|---------|--------|---------|-----------------|-----------------|
| | | | in | (mm) | in | (mm) | (Front) | (Rear) |
| DF300B, DF325A, DF350A | Stainless | 3 | 15 1/2 | (393.7) | 12 | (304.8) | 58500-98LA0-000 | 58600-98LA1-000 |
| | | | | | 15 | (381.0) | 58500-98LB0-000 | 58600-98LB1-000 |
| | | | | | 16 1/2 | (419.1) | 58500-98LC0-000 | 58600-98LC1-000 |
| | | | | | 18 | (457.2) | 58500-98L90-000 | 58600-98L91-000 |
| | | | | | 19 1/2 | (495.3) | 58500-98L60-000 | 58600-98L61-000 |
| | | | | | 21 | (533.4) | 58500-98L00-000 | 58600-98L01-000 |
| | | | | | 22 1/2 | (571.5) | 58500-98L10-000 | 58600-98L11-000 |
| | | | | | 24 | (609.6) | 58500-98L20-000 | 58600-98L21-000 |
| | | | | | 25 1/2 | (647.7) | 58500-98L30-000 | 58600-98L31-000 |
| | | | | | 27 | (685.8) | 58500-98L40-000 | 58600-98L41-000 |
| | | | | | 28 1/2 | (723.9) | 58500-98L50-000 | 58600-98L51-000 |
| | | | | | 30 | (762.0) | 58500-98L70-000 | 58600-98L71-000 |
| 31 1/2 | (800.1) | 58500-98L80-000 | 58600-98L81-000 | | | | | |

WATERGRIP SPORT WATERGRIP SPORT

The WATERGRIP SPORT propellers feature a high rake blade design for excellent acceleration and exceptional top speed. These propellers are ideal for lightweight sports boats as they give remarkably stable thrust when turning for superior manoeuvrability.



| Applicable Model | Material | Blade | Diameter | | Pitch | | Rotation* | Part number |
|---|-----------|-------|----------|---------|-------|---------|-----------|-----------------|
| | | | in | (mm) | in | (mm) | | |
| DF150/150AP, DF175/DF175AP, DF200/DF200AP, DF225, DF250/DF250AP, DF300AP | Stainless | 3 | 14 | (355.6) | 27 | (685.8) | RR | 58700-96L40-000 |
| | | | 14 1/4 | (362.0) | 25 | (635.0) | RR | 58700-96L30-000 |
| | | | 14 1/2 | (368.3) | 23 | (584.2) | RR | 58700-96L20-000 |
| | | | 14 7/8 | (377.8) | 21 | (533.4) | RR | 58700-96L10-000 |
| | | | 15 | (381.0) | 19 | (482.6) | RR | 58700-96L00-000 |

*RR:Regular-Rotation model, CR:Counter-Rotation model

The WATERGRIP propeller series employs a new interchangeable and square shaped propeller bush that minimizes power loss in delivery.

PROPELLER BUSH ADVANTAGES



Interchangeable bush with
Better resistance over propeller ship

PROPELLER LINE-UP

| Model | Material | Blade | Diameter | | Pitch | | Rotation* | Description | Part number | | |
|----------------------------|----------|-----------------|----------|---------|--------|-----------------|-----------|-------------|-----------------|-------|-----------------|
| | | | in | (mm) | in | (mm) | | | | | |
| DF2.5 | Aluminum | 3 | 7 3/8 | (187.3) | 5 3/8 | (136.5) | RR | | 58110-97JA0-019 | | |
| DF4A, DF5A, DF6A | Aluminum | 3 | 7 1/2 | (190.5) | 6 | (152.4) | RR | | 58110-91JL0-019 | | |
| | | | | | 6 1/2 | (165.1) | RR | | 58110-91JM0-019 | | |
| | | | | | 7 | (177.8) | RR | | 58110-91JN0-019 | | |
| DF8A, DF9.9A | Aluminum | 3 | 9 1/4 | (235.0) | 7 | (177.8) | RR | | 58100-89L00-019 | | |
| | | | | | 8 | (203.2) | RR | THICK | 58100-90L41-019 | | |
| | | | | | 9 | (228.6) | RR | | 58100-89L20-019 | | |
| | | | | | | | RR | THICK | 58100-90L50-019 | | |
| | | | | | 10 | (254.0) | RR | | 58100-89L60-019 | | |
| | | | | | | | RR | THICK | 58100-90L60-019 | | |
| | | | | | 11 | (279.4) | RR | | 58100-89L70-019 | | |
| DF9.9B, DF15A, DF20A | Aluminum | 3 | 9 1/4 | (235.0) | 7 | (177.8) | RR | | 58100-89L00-019 | | |
| | | | | | 8 | (203.2) | RR | THICK | 58100-90L41-019 | | |
| | | | | | 9 | (228.6) | RR | | 58100-89L20-019 | | |
| | | | | | | | RR | THICK | 58100-90L50-019 | | |
| | | | | | 10 | (254.0) | RR | | 58100-89L60-019 | | |
| | | | | | | | RR | THICK | 58100-90L60-019 | | |
| | | | | RR | | 58100-89L70-019 | | | | | |
| | | | | RR | | 58100-89L50-019 | | | | | |
| | | 4 | 10 | (254.0) | 5 | (127.0) | RR | High thrust | 58100-94JA2-019 | | |
| | | | | | 7 | (177.8) | RR | High thrust | 58100-94JB1-019 | | |
| | | DF25A, DF30A | Aluminum | 3 | 10 1/4 | (260.3) | 9 | (228.6) | RR | THICK | 58100-96372-YAY |
| | | | | | | | 10 | (254.0) | RR | | 58100-91L40-019 |
| | | | | | | | RR | THICK | 58100-96472-YAY | | |
| 11 | (279.4) | | | | | | RR | | 58100-91L50-019 | | |
| 12 | (304.8) | | | | | | RR | | 58100-91L20-019 | | |
| | | | | | | | RR | THICK | 58100-96482-YAY | | |
| 13 | (330.2) | | | | | | RR | | 58100-91L30-019 | | |
| | | | | | | | RR | THICK | 58100-96492-YAY | | |
| DF40A, DF50A, DF60A | Aluminum | 3 | 11 1/2 | (292.1) | 11 | (279.4) | RR | | 58100-88LF0-019 | | |
| | | | | | 11 1/8 | (282.6) | RR | | 58100-88LS0-019 | | |
| | | | | | 11 1/4 | (285.8) | RR | | 58100-88LR0-019 | | |
| | | | | | 11 3/8 | (288.9) | RR | | 58100-88LQ0-019 | | |
| | | | | | 9 | (228.6) | RR | | 58100-88LC0-019 | | |
| | | | | | 10 | (254.0) | RR | | 58100-88LD0-019 | | |
| | | | | | 11 | (279.4) | RR | | 58100-88LE0-019 | | |
| | | | | | 13 | (330.2) | RR | | 58100-88LB0-019 | | |
| | | | | | 11 5/8 | (295.3) | RR | | 58100-88LA0-019 | | |
| | | | | | 11 1/8 | (282.6) | RR | | 58200-88L30-000 | | |

*RR:Regular-Rotation model, CR:Counter-Rotation model

| Model | Material | Blade | Diameter | | Pitch | | Rotation* | Description | Part number | | |
|--------------------------------------|-----------|--------|----------|-----------------|---------|---------|-----------|-----------------|-----------------|--|-----------------|
| | | | in | (mm) | in | (mm) | | | | | |
| DF50AV, DF60AV | Aluminum | 3 | 13 3/4 | (349.3) | 12 | (304.8) | RR | | 58100-87LJ1-019 | | |
| | | | | | 17 | (431.8) | RR | | 58100-87LC1-019 | | |
| | | | 13 7/8 | (352.4) | 15 | (381.0) | RR | | 58100-87LB1-019 | | |
| | | | | | 9 | (228.6) | RR | | 58100-87LG1-019 | | |
| | | | 14 | (355.6) | 11 | (279.4) | RR | | 58100-87LH1-019 | | |
| | | | | | 13 | (330.2) | RR | | 58100-87LA1-019 | | |
| DF70A, DF80A, DF90A, DF100B | Aluminum | 3 | 13 1/2 | (342.9) | 15 | (381.0) | RR | | 58100-90JE0-019 | | |
| | | | | | 17 | (431.8) | RR | | 58100-87LC1-019 | | |
| | | | | | 19 | (482.6) | RR | | 58100-87LD1-019 | | |
| | | | 13 3/4 | (349.3) | 21 | (533.4) | RR | | 58100-87LE1-019 | | |
| | | | | | 23 | (584.2) | RR | | 58100-87LF1-019 | | |
| | | | | | 13 7/8 | (352.4) | 15 | (381.0) | RR | | 58100-87LB1-019 |
| | | | 14 | (355.6) | 13 | (330.2) | RR | | 58100-87LA1-019 | | |
| | | | | | 17 | (431.8) | RR | | 58100-90JA0-019 | | |
| | | | | | 19 | (482.6) | RR | | 58100-90JB0-019 | | |
| | | | | | 21 | (533.4) | RR | | 58100-90JC0-019 | | |
| | | | | | 23 | (584.2) | RR | | 58100-90JD0-019 | | |
| | | | | | 15 | (381.0) | RR | | 58200-92J40-000 | | |
| | Stainless | 3 | 13 7/8 | (352.4) | 17 | (431.8) | RR | | 58200-92J50-000 | | |
| | | | | | 19 | (482.6) | RR | | 58200-92J60-000 | | |
| | | | | | 21 | (533.4) | RR | | 58200-92J70-000 | | |
| | | | | | 23 | (584.2) | RR | | 58200-92J80-000 | | |
| | | | | | 25 | (635.0) | RR | | 58200-92J90-000 | | |
| | | | | | 13 1/2 | (342.9) | 15 | (381.0) | RR | | 58100-90JE0-019 |
| | | | | | 14 | (355.6) | 17 | (431.8) | RR | | 58100-90JA0-019 |
| | | | | | | | 19 | (482.6) | RR | | 58100-90JB0-019 |
| | | | | | | | 21 | (533.4) | RR | | 58100-90JC0-019 |
| 23 | (584.2) | RR | | 58100-90JD0-019 | | | | | | | |
| 15 | (381.0) | RR | | 58200-92J40-000 | | | | | | | |
| Stainless | 3 | 13 7/8 | (352.4) | 17 | (431.8) | RR | | 58200-92J50-000 | | | |
| | | | | | | CR | | 58200-92JA0-000 | | | |
| | | | | 19 | (482.6) | RR | | 58200-92J60-000 | | | |
| | | | | | | CR | | 58200-92JB0-000 | | | |
| | | | | 21 | (533.4) | RR | | 58200-92J70-000 | | | |
| | | | | | | CR | | 58200-92JC0-000 | | | |
| 23 | (584.2) | RR | | 58200-92J80-000 | | | | | | | |
| | | CR | | 58200-92JD0-000 | | | | | | | |
| 25 | (635.0) | RR | | 58200-92J90-000 | | | | | | | |

*RR:Regular-Rotation model, CR:Counter-Rotation model

HARDWARE for PROPELLER

| Applicable Model | STOPPER | PROPELLER BUSH | HARDWARE KIT | | | | | |
|------------------------------|-----------------|-----------------|-----------------|-----------------|-----------------|-----------------|-----------------|-----------------|
| | | | SPACER | WASHER | STOPPER | NUT | COTTER PIN | |
| DF2.5 | 57635-91JL0-000 | 58120-97JA0-000 | N/A | - | - | - | 58130-91JL0-000 | 09204-03003-000 |
| DF4A/5A/6A | 57635-97L00-000 | 58120-91JL0-000 | N/A | - | - | - | 58130-91JL0-000 | 09204-03003-000 |
| DF8A/9.9A | 57632-94J00-000 | 58120-89L00-000 | N/A | - | 09160-12066-000 | - | 09141-12005-000 | 09204-02004-000 |
| DF9.9B/15A/20A | 57632-94J00-000 | 58120-89L00-000 | N/A | - | 09160-12066-000 | - | 09141-12005-000 | 09204-02004-000 |
| DF25A/30A | 57632-91L00-000 | 58120-96401-000 | 57630-96300-000 | 57633-96300-000 | 09160-14028-000 | - | 09141-14008-000 | 09204-03003-000 |
| DF40A/50A/60A | 57632-95320-000 | 58120-88L01-000 | 57630-94301-000 | 57633-94301-000 | 09160-18028-000 | - | 09141-18005-000 | 09204-03003-000 |
| DF50AV/60AV | 57635-90J01-000 | 58105-90J00-000 | 57630-90J10-000 | 57633-90J10-000 | 09160-18028-000 | - | 09141-18005-000 | 09204-03003-000 |
| DF70A/80A/90A/100B | 57632-87L01-000 | 58105-90J00-000 | 57630-90J10-000 | 57633-90J10-000 | 09160-18028-000 | - | 09141-18005-000 | 09204-03003-000 |
| DF100C/115B/115BG/140B/140BG | 57635-92J10-000 | 58105-90J00-000 | 57630-90J10-000 | 57633-90J10-000 | 09160-18028-000 | - | 09141-18005-000 | 09204-03003-000 |
| DF150A-300AP | 57632-93L11-000 | 58120-93L00-000 | 57630-93L00-000 | 57633-93L00-000 | 09160-18028-000 | - | 09141-18005-000 | 09204-03003-000 |
| DF300B/DF325A/350A Front | 58531-98L00-000 | 58520-98L00-000 | 58540-98L01-000 | 58541-98L00-000 | - | 58551-98L00-000 | 58561-98L01-000 | - |
| DF300B/DF325A/350A Rear | 58631-98L00-000 | 58620-98L00-000 | 58640-98L10-000 | 58641-98L00-000 | 09160-18019-000 | - | 09141-18005-000 | 09204-03003-000 |



CHOOSING THE RIGHT PROPELLER

Propeller selection is very important in the performance of the boat. Acceleration, speed, fuel efficiency, stability and engine RPM all are affected by the propeller. Operating requirements and conditions will also determine which design, style and pitch of the propeller your customer can choose. The combination of boat, engine and appropriate propeller size may have already been tested by the boat manufacturer. **Your Customer may need your assistance to determine the correct propeller for their application.**

STAINLESS STEEL PROPELLERS

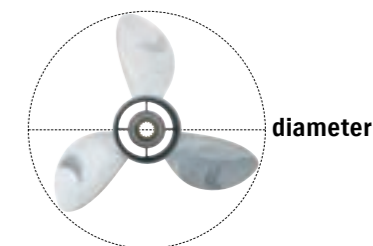
Suzuki Stainless Steel Propellers offer high performance and durability. Their aggressive design enhances the overall performance of the boat and the durability of stainless steel ensures long term dependability. Suzuki Stainless Steel propellers are also fitted with a rubber cushion hub to help absorb vibration and shock should they strike a foreign object.

PROPELLER SIZING

When referring to propeller size, the first number is the number of blades, the second number details the **diameter** of the propeller, and the third number is the **pitch**.
Example: **3 x 13 x 18** = 3 blades x Diameter: 13 inches x Pitch: 18 inches.
The pitch is the most significant factor when choosing a propeller.

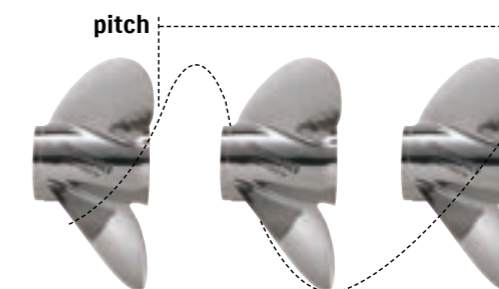
DIAMETER

Diameter is the distance across an imaginary circle that is made when a propeller rotates. Diameter is determined during the designing process of a propeller and is usually based on engine size, gear case design, horsepower and speed.



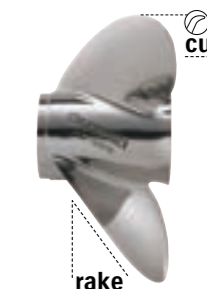
PITCH

Pitch is the theoretical distance that a propeller corkscrews forward through the water. In theory, an 18" (457.2mm) pitch propeller would travel 18" (457.2mm) with each complete revolution*. Lower pitches accelerate faster, but have lower top end speed. Higher pitches have a slower acceleration, but attain higher top speeds. An inch of pitch is generally equal to 150-200 engine RPM at wide open throttle (WOT). If pitch increases by an inch, RPM will decrease by 150-200 RPM at WOT. If pitch decreases by an inch, RPM will increase by 150-200 RPM at WOT.
*Note during actual operation, this number will be affected by slip factors such as water conditions, boat weight, propeller style, etc.



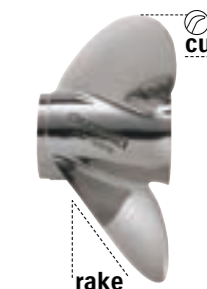
PROPELLER CUP

Cup is the curve along the trailing edge of the propeller blade. This reduces propeller slip and ventilation, allowing users to operate their engine at a higher transom mounting, and use more trim for bow lift.



RAKE

Rake is the angle, in degrees, that the propeller blades are mounted to the barrel of the propeller. Blades of a zero degree rake propeller are mounted perpendicular to the barrel. High rake propellers have blades that angle more to the rear of the propeller. These blades hold water longer and ventilate less at higher engine heights. Such propellers produce higher thrust which helps lift the bow of the boat more effectively.



MAINTAINING YOUR SUZUKI



CARE & MAINTENANCE ITEM



ECSTAR V7000 SEMI-SYNTHETIC MARINE ENGINE OIL



- Help to protect engines in severe conditions.
- Contribute to improve engine response.
- Viscosity index improvers help engine start easily.
- Advanced detergents keep engine parts clean.
- Special additives help protect engine in both salt and fresh water environments.

| Typical Properties | | Sales Unit | Part Number |
|---------------------|----------------|------------|-----------------|
| SAE viscosity grade | 10W-40 | 12x1L | 990F0-22B31-001 |
| Oil grade | Semi-Synthetic | 4x4L | 990F0-22B31-004 |
| Quality | FC-W | 1x60L | 990F0-22B31-060 |
| | | 1x208L | 990F0-22B31-208 |

ECSTAR MARINE GEAR OIL



ECSTAR MARINE GEAR OIL SAE 90 GL-5

| | |
|------------|-----------------------|
| Volume | > 1 L/60 L |
| Container | > plastic bottle/drum |
| Sales Unit | |
| 12 x 1 L | 990F0-22B33-001 |
| 1x 60 L | 990F0-22B33-060 |



ECSTAR MARINE GEAR OIL PUMP

Designed for 1 l ECSTAR gear oil bottle with hose and connector suitable for Suzuki outboard engines.

| | |
|------------|-----------------|
| Sales Unit | 1pc |
| | 990C0-99002-000 |

PAINT SPRAY



990F0-41005-CLR
CLEAR COAT

990F0-41005-YAY
PEARL NEBULAR BLACK

990F0-41005-0ED
CALIFORNIA GREY METALLIC

990F0-41005-Y5S
WHITE

990F0-41005-0EP
SHADOW BLACK METALLIC

990F0-41005-QTN
NEW WHITE

GREASE



99000-25520-000
WATER RESISTANT GREASE EP2
250 grams (8.8 oz)

Replacement Guideline (Engine oil & Gear oil)

| Interval | 1st time | 20 hours or 1 month* |
|----------|---------------|----------------------|
| | From 2nd time | 100 hours or 1 year* |

*Whichever comes first.

This guideline may vary by outboard model, condition of use, region, etc.

OTHER ITEMS

SUZUKI MARINE by MOTUL (Suzuki Approved)



4-STROKE ENGINE OIL
SAE 10W-30 Semi-Synthetic,FC-W
12x1L 99000-22B59-4T1
4x5L 99000-22B59-4T5



4-STROKE ENGINE OIL
SAE 10W-40 Semi-Synthetic,FC-W
12x1L 99000-22B60-4T1
4x5L 99000-22B60-4T5
60L 99000-22B60-4T6
208L 99000-22B60-4T8



MARINE GEAR OIL
SAE 90 GL-5
12x1L 99000-22B61-001



MARINE GEAR OIL
SAE 90, GL-5
24x0.35L 99000-22B61-P35

TOUCH-UP PAINT

99000-10203-0EP
SHADOW BLACK METALLIC (set)

99000-10203-YAY
PEARL NEBULAR BLACK (set)

99000-10202-Y5S
WHITE (single)

990F0-10202-QTN
NEW WHITE

LIQUID GASKET



99000-31140-THR
1207B (BLACK)
100 grams (3.5 oz)

THREAD LOCK



99000-32130-000
1360 (RED)
50 grams (1.7 oz)

GREASE



SHELL GADUS S2 V100 3*
plastic cartridge
For AT, BE, CH, DE, FR, UK, IE, IT, LU, NL, RO
1 x 400g 990F0-25011-GER
For CZ, DK, EE, FI, UK, HU, LT, LV, NO, PL, SE, SK
1 x 400g 990F0-25011-002
For BA, BG, ES, HR, IT, PT, RO, RS, SI, TR
1 x 400g 990F0-25011-003
*Replacement for Super Grease A
99000-25011-000/99000-25480-000

FLUSH-HOSE ATTACHMENT



55181-95200-000
Applicable Model DF4A-6A/40A-60A



17917-87L00-000
Applicable Model DF8A-350A

FLUSHING TOOL



99000-81202-000
Applicable Model DF300B/325A/350A
(~Year 2022)

99000-81211-000
Applicable Model DF300B/325A/350A
(Year 2023~)

99000-81220-000
Applicable Model DF250S (Year 2023~)
DF250AUN

ZINC ANODE for saltwater



55300-95500-000
Applicable Model DF8A/9.9A/40A-60A



55125-96310-000
Applicable Model DF25/R/Q



55321-90J01-000
Applicable Model DF50AV/60AV/
100C-140B

ALUMINUM ANODE for brackish water, saltwater



55321-87J01-000
Applicable Model DF2.5-350A



55320-94900-000
Applicable Model DF60A-350A



55321-95J00-000
Applicable Model DF2.5, DF4A-6A
55321-93J01-000
Applicable Model DF70A-90A/
100B/150-350A

MAGNESIUM ANODE for freshwater



55321-87J11-000
Applicable Model DF4A-350A



55321-94910-000
Applicable Model DF70A-350A

ANODE BULK PACK

55321-87810-B50
Applicable Model DF2.5-350A
55321-87J01 x 50pcs in one package

ENGINE COVER



99000-81700-000
Applicable Model DF8A-20A

99000-81710-000
Applicable Model DF25-60A

99000-81720-000
Applicable Model DF70A-100B

99000-81730-000
Applicable Model DF100C-140B,
DF200-250

99000-81740-000
Applicable Model DF150A-200A

99000-81750-000
Applicable Model DF300B-350A

MAINTENANCE KIT

SUZUKI highly recommends you to replace your outboard motor with Maintenance Kits every 100 hours or 1 year, whichever comes first.



You can also check the components for Maintenance Kits at Suzuki Ultimate Rigging Selector (in PDF section): <https://www.globalsuzuki.com/marine/SuzukiUltimateRiggingSelector/>



LINEUP For 4 STROKE OBM

| MODEL YEAR | KIT PART NUMBER | PART NUMBER | PART NAME | QTY |
|--------------------------------------|-----------------|-----------------|-------------------------|-----|
| DF2/2.5 ('12-) | 16500-97J00 | 09168-10022-000 | GASKET(10X17X1.5) | 1 |
| | | 09202-02006-000 | PIN(2.9X14) | 1 |
| | | 09204-03003-000 | PIN | 1 |
| | | 09280-33005-000 | O RING(D:1.9, ID:32.7) | 1 |
| | | 09482-00406-000 | PLUG, SPARK(CRGHSA) | 1 |
| | | 17461-97J00-000 | IMPELLER, WATER PUMP | 1 |
| | | 17471-97J00-000 | PANEL, PUMP CASE UNDER | 1 |
| | | 17472-97J00-000 | GASKET, PUMP CASE PANEL | 1 |
| | | 55321-87J01-000 | ANODE, PROTECTION | 1 |
| | | 59178-97J00-000 | GASKET, DRAIN PLUG | 2 |
| DF4A/5A/6A P01 DF4A/6A P03 ('17-) | 16500-97L00 | 17400-986L2-000 | KIT, WATER PUMP REPAIR | 1 |
| | | 09168-12017-000 | GASKET(12X17X1) | 1 |
| | | 09204-03003-000 | PIN | 1 |
| | | 09280-39002-000 | O RING(D:2, ID:38.5) | 1 |
| | | 09482-00L04-000 | PLUG, SPARK(CPR6EA-9) | 1 |
| | | 16510-16H11-000 | FILTER, ENGINE OIL | 1 |
| | | 44330-13H00-000 | FILTER, FUEL | 1 |
| | | 55321-87J01-000 | ANODE, PROTECTION | 1 |
| | | 55321-95J00-000 | ANODE, PROTECTION | 1 |
| | | 59178-97J00-000 | GASKET, DRAIN PLUG | 2 |
| DF8A/9.9A ('10-) | 16500-99J00 | 17400-99J20-000 | KIT, WATER PUMP REPAIR | 1 |
| | | 09168-12017-000 | GASKET(12X17X1) | 1 |
| | | 09204-02004-000 | PIN | 1 |
| | | 09280-13004-000 | O RING(D:1.9, ID:13) | 1 |
| | | 09280-22019-000 | O RING(D:1.9, ID:21.8) | 1 |
| | | 09280-54001-000 | O RING(D:2.4, ID:52.6) | 1 |
| | | 09482-00528-000 | PLUG, SPARK(CR6E) | 2 |
| | | 15410-98500-000 | FILTER, FUEL | 1 |
| | | 16510-45H10-000 | FILTER ASSY, ENG OIL | 1 |
| | | 55321-87J01-000 | ANODE, PROTECTION | 2 |
| DF9.9B/15A/20A ('13-) | 16500-89L00 | 17400-99J20-000 | KIT, WATER PUMP REPAIR | 1 |
| | | 09168-12017-000 | GASKET(12X17X1) | 1 |
| | | 09204-02004-000 | PIN | 1 |
| | | 09280-13004-000 | O RING(D:1.9, ID:13) | 1 |
| | | 09280-22019-000 | O RING(D:1.9, ID:21.8) | 1 |
| | | 09280-54001-000 | O RING(D:2.4, ID:52.6) | 1 |
| | | 09482-00661-000 | PLUG, SPARK(MR6K-9) | 2 |
| | | 15410-87L00-000 | FILTER, FUEL | 1 |
| | | 16510-45H10-000 | FILTER ASSY, ENG OIL | 1 |
| | | 55321-87J01-000 | ANODE, PROTECTION | 2 |

| MODEL YEAR | KIT PART NUMBER | PART NUMBER | PART NAME | QTY |
|-------------------------------|-----------------|-----------------|--------------------------|-----|
| DF25A/30A ('15-) | 16500-94L00 | 17400-94L21-000 | KIT, WATER PUMP REPAIR | 1 |
| | | 09168-12017-000 | GASKET(12X17X1) | 1 |
| | | 09204-03003-000 | PIN | 1 |
| | | 09280-22019-000 | O RING(D:1.9, ID:21.8) | 1 |
| | | 09482-00661-000 | PLUG, SPARK(MR6K-9) | 3 |
| | | 15410-87L00-000 | FILTER, FUEL | 1 |
| | | 16510-87J02-000 | FILTER ASSY, OIL | 1 |
| | | 55321-87J01-000 | ANODE, PROTECTION | 5 |
| | | 59178-97J00-000 | GASKET, DRAIN PLUG | 2 |
| | | 17400-88L01-000 | KIT, WATER PUMP REPAIR | 1 |
| DF40A/50A/60A ('10-) | 16500-88L00 | 09168-10022-000 | GASKET(10X17X1.5) | 2 |
| | | 09168-12012-000 | GASKET(12.5X20X2.5) | 1 |
| | | 09204-03003-000 | PIN | 1 |
| | | 09280-22019-000 | O RING(D:1.9, ID:21.8) | 2 |
| | | 09482-00446-000 | PLUG, SPARK(NGK DCPR6E) | 3 |
| | | 15410-88L00-000 | FILTER, FUEL | 1 |
| | | 16510-87J02-000 | FILTER ASSY, OIL | 1 |
| | | 55321-87J01-000 | ANODE, PROTECTION | 3 |
| | | 17400-99E12-000 | KIT, WATER PUMP REPAIR | 1 |
| | | 09168-10022-000 | GASKET(10X17X1.5) | 2 |
| DF50AV/60AV ('14-) | 16500-88L10 | 09168-12012-000 | GASKET(12.5X20X2.5) | 1 |
| | | 09204-03003-000 | PIN | 1 |
| | | 09280-22019-000 | O RING(D:1.9, ID:21.8) | 2 |
| | | 09482-00446-000 | PLUG, SPARK(NGK DCPR6E) | 3 |
| | | 15410-88L00-000 | FILTER, FUEL | 1 |
| | | 16510-87J02-000 | FILTER ASSY, OIL | 1 |
| | | 55321-87J01-000 | ANODE, PROTECTION | 3 |
| | | 17400-87L04-000 | KIT, WATER PUMP REPAIR | 1 |
| | | 09168-10038-000 | GASKET, DRAIN PLUG | 2 |
| | | 09168-12012-000 | GASKET(12.5X20X2.5) | 1 |
| DF70A-90A ('21MY-), DF100B | 16500-87L00 | 09204-03003-000 | PIN | 1 |
| | | 09280-22019-000 | O RING(D:1.9, ID:21.8) | 3 |
| | | 09482-00446-000 | PLUG, SPARK(NGK DCPR6E) | 4 |
| | | 15412-92J10-000 | FILTER, FUEL | 1 |
| | | 16510-61A33-000 | FILTER ASSY, OIL WAKO | 1 |
| | | 55321-87J01-000 | ANODE, PROTECTION | 3 |
| | | 17400-92J23-000 | KIT, WATER PUMP REPAIR | 1 |
| | | 11265-87E10-000 | GASKET, PROTECTION COVER | 2 |
| | | 15412-92J00-000 | FILTER, FUEL | 1 |
| | | 16510-61A33-000 | FILTER ASSY, OIL WAKO | 1 |
| DF100C-140B(G) | 16500-99L00 | 55321-87J01-000 | ANODE, PROTECTION | 5 |
| | | 09168-10022-000 | GASKET(10X17X1.5) | 2 |
| | | 09168-12012-000 | GASKET(12.5X20X2.5) | 1 |
| | | 09204-03003-000 | PIN | 1 |
| | | 09280-22019-000 | O RING(D:1.9, ID:21.8) | 3 |
| | | 09482-00649-000 | PLUG, SPARK(LKR6E) | 4 |

| MODEL YEAR | KIT PART NUMBER | PART NUMBER | PART NAME | QTY |
|---------------------------------------|------------------------------|-----------------|----------------------------|-----|
| DF200A(P)/ 175AP/150AP ('15-) | 16500-96L00 | 17400-96J04-000 | KIT, WATER PUMP REPAIR | 1 |
| | | 09168-10038-000 | GASKET, DRAIN PLUG | 2 |
| | | 09168-12012-000 | GASKET(12.5X20X2.5) | 1 |
| | | 09204-03003-000 | PIN | 1 |
| | | 09280-22019-000 | O RING(D:1.9, ID:21.8) | 5 |
| | | 09482-00649-000 | PLUG, SPARK(LKR6E) | 4 |
| | | 15412-92J00-000 | FILTER, FUEL | 1 |
| | | 16510-96J11-000 | FILTER ASSY, OIL | 1 |
| | | 55321-87J01-000 | ANODE, PROTECTION | 6 |
| | | 17400-93J06-000 | KIT, WATER PUMP REPAIR | 1 |
| DF200(2Z)/ 250 ('11-) | 16500-93J02 | 09168-10038-000 | GASKET, DRAIN PLUG | 2 |
| | | 09168-12012-000 | GASKET(12.5X20X2.5) | 1 |
| | | 09204-03003-000 | PIN | 1 |
| | | 09280-22019-000 | O RING(D:1.9, ID:21.8) | 7 |
| | | 09482-00427-000 | PLUG, SPARK(NGK, BKR6E) | 6 |
| | | 15412-93J10-000 | FILTER ASSY, FUEL | 1 |
| | | 16510-96J11-000 | FILTER ASSY, OIL | 1 |
| | | 55320-94910-000 | ANODE SET, CLAMP BRACKET | 1 |
| | | 55321-87J01-000 | ANODE, PROTECTION | 7 |
| | | 17400-98J06-000 | KIT, WATER PUMP REPAIR | 1 |
| DF250A/ 300A/ 250S ('11-) | 16500-98J03 | 09168-10038-000 | GASKET, DRAIN PLUG | 2 |
| | | 09168-12012-000 | GASKET(12.5X20X2.5) | 1 |
| | | 09204-03003-000 | PIN | 1 |
| | | 09280-22019-000 | O RING(D:1.9, ID:21.8) | 7 |
| | | 09482-00427-000 | PLUG, SPARK(NGK, BKR6E) | 6 |
| | | 15412-93J10-000 | FILTER ASSY, FUEL | 1 |
| | | 16510-96J11-000 | FILTER ASSY, OIL | 1 |
| | | 55320-94910-000 | ANODE SET, CLAMP BRACKET | 1 |
| | | 55321-87J01-000 | ANODE, PROTECTION | 8 |
| | | 17400-87M01-000 | KIT, WATER PUMP REPAIR | 1 |
| DF350A/ 325A/ 300B ('23-) MD | 16500-87M02 | 09168-10038-000 | GASKET, DRAIN PLUG | 3 |
| | | 09168-12012-000 | GASKET(12.5X20X2.5) | 1 |
| | | 09204-03003-000 | PIN | 1 |
| | | 09280-22019-000 | O RING(D:1.9, ID:21.8) | 7 |
| | | 09482-00642-000 | PLUG, SPARK(NGK, ILZKR7D8) | 6 |
| | | 15412-93J10-000 | FILTER ASSY, FUEL | 1 |
| | | 16510-96J11-000 | FILTER ASSY, OIL | 1 |
| | | 55320-94910-000 | ANODE SET, CLAMP BRACKET | 1 |
| | | 55321-87J01-000 | ANODE, PROTECTION | 8 |
| | | 55321-93J50-000 | ANODE, PROTECTION | 4 |
| 58551-98L00-000 | STOPPER, FRONT PROPELLER NUT | 1 | | |

The following maintenance kits are also available.

| MODEL YEAR | KIT PART NUMBER |
|---------------------------|-----------------|
| DF2/2.5 ('06-'11) | 17400-97820 |
| DF4/5/6 ('02-'10) | 17400-91860 |
| DF4/5/6 ('11-) | 17400-91830 |
| DF9.9/15 ('11-'13) | 17400-94810 |
| DF20/25 V2 ('06-) | 17400-95873 |
| DF25/30 ('01-'10) | 17400-89823 |
| DF40/50 ('06LATE-'10) | 17400-87823 |
| DF60 ('09LATE-'09END) | 17400-99853 |
| DF60/70 ('07) | 17400-99872 |
| DF60/70 ('08-'09EARLY) | 17400-99862 |
| DF70A/80A/90A ('09-'20MY) | 17400-87814 |
| DF100/115 ('10-'12) | 17400-92843 |
| DF100A/115A/140A ('13-) | 17400-92824 |
| DF140 ('10-'12) | 17400-92853 |
| DF150/175 ('06-) | 17400-96825 |
| DF325A/350A ('18-'22) | 17400-98876 |



FURUNO FishHunter™ Drive

FishHunter™ Drive delivers all-new control features for boaters utilizing Suzuki outboard models driven by the Furuno NAVpilot-300 Autopilot. These new features offer enhanced autopilot controls for precise navigation of routes and advanced fishing features for anglers while jigging, or trolling.

Applicable Models: ALL SPC models*1
(DF350AMD/300BMD*2, DF350A/325A/300B, DF300AP/250AP, DF250AUN, DF200AP/175AP/150AP, DF140BG/115BG)
*1 Gateway is required.
*2 Point Lock™ function is not available.



Speed Control

The boat will maintain a preset speed by adjusting engine RPM.



Route Smoothing™

Automatically controls the speed at waypoints for smooth turns while navigating a designated route. On approach to the final waypoint, the boat will slow down and activate Point Lock™ automatically to hold on the destination.



Point Lock™*3

Allows the vessel to easily keep a fixed position by controlling the steering and shift, canceling the effects of wind and current.

*3 Rudder Angle Sensor is required.



SABIKI™ Lock

Expands upon the NAVpilot-300's SABIKI™ function by controlling both the steering and throttle to maintain stern direction, allowing the angler to focus 100% on jigging and other vertical fishing.



GATEWAY

By utilizing a gateway, it becomes possible to effectively operate a wide range of marine equipment.



34923-96L13-000

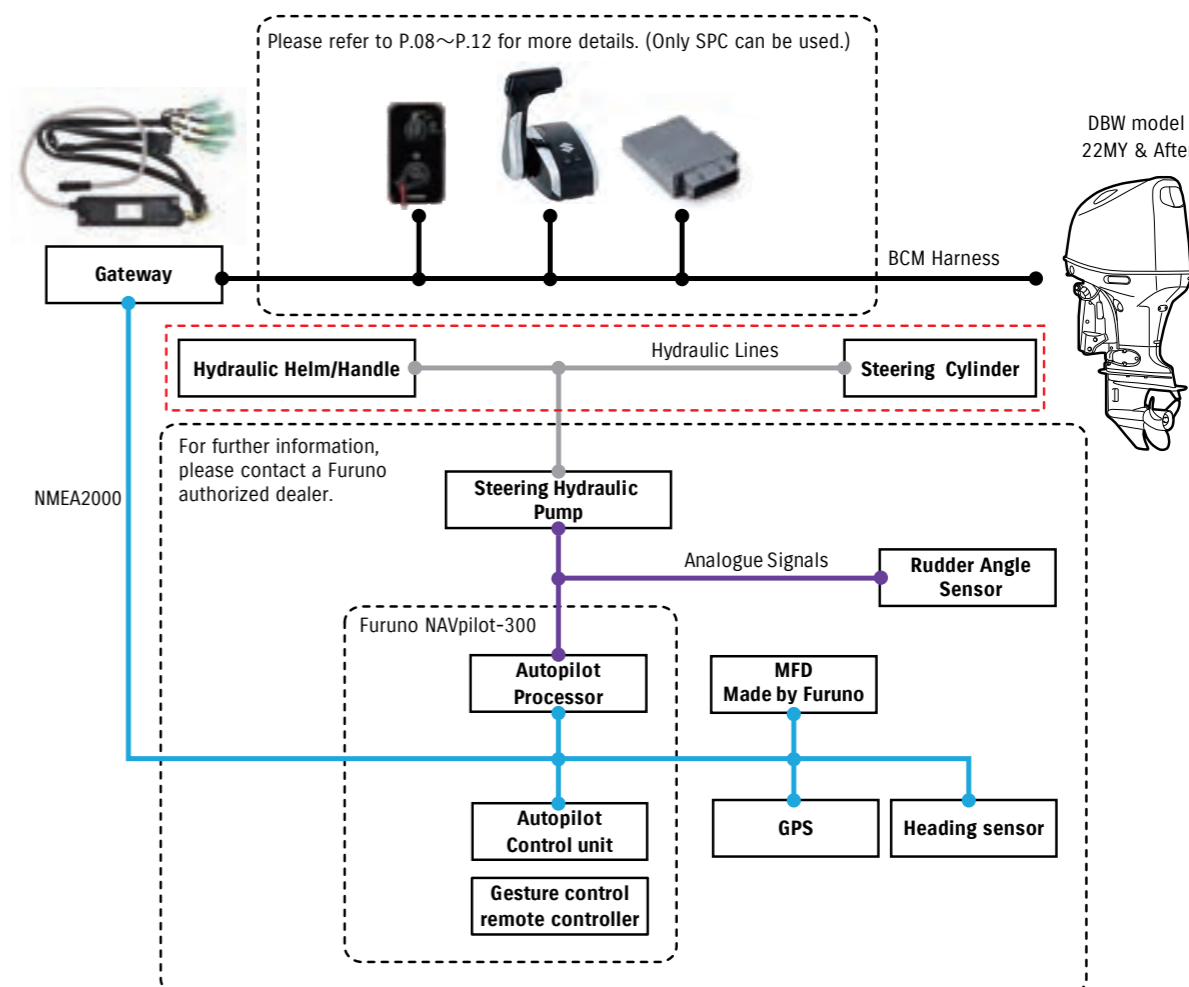
Applicable Display Brands and Functions

| | | | Engine REV | Single Engine | Engine REV | Up to 4 engines | Engine REV | Up to 6 engines | Suzuki Diagnosis | Fuel Tank Sender Setting | QR code*1 | Gauge Troll | Auto Trim Switch | KLS Encryption Key Input | FishHunter Drive** |
|-----------|--------------|----------------------------|------------|---------------|------------|-----------------|------------|-----------------|------------------|--------------------------|-----------|-------------|------------------|--------------------------|--------------------|
| Raymarine | Axiom Series | Lighthouse OS 4.1 or Later | ○ | ○ | | | ○ | | | | | | | | |
| Furuno | GP-1*71F | V5.0 or later | ○ | ○ | | | ○ | ○ | ○ | ○ | ○ | ○ | ○ | ○ | ○ |
| | TZTXL Series | V25.11 or later | ○ | ○ | ○ | ○ | ○ | ○ | ○ | ○ | ○ | ○ | ○ | ○ | ○ |

*1 QR Code is a registered trademark of DENSO WAVE.

*2 GP and TZTXL series display the mode and offer operation of some functions.

Connection Diagram for FishHunter™ Drive



SUZUKI DIAGNOSTIC SYSTEM MOBILE PLUS



The Suzuki Diagnostic System Mobile Plus (SDSM+) is an app that combines the existing functions of the former SDSM app with new, unique features to support our customer's marine life and experience.



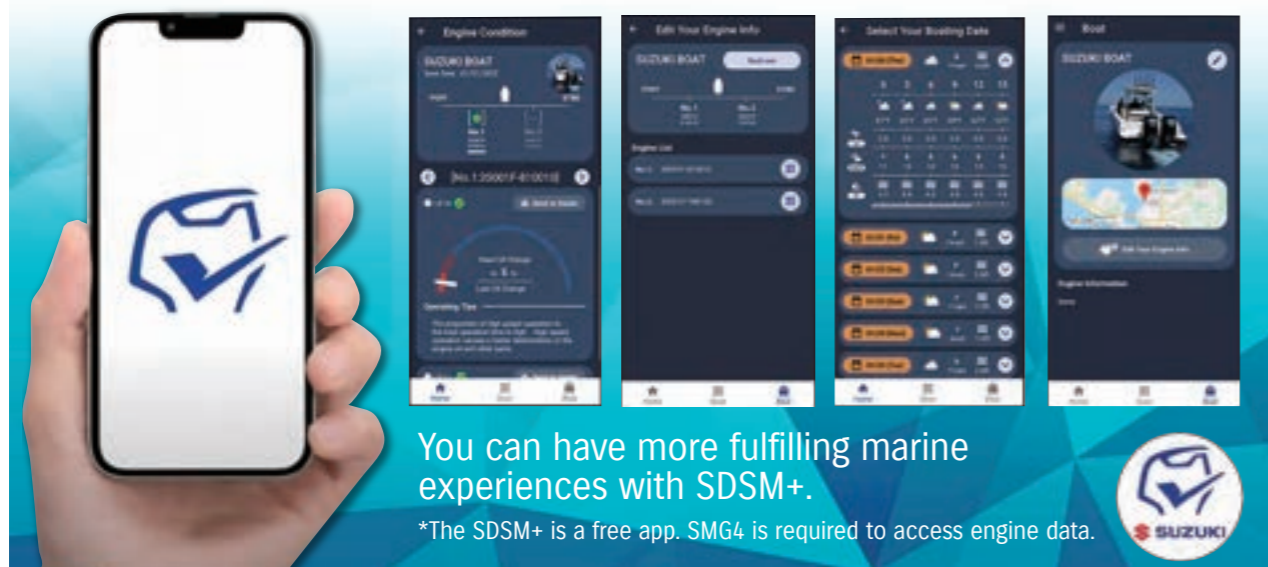
Website address:
https://www.globalsuzuki.com/marine/sdsm_plus/



Click QR code to homepage

What can SDSM+ Do?

1. Plan a boat trip with the forecast
 2. Inspect boat and outboard motor in advance
 3. Acquire engine data
- *The SDSM+ app is subject to updates and changes.
Images on this catalogue may differ from the actual screen.



You can have more fulfilling marine experiences with SDSM+.

*The SDSM+ is a free app. SMG4 is required to access engine data.



How to get the engine data.

Two options for you to get the engine data.

1. Using the QR code*

- The outboard will convert engine data into a QR code* displayed on the SMG4.
- Open the app and scan the QR code. The app will receive the engine data and automatically attach it to an e-mail.
- You can send the e-mail to your nearby dealer to shorten the maintenance time.



*DENSO WAVE owns the rights of the name and the logo of QR code.

2. Using the Bluetooth® unit

We have newly added the Bluetooth function this year. You can obtain ENGINE DATA via Bluetooth with the SUZUKI VERATRON GO PLUS+. (Android app is already released, and iOS app will be available from January 2026.)



SUZUKI VERATRON GO PLUS+

Part number : B00193301
Function : GPS, Clock, Speed, and all data available on the NMEA 2000® network
For more information, please visit <https://veratron.com/>.

SDSM+ Plays a Key Role in SYNCRO EYE

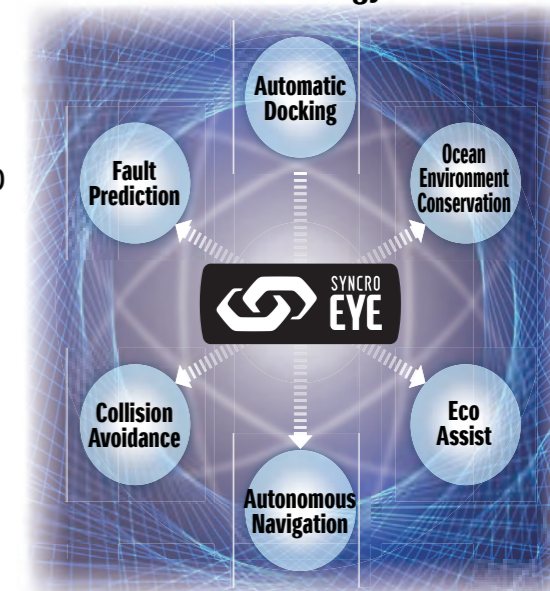


SYNCRO EYE, developed by Suzuki, integrates key functions like automatic docking, fault prediction, collision avoidance, and autonomous navigation to enhance boat safety and comfort.

Paired with the SDSM+ app, it allows easy trip planning and engine checks for safer, more efficient boating.



Suzuki's Technology Vision



SYNCRO EYE is the innovative technology shaping the future of marine life.

*Bluetooth® is a registered trademark of Bluetooth SIG, Inc.

*NMEA 2000® is a registered trademark of the National Marine Electronics Association.

| | | DF350A | DF350A | DF325A | DF300BMD | DF300B | DF300AP | DF250AP | DF200AP | DF175AP | DF150AP | DF250 | DF225 | DF200 | DF200A | DF175A | DF150A | DF140BG | DF140BZG | DF140B | DF115BG | DF115BZG | | | | | | | |
|--|---------|----------|--------|--------|----------|--------|---------|---------|---------|---------|---------|--------|--------|--------|--------|--------|--------|---------|----------|---------|---------|----------|---------|----------|----------|---------|---------|----------|----------|
| ITEM Applicable for Remote Control | PAGE | DF350AMD | DF350A | DF325A | DF300BMD | DF300B | DF300AP | DF250AP | DF200AP | DF175AP | DF150AP | DF250T | DF250Z | DF225T | DF225Z | DF200T | DF200Z | DF200AT | DF200AZ | DF175AT | DF175AZ | DF150AT | DF150AZ | DF140BTG | DF140BZG | DF140BT | DF140BZ | DF115BTG | DF115BZG |
| SUZUKI PRECISION CONTROL (SPC) | P.06-15 | | | | | | | | | | | | | | | | | | | | | | | | | | | | |
| MECHANICAL REMOTE CONTROL (CAN CONNECTION) | P.16-27 | | | | | | | | | | | | | | | | | | | | | | | | | | | | |
| MECHANICAL REMOTE CONTROL | P.28-29 | | | | | | | | | | | | | | | | | | | | | | | | | | | | |
| TROLL MODE SWITCH PANEL | P.23 | | | | | | | | | | | | | | | | | | | | | | | | | | | | |
| KEYLESS START SYSTEM (CAN CONNECTION) | P.30-31 | | | | | | | | | | | | | | | | | | | | | | | | | | | | |
| SUZUKI MULTI-FUNCTION GAUGE (SMG4) | P.32-39 | | | | | | | | | | | | | | | | | | | | | | | | | | | | |
| ANALOGUE INSTRUMENT | P.40-41 | | | | | | | | | | | | | | | | | | | | | | | | | | | | |
| STEERING | P.42-43 | | | | | | | | | | | | | | | | | | | | | | | | | | | | |
| TILLER HANDLE KIT | | | | | | | | | | | | | | | | | | | | | | | | | | | | | |
| DUAL-ENGINE TIE-BAR | | | | | | | | | | | | | | | | | | | | | | | | | | | | | |
| STEERING EXTENSION KIT | | | | | | | | | | | | | | | | | | | | | | | | | | | | | |
| STEERING-BRACKET ATTACHMENT | | | | | | | | | | | | | | | | | | | | | | | | | | | | | |
| DRAG-LINK KIT | | | | | | | | | | | | | | | | | | | | | | | | | | | | | |
| ELECTRICAL PARTS | | | | | | | | | | | | | | | | | | | | | | | | | | | | | |
| COUNTER SELECT CONNECTOR | P.11 | | | | | | | | | | | | | | | | | | | | | | | | | | | | |
| BATTERY CHARGING KIT (Only For MZ type) | P.45 | | | | | | | | | | | | | | | | | | | | | | | | | | | | |
| RECTIFIER SET (Only For MZ type) | P.45 | | | | | | | | | | | | | | | | | | | | | | | | | | | | |
| RECEPTACLE KIT (Only For MZ type) | P.45 | | | | | | | | | | | | | | | | | | | | | | | | | | | | |
| BATTERY ISOLATOR LEAD SET | P.45 | | | | | | | | | | | | | | | | | | | | | | | | | | | | |
| ELECTRIC STARTER KIT (Only For MZ type) | P.45 | | | | | | | | | | | | | | | | | | | | | | | | | | | | |

| | | DF115B | DF100C | DF100B | DF90A | DF80A | DF70A | DF60A | DF60AV | DF50A | DF50AV | DF40A | DF30A | DF25A | DF20A | DF15A | DF9.9B | DF9.9BT | DF9.9A | DF8A | | | | |
|--|---------|---------|---------|---------|---------|--------|--------|--------|--------|--------|--------|--------|--------|--------|--------|--------|--------|---------|--------|--------|---------|---------|---------|-------|
| ITEM Applicable for Tiller Handle | PAGE | DF115BT | DF115BZ | DF100CT | DF100BT | DF90AT | DF80AT | DF70AT | DF60AT | DF60AV | DF50AT | DF50AV | DF40AT | DF30AR | DF30AT | DF25AR | DF25AT | DF20AR | DF20AT | DF15AR | DF9.9BR | DF9.9BT | DF9.9AR | DF8AR |
| MECHANICAL REMOTE CONTROL (CAN CONNECTION) | P.16-27 | | | | | | | | | | | | | | | | | | | | | | | |
| MECHANICAL REMOTE CONTROL | P.28-29 | | | | | | | | | | | | | | | | | | | | | | | |
| REMOTE-CONTROL ATTACHMENT KIT | P.21-22 | | | | | | | | | | | | | | | | | | | | | | | |
| STEERING | P.42-43 | | | | | | | | | | | | | | | | | | | | | | | |
| TILLER HANDLE KIT | | | | | | | | | | | | | | | | | | | | | | | | |
| DUAL-ENGINE TIE-BAR | | | | | | | | | | | | | | | | | | | | | | | | |
| STEERING EXTENSION KIT | | | | | | | | | | | | | | | | | | | | | | | | |
| STEERING-BRACKET ATTACHMENT | | | | | | | | | | | | | | | | | | | | | | | | |
| DRAG-LINK KIT | | | | | | | | | | | | | | | | | | | | | | | | |
| ELECTRICAL PARTS | | | | | | | | | | | | | | | | | | | | | | | | |
| COUNTER SELECT CONNECTOR | P.11 | | | | | | | | | | | | | | | | | | | | | | | |
| BATTERY CHARGING KIT (Only For MZ type) | P.45 | | | | | | | | | | | | | | | | | | | | | | | |
| RECTIFIER SET (Only For MZ type) | P.45 | | | | | | | | | | | | | | | | | | | | | | | |
| RECEPTACLE KIT (Only For MZ type) | P.45 | | | | | | | | | | | | | | | | | | | | | | | |
| BATTERY ISOLATOR LEAD SET | P.45 | | | | | | | | | | | | | | | | | | | | | | | |
| ELECTRIC STARTER KIT (Only For MZ type) | P.45 | | | | | | | | | | | | | | | | | | | | | | | |



| | | DF90A | DF70A | DF60A | DF60AV | DF50A | DF50AV | DF40A | DF30A | DF25A | DF20A | DF15A | DF9.9B | DF9.9A | DF8A | DF6A | DF5A | DF4A | DF2.5 | |
|--|---------|---------|---------|---------|----------|---------|----------|---------|-------|-------|-------|---------|--------|----------|--------|------|------|------|-------|-------|
| ITEM Applicable for Tiller Handle | PAGE | DF90ATH | DF70ATH | DF60AQH | DF60AVTH | DF50AQH | DF50AVTH | DF40AQH | DF30A | DF25A | DF20A | DF15ATH | DF9.9B | DF9.9ATH | DF9.9A | DF8A | DF6A | DF5A | DF4A | DF2.5 |
| MECHANICAL REMOTE CONTROL (CAN CONNECTION) | P.16-27 | | | | | | | | | | | | | | | | | | | |
| MECHANICAL REMOTE CONTROL | P.28-29 | | | | | | | | | | | | | | | | | | | |
| REMOTE-CONTROL ATTACHMENT KIT | P.21-22 | | | | | | | | | | | | | | | | | | | |
| STEERING | P.42-43 | | | | | | | | | | | | | | | | | | | |
| TILLER HANDLE KIT | | | | | | | | | | | | | | | | | | | | |
| DUAL-ENGINE TIE-BAR | | | | | | | | | | | | | | | | | | | | |
| STEERING EXTENSION KIT | | | | | | | | | | | | | | | | | | | | |
| STEERING-BRACKET ATTACHMENT | | | | | | | | | | | | | | | | | | | | |
| DRAG-LINK KIT | | | | | | | | | | | | | | | | | | | | |
| ELECTRICAL PARTS | | | | | | | | | | | | | | | | | | | | |
| COUNTER SELECT CONNECTOR | P.11 | | | | | | | | | | | | | | | | | | | |
| BATTERY CHARGING KIT (Only For MZ type) | P.45 | | | | | | | | | | | | | | | | | | | |
| RECTIFIER SET (Only For MZ type) | P.45 | | | | | | | | | | | | | | | | | | | |
| RECEPTACLE KIT (Only For MZ type) | P.45 | | | | | | | | | | | | | | | | | | | |
| BATTERY ISOLATOR LEAD SET | P.45 | | | | | | | | | | | | | | | | | | | |
| ELECTRIC STARTER KIT (Only For MZ type) | P.45 | | | | | | | | | | | | | | | | | | | |

Reference

Part Number 15-digit alpha-numerical number shows Part Number to be used for ordering.
Applicable Model Shows typical or recommended models of ENGINES that RIGGING-PARTS and ACCESSORIES can be installed to.

Model Name and Engine Number Reference

NOTE: Items and their part numbers showing in this catalogue are basically applicable to models of following engine numbers. Please consult your local dealers regarding other models and their rigging-parts and accessories.

| model | engine number | model | engine number | model | engine number |
|----------|----------------|----------|----------------|--------|----------------|
| DF350AMD | 35001D-640001- | DF175A | 17503F-640001- | DF70A | 07003F-640001- |
| DF350A | 35001F-640001- | DF175AZ | 17503Z-640001- | DF60A | 06002F-640001- |
| DF325A | 32501F-640001- | DF150AP | 15003P-640001- | DF60AV | 06003F-640001- |
| DF300BMD | 30001D-640001- | DF150A | 15003F-640001- | DF50A | 05003F-640001- |
| DF300B | 30003F-640001- | DF150AZ | 15003Z-640001- | DF50AV | 05004F-640001- |
| DF300AP | 30002P-640001- | DF140B | 14005F-640001- | DF40A | 04003F-640001- |
| DF250AP | 25003P-640001- | DF140BZ | 14005Z-640001- | DF30A | 03003F-640001- |
| DF250 | 25003F-640001- | DF140BG | 14004F-640001- | DF25A | 02504F-640001- |
| DF250Z | 25003Z-640001- | DF140BZG | 14004Z-640001- | DF20A | 02002F-640001- |
| DF225 | 22503F-640001- | DF115B | 11505F-640001- | DF15A | 01504F-640001- |
| DF225Z | 22503Z-640001- | DF115BZ | 11506Z-640001- | DF9.9B | 00995F-640001- |
| DF200 | 20002F-640001- | DF115BG | 11505F-640001- | DF9.9A | 00994F-640001- |
| DF200Z | 20002Z-640001- | DF115BZG | 11505Z-640001- | DF8A | 00801F-640001- |
| DF200AP | 20003P-640001- | DF100C | 10005F-640001- | DF6A | 00603F-640001- |
| DF200A | 20003F-640001- | DF100B | 10004F-640001- | DF5A | 00503F-640001- |
| DF200AZ | 20003Z-640001- | DF90A | 09003F-640001- | DF4A | 00403F-640001- |
| DF175AP | 17503P-640001- | DF80A | 08002F-640001- | DF2.5 | 00252F-640001- |