



2024 SUZUKI GENUINE MARINE PARTS AND ACCESSORIES



# THE ULTIMATE OUTBOARD MOTOR

# 2024 SUZUKI GENUINE MARINE PARTS AND ACCESSORIES



Please read your Owner's Manual carefully. Never operate the boat while under the influence of alcohol or other drugs. Always wear a personal flotation device when boating. Please operate your outboard safely and responsibly.

Suzuki encourages you to operate your boat safely and with respect for the marine environment.

Specifications, appearances, equipment, colors, materials and other items of "SUZUKI" products shown in this catalogue are subject to change by manufacturers at any time without notice and they may vary depending on local conditions or requirements. Some models are not available in some territories. Each model might be discontinued without notice. Please enquire at your local dealer for details of any such changes. Actual body color might differ from the colors in this brochure.

## Suzuki Motor Corporation

300 TAKATSUKA-CHO, MINAMI-KU, HAMAMATSU-SHI, SHIZUOKA 432-8611 JAPAN  
www.globalsuzuki.com

2024 SUZUKI GENUINE MARINE P & A



Europe Edition 1  
Supply Source : MSC



# INDEX

## SUZUKI ULTIMATE RIGGING SELECTOR(04-05)

04 SUZUKI ULTIMATE RIGGING SELECTOR

## SYNCRO-EYE(06-07)

06 SYNCRO-EYE

## OPERATION SYSTEMS (08-53)

08 SUZUKI PRECISION CONTROL

18 MECHANICAL REMOTE CONTROL

32 KEYLESS START SYSTEM

34 SUZUKI MULTI-FUNCTION GAUGE (SMG4)

42 FishHunter™ Drive

44 SUZUKI DIAGNOSTIC SYSTEM MOBILE PLUS

46 ANALOGUE INSTRUMENT

48 STEERING

50 ELECTRICAL PARTS

51 SUZUKI MULTI-FUNCTION DISPLAY (SMD)

52 FUEL SYSTEM

## SUZUKI PROPELLERS (54-57)

54 WATERGRIP

56 PROPELLER LINE-UP

## MAINTAINING YOUR SUZUKI (58-63)

58 ECSTAR

60 CARE & MAINTENANCE ITEM

62 MAINTENANCE KITS

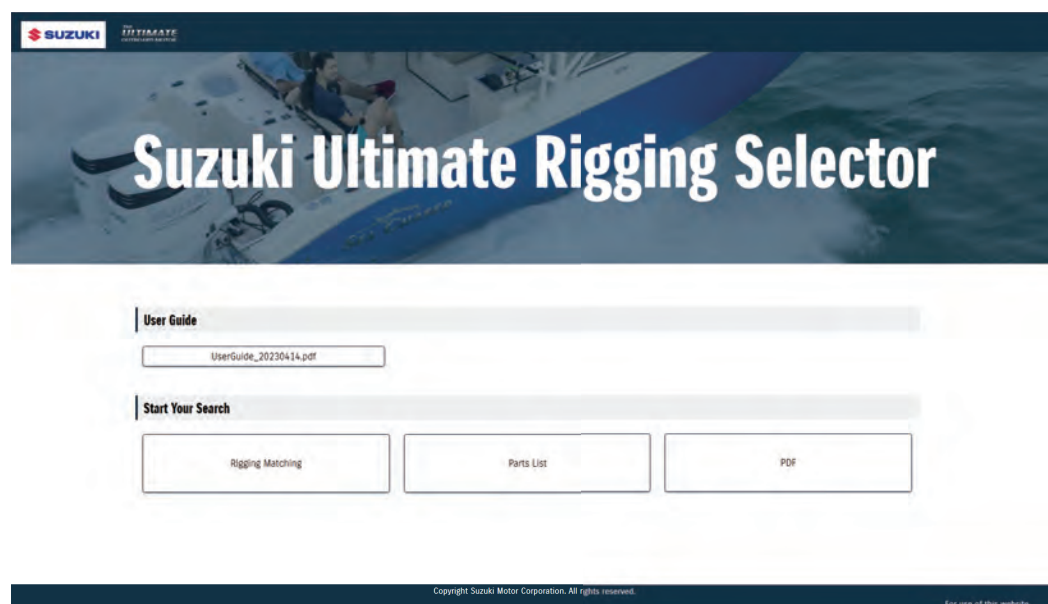
## APPLICATION CHART (64-65)

# SUZUKI ULTIMATE RIGGING SELECTOR



The Suzuki Ultimate Rigging Selector is a new website that Suzuki released. The website is designed to assist users in choosing which Part Number they will need for their desired application. It will help shorten users' search time and improve their search accuracy. The Suzuki Ultimate Rigging Selector currently consists of 3 sections: Rigging Matching, Parts List, and PDF.

## Website Top Page



Website address: <https://www.globalsuzuki.com/marine/SuzukiUltimateRiggingSelector/>



## Rigging Matching

Rigging Matching section will assist users in finding the appropriate rigging combinations along with their preference. The system automatically narrows down matching results by only several clicks, and required items will be listed up like below.

| Required Items |                 |  |     |             |   |
|----------------|-----------------|--|-----|-------------|---|
|                | PART NUMBER     | NAME   | QTY | NOTES       | REMARKS   |
| KIT            | 67000-98L03-000 | KIT, SINGLE ENGINE, 1st station              | 1   | Kit details | Click here to check kit components.                         |
| A              | 37100-98L00-000 | MAIN SWITCH PANEL                            | 1   |             |   |
| B              | 37803-98L00-000 | EMERGENCY SWITCH PANEL                       | 1   |             |   |
| C              | 36620-98L00-000 | MAIN WIRING HARNESS(6.5m / 21.3ft)           | 1   |             |   |
| D              | 36620-98L20-000 | MAIN WIRING HARNESS Extension (2m / 6.5ft)   | 1   | Optional    |   |
| E              | 37860-98L00-000 | TROLL MODE SWITCH PANEL                      | 1   | Optional    |   |
| GAUGE          | 34011-98L44-000 | SUZUKI MULTI-FUNCTION GAUGE (SMGA)           | 1   |             |   |
| GAUGE          | 36001-88L00-000 | CABLE KIT for SMGA                           | 1   | Kit details | MSC Single-source: Check kit details in Parts List Section. |
| Optional 1-1   | 34190-88L00-000 | SENSOR ASSY, PADDLE WHEEL (Speed Over Water) | 1   | Optional    | MSC Single-source: 99000-88317-000                          |
| Optional 1-2   | 39950-88L02-000 | GPS RECEIVER MODULE (Speed Over Ground)      | 1   | Optional    |   |

Click here to see the current selection.

## Parts List

Parts List section contains a list of Part Numbers and item photos. For some kits or sets, you can check the components by clicking on "kit detail".

| KITS/SETS |                 |                               |     |       |           |
|-----------|-----------------|-------------------------------|-----|-------|-----------|
|           | PART NUMBER     | NAME                          | QTY | NOTES | IMPORTANT |
| 1         | 47200-98L00-000 | TRANSUCE MOTOR AC BOX         | 1   |       |           |
| A         | 34790-98L00-000 | RIGHT CONTROL MODULE (RCM)    | 1   |       |           |
| B         | 34795-98L00-000 | RCM HOLDER(BROW)              | 1   |       |           |
| C         | 34796-98L00-000 | RCM HOLDER(BROW)              | 1   |       |           |
| D         | 33925-98L00-000 | RCM COUPLER                   | 1   |       |           |
| E         | 33926-98L00-000 | TERMINAL REGISTER             | 1   |       |           |
| F         | 34025-98L10-000 | BATTERY LEAD (2.2x17.2ft)     | 1   |       |           |
| G         | 34023-98L00-000 | RCM #1 WIRING HARNESS (DOWEL) | 1   |       |           |
|           | 08403-13402-000 | HARNESS CLAMP                 | 10  |       |           |

Click here to see the contents.

Click "close" to close the list.  
(if the "close" button is not visible, try scrolling down)

## PDF

PDF section is mainly for items that do not fit the format of above two sections.

Items in this section are easier to check in a chart.



# Integrated Control System



"SYNCR0-EYE" is a comprehensive system Suzuki has developed which "connects" various devices so that they may work together in synchronization. This innovative system will also improve the control technology of the boat by "sensing" various situations surrounding the boat and be compatible with future technologies.





# SUZUKI PRECISION CONTROL

Suzuki Precision Control : SPC (Drive By Wire) is a technologically advanced computer-based control system with electronic wiring that eliminates the source of friction and resistance. While you enjoy smooth throttle and shift operation, the system's computer is processing and transmitting commands in real-time to actuators at the engine that deliver precise throttle controls with smoother, decisive shifting.

Suzuki Precision Control : SPC features:

- Control of up to 6 OBM units.
- Automatic Trim available by using SMD or SMG4.

Find out more here:



## Remote Control Box

- Integrated SELECT and THROTTLE ONLY switches.
- 1-lever operation for multiple outboards (Dual Top Mount).



Single Top Mount



Dual Top Mount

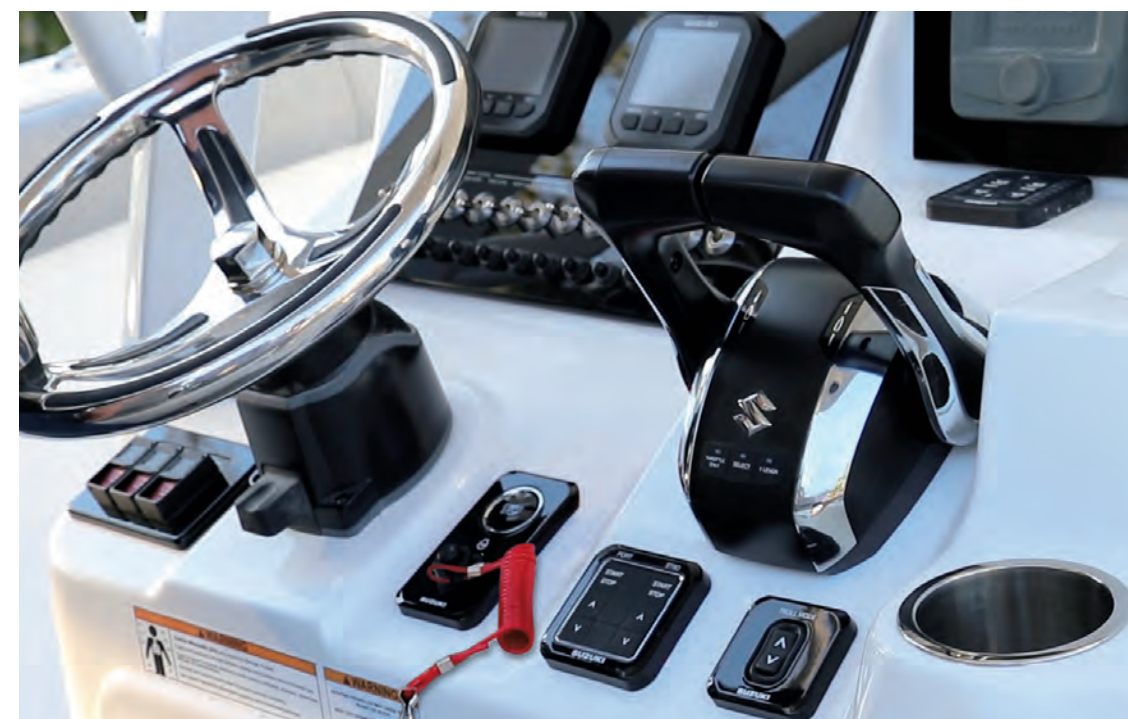


Flush Mount

Integrated emergency stop switch  
(Flush Mount Only)

## Switch Panels

- Mounting bolts concealed for a smooth, luxurious finish.
  - 1 action start/stop for multi-installation boats.  
(Engines start in order from port to starboard)
- ⇒ See page 12 for a reference of switch panel selection.



# COMPONENT PARTS

## 1 R/C BOX TOP MOUNT R/C BOX

## FLUSH MOUNT R/C BOX



**67200-98L00-000**  
for Single Engine



**67200-98L10-000**  
for Dual Engine



**67200-98L20-000**  
for Single Engine

## 2 CONTROL PANEL



**37120-98L00-000**  
for Dual Engine



**37120-98L10-000**  
for Triple Engine



**37120-98L20-000**  
for Quadruple Engine  
PORT



**37120-98L30-000**  
for Quadruple Engine,  
Quintuple Engine  
STBD



**37120-98L40-000**  
for Quintuple Engine  
PORT



**37120-98L50-000**  
for Sextuple Engine  
PORT



**37120-98L60-000**  
for Sextuple Engine  
STBD

## 3 BUZZER



**38500-93J90-000**

## 4 BOAT CONTROL MODULE



**36770-98L04-000**

## BCM HOLDER (F) BCM HOLDER (R)



**36775-98L00-000**  
(F)  
**36776-98L00-000**  
(R)

## BCM CUSHION



**33925-98L00-000**

## 5 TERMINAL RESISTOR



**33926-98L00-000**

## 6 BATTERY LEAD WIRE



**36625-98J10-000**  
2.2m / 7.2ft

**36625-98J20-000**  
6.1m / 20ft

## 7 BCM #1 WIRING HARNESS



**36623-98L00-000**  
for Single Engine

**36623-98L30-000**  
for Dual or Triple  
Engine

**36623-98L40-000**  
for  
Quadruple, Quintuple,  
and Sextuple Engine

## 8 HARNESS, EMERGENCY SWITCH EXTENSION



**36627-98L10-000**  
1.5m / 4.9ft

## 9 SIGNAL CONVERTER UNIT



**37140-98L00-000**

## 10 DUAL STATION WIRING HARNESS



**36622-98L00-000**

## 11 BCM #2 WIRING HARNESS



**36624-98L00-000**  
for Single Engine

**36624-98L10-000**  
for Dual or Triple  
Engine

**36624-98L20-000**  
for Quadruple,  
Quintuple, and  
Sextuple engines

## 12 ENGINE WIRING HARNESS



**36621-98L00-000**

## A MAIN SWITCH PANEL (REGULAR KEY)



**37100-98L10-000**  
Vertical type with  
Emergency stop  
switch



**37100-98L20-000**  
Horizontal type with  
Emergency stop  
switch



**37100-98L00-000**  
Ignition only, use with  
emergency switch

# COMPONENT PARTS

## A MAIN SWITCH PANEL (KEYLESS START SYSTEM)



**37290-98L10-000**  
Vertical type with Emergency stop switch



**37290-98L20-000**  
Horizontal type with Emergency stop switch



**37290-98L00-000**  
Ignition only, use with emergency switch



**37803-98L00-000**

## B EMERGENCY SWITCH PANEL

## C MAIN WIRING HARNESS



**36620-98L00-000**  
6.5m / 21.3ft for control system

**36620-98L10-000**  
9.5m / 31.1ft for control system

## D MAIN WIRING HARNESS EXTENSION

**36620-98L20-000**  
2.0m / 6.5ft for control system

## E TROLL MODE SWITCH PANEL



**37860-98L00-000**

## F R/C BOX HARNESS EXTENSION



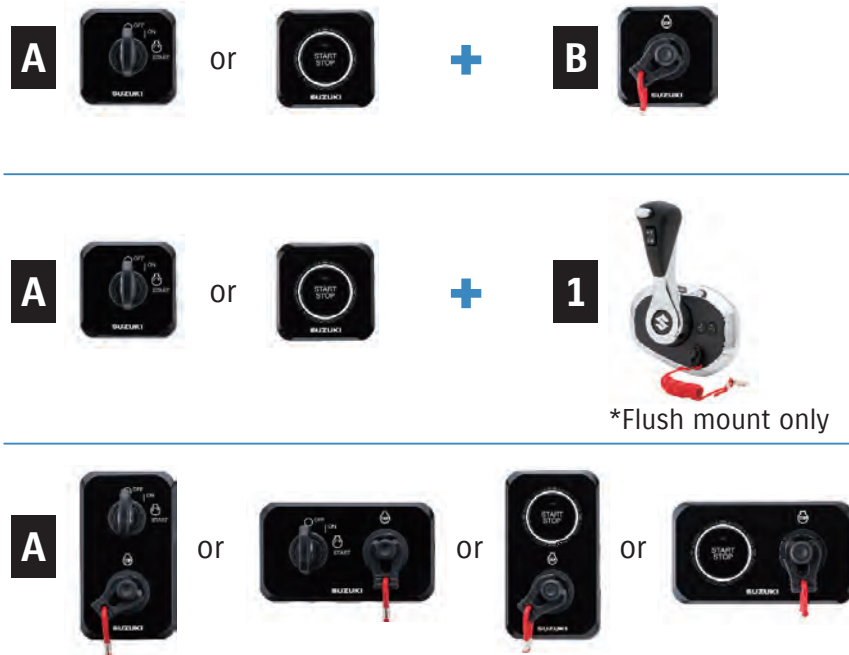
**36627-98L00-000**  
1.0m / 3.2ft

## G HARNESS COMP, CAN EXT



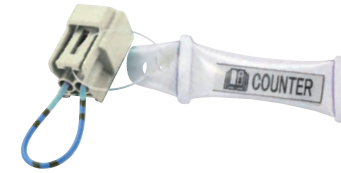
**36627-98L20-000**  
2.0m / 6.5ft for triple engine, and quadruple engine

### Switch Panel Selection Reference



# EXTRA OPTION

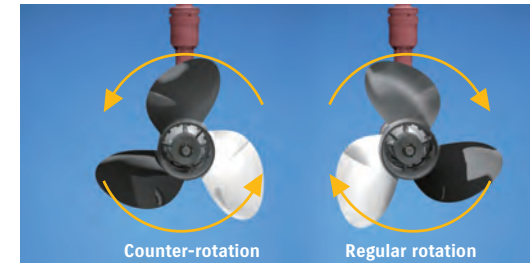
## COUNTER SELECT CONNECTOR



### 36612-98J20-000

Applicable Model DF150AP/175AP/200AP, DF250AP/300AP

Converts to counter rotation specification.



## Suzuki Selective Rotation

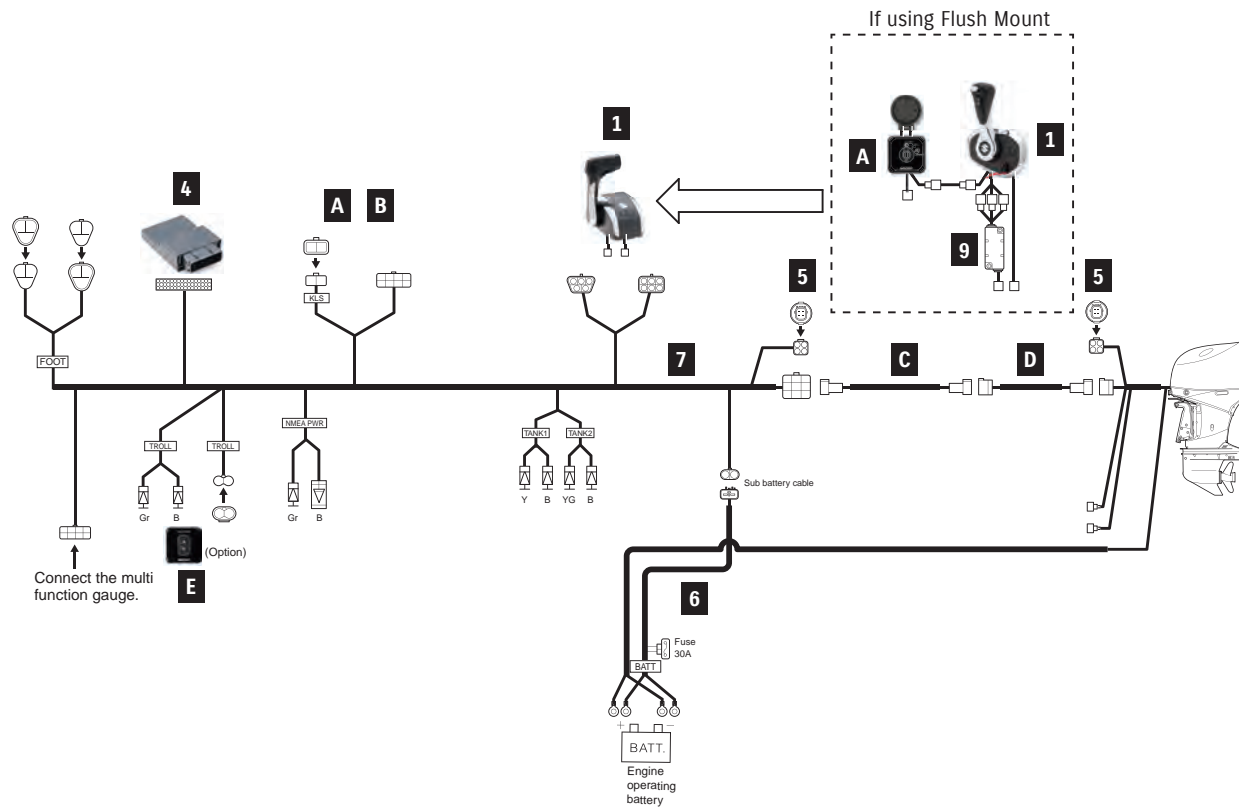
In multi-outboard installations on large boats, a counter-rotation outboard is usually paired with a regular rotation model to help keep the boat travelling on an even keel and in a straight line. Suzuki Selective Rotation eliminates the need to purchase a dedicated counter-rotation outboard by using a special switch that turns a regular rotation outboard into a counter-rotation model.

**SUZUKI SELECTIVE ROTATION**



# REMOTE-CONTROL KIT

## SINGLE ENGINE

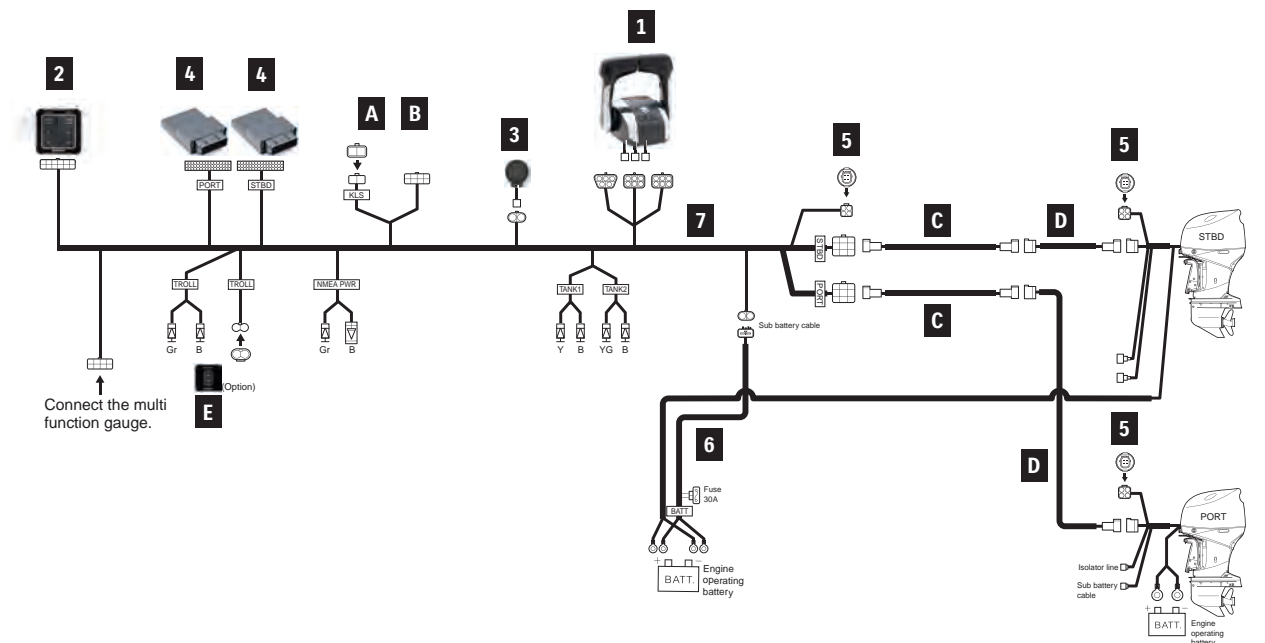


Items A ~ F are not included in the Kits. Please purchase them separately.

| For SINGLE ENGINE |  | KIT  |                                    |                                    |                                    |                                    |
|-------------------|--|--|------------------------------------|------------------------------------|------------------------------------|------------------------------------|
| PART NUMBER       | PART NAME  | LENGTH   | TOP-MOUNT                          |                                    | FLUSH-MOUNT                        |                                    |
|                   |  |  | 1st STATION KIT<br>67000-98L04-000 | 2nd STATION KIT<br>67000-98LA4-000 | 1st STATION KIT<br>67000-98L14-000 | 2nd STATION KIT<br>67000-98LB4-000 |
| 1                 | 67200-98L00-000<br>67200-98L20-000   | TOP MOUNT R/C BOX<br>FLUSH MOUNT R/C BOX   | 1<br>-                             | 1<br>-                             | -<br>1                             | -<br>1                             |
| 3                 | 38500-93J90-000<br>09407-08401-000   | WARNING BUZZER<br>WARNING BUZZER CLAMP   | -<br>-                             | 1<br>1                             | -<br>-                             | 1<br>1                             |
| 4                 | 36770-98L04-000<br>36775-98L00-000<br>36776-98L00-000<br>33925-98L00-000                                       | BOAT CONTROL MODULE<br>BCM HOLDER (F)<br>BCM HOLDER (R)<br>BCM CUSHION   | 1<br>1<br>1<br>1                   | 1<br>1<br>1<br>1                   | 1<br>1<br>1<br>1                   | 1<br>1<br>1<br>1                   |
| 5                 | 33926-98L00-000  | TERMINAL RESISTOR  | 2                                  | -                                  | 2                                  | -                                  |
| 6                 | 36625-98J10-000  | BATTERY-LEAD   | 1                                  | -                                  | 1                                  | -                                  |
| 7                 | 36623-98L00-000  | BCM #1 WIRING HARNESS  | 1                                  | -                                  | 1                                  | -                                  |
| 8                 | 36627-98L10-000  | HARNESS ASSY,EM SWITCH EXT   | -                                  | -                                  | 1                                  | 1                                  |
| 9                 | 37140-98L00-000  | UNIT COMP,SIGNAL CONVERTER   | -                                  | -                                  | 1                                  | 1                                  |
| 10                | 36622-98L00-000  | DUAL-STATION WIRING HARNESS  | -                                  | 1                                  | -                                  | 1                                  |
| 11                | 36624-98L00-000  | BCM #2 WIRING HARNESS  | -                                  | 1                                  | -                                  | 1                                  |
| -                 | 09403-13402-000  | HARNESS CLAMP  | 10                                 | 10                                 | 10                                 | 10                                 |
| A                 | 37100-98L00-000<br>37100-98L10-000<br>37100-98L20-000<br>37290-98L00-000<br>37290-98L10-000<br>37290-98L20-000 | MAIN SWITCH PANEL<br>MAIN SWITCH PANEL VERTICAL<br>MAIN SWITCH PANEL HORIZONTAL<br>MAIN SWITCH PANEL (Keyless)<br>MAIN SWITCH PANEL VERTICAL (Keyless)<br>MAIN SWITCH PANEL HORIZONTAL (Keyless) | Select type                        | Select type                        | 37100-98L00<br>or<br>37290-98L00   | 37290-98L00                        |
| B                 | 37803-98L00-000  | EMERGENCY SWITCH PANEL   | *1                                 | *1                                 |                                    |                                    |
| C                 | 36620-98L00-000<br>36620-98L10-000   | MAIN WIRING HARNESS  | 6.5m/21.3ft<br>9.5m/31.1ft         | 1 per station                      |                                    |                                    |
| D                 | 36620-98L20-000  | MAIN WIRING HARNESS EXTENSION  | 2.0m/6.5ft                         | Select if necessary                |                                    |                                    |
| E                 | 37860-98L00-000  | TROLL MODE SWITCH PANEL (optional)   |                                    | Optional                           |                                    |                                    |
| F                 | 36627-98L00-000  | HARNESS COMP,R/CON EXT   | 1.0m/3.2ft                         |                                    | 1                                  | 1                                  |

\*Required when using 37100-98L00 or 37290-98L00 with TOP MOUNT.

## DUAL ENGINE



Items A ~ F are not included in the Kits. Please purchase them separately.

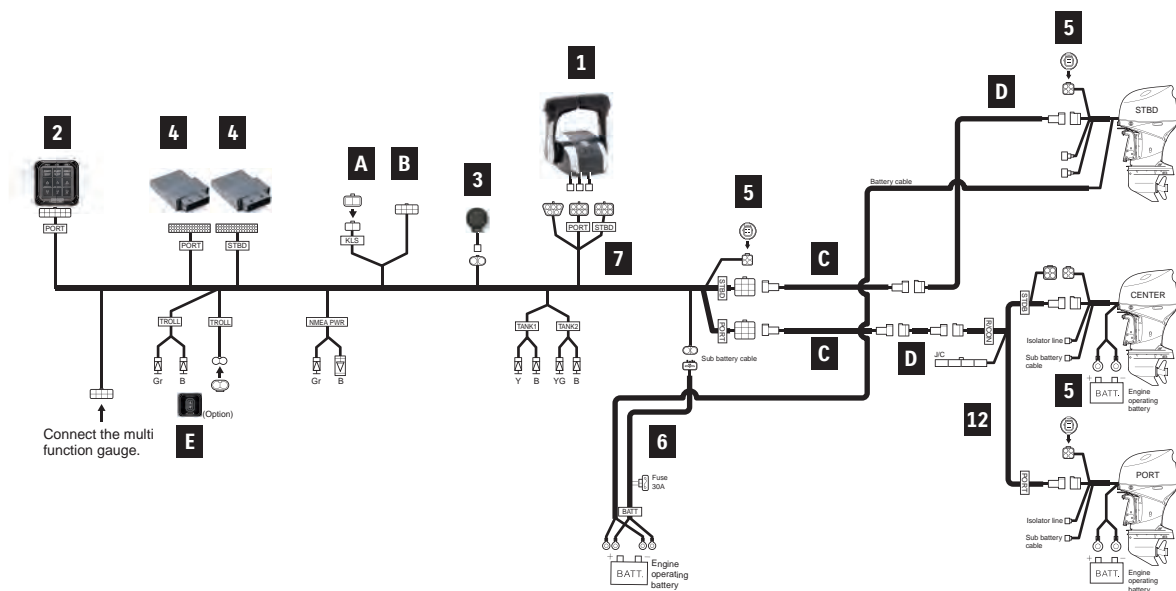
| For DUAL ENGINE |  | KIT  |                            |                     |
|-----------------|--|--|----------------------------|---------------------|
| PART NUMBER     | PART NAME  | LENGTH   | 1st STATION KIT            | 2nd STATION KIT     |
|                 |  |  | 67000-98L24-000            | 67000-98LC4-000     |
| 1               | 67200-98L10-000  | TOP MOUNT R/C BOX  | 1                          | 1                   |
| 2               | 37120-98L00-000  | CONTROL PANEL  | 1                          | 1                   |
| 3               | 38500-93J90-000<br>09407-08401-000   | WARNING BUZZER<br>WARNING BUZZER CLAMP   | 1<br>1                     | 2<br>2              |
| 4               | 36770-98L04-000<br>36775-98L00-000<br>36776-98L00-000<br>33925-98L00-000                                       | BOAT CONTROL MODULE<br>BCM HOLDER (F)<br>BCM HOLDER (R)<br>BCM CUSHION   | 2<br>2<br>2<br>2           | 2<br>2<br>2<br>2    |
| 5               | 33926-98L00-000  | TERMINAL RESISTOR  | 3                          | -                   |
| 6               | 36625-98J10-000  | BATTERY-LEAD   | 1                          | -                   |
| 7               | 36623-98L30-000  | BCM #1 WIRING HARNESS  | 1                          | -                   |
| 10              | 36622-98L00-000  | DUAL-STATION WIRING HARNESS  | -                          | 1                   |
| 11              | 36624-98L10-000  | BCM #2 WIRING HARNESS  | -                          | 1                   |
| -               | 09403-13402-000  | HARNESS CLAMP  | 15                         | 10                  |
| -               | 36612-98J20-000  | CONNECTOR, COUNTER SELECT  | 1                          | -                   |
| A               | 37100-98L00-000<br>37100-98L10-000<br>37100-98L20-000<br>37290-98L00-000<br>37290-98L10-000<br>37290-98L20-000 | MAIN SWITCH PANEL<br>MAIN SWITCH PANEL VERTICAL<br>MAIN SWITCH PANEL HORIZONTAL<br>MAIN SWITCH PANEL (Keyless)<br>MAIN SWITCH PANEL VERTICAL (Keyless)<br>MAIN SWITCH PANEL HORIZONTAL (Keyless) | Select type                | Select type         |
| B               | 37803-98L00-000  | EMERGENCY SWITCH PANEL   | *1                         | *1                  |
| C               | 36620-98L00-000<br>36620-98L10-000   | MAIN WIRING HARNESS  | 6.5m/21.3ft<br>9.5m/31.1ft | 2 per station       |
| D               | 36620-98L20-000  | MAIN WIRING HARNESS EXTENSION  | 2.0m/6.5ft                 | Select if necessary |
| E               | 37860-98L00-000  | TROLL MODE SWITCH PANEL (optional)   |                            | Optional            |
| F               | 36627-98L00-000  | HARNESS COMP,R/CON EXT   | 1.0m/3.2ft                 | Select if necessary |

\*Required when using 37100-98L00 or 37290-98L00 with TOP MOUNT.

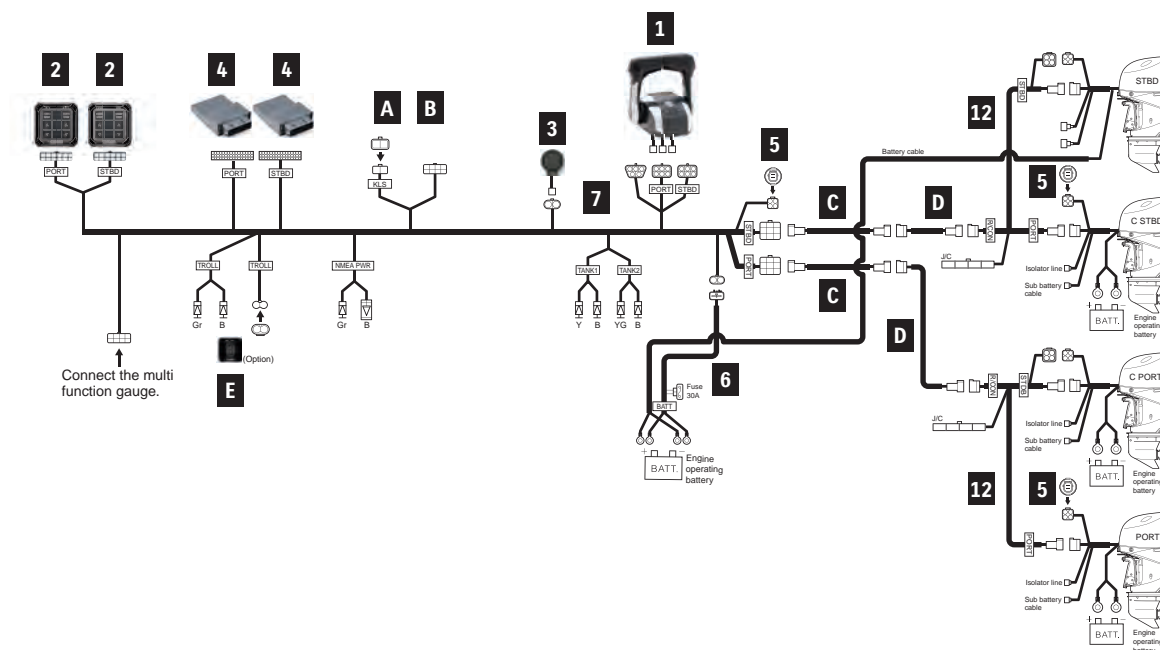


# REMOTE-CONTROL KIT

## TRIPLE ENGINE



## QUADRUPLE ENGINE



Items A ~ G are not included in the Kits. Please purchase them separately.

| For TRIPLE ENGINE |                 |  |                                    | KIT                                |  |
|-------------------|-----------------|--|------------------------------------|------------------------------------|--|
| PART NUMBER       | PART NAME       | LENGTH                                 | 1st STATION KIT<br>67000-98L34-000 | 2nd STATION KIT<br>67000-98LD4-000 |  |
| 1                 | 67200-98L10-000 | TOP MOUNT R/C BOX                      | 1                                  | 1                                  |  |
| 2                 | 37120-98L10-000 | CONTROL PANEL                          | 1                                  | 1                                  |  |
| 3                 | 38500-93J90-000 | WARNING BUZZER                         | 1                                  | 2                                  |  |
|                   | 09407-08401-000 | WARNING BUZZER CLAMP                   | 1                                  | 2                                  |  |
| 4                 | 36770-98L04-000 | BOAT CONTROL MODULE                    | 2                                  | 2                                  |  |
|                   | 36775-98L00-000 | BCM HOLDER (F)                         | 2                                  | 2                                  |  |
|                   | 36776-98L00-000 | BCM HOLDER (R)                         | 2                                  | 2                                  |  |
|                   | 33925-98L00-000 | BCM CUSHION                            | 2                                  | 2                                  |  |
| 5                 | 33926-98L00-000 | TERMINAL RESISTOR                      | 3                                  | -                                  |  |
| 6                 | 36625-98J10-000 | BATTERY-LEAD                           | 1                                  | -                                  |  |
| 7                 | 36623-98L30-000 | BCM #1 WIRING HARNESS                  | 1                                  | -                                  |  |
| 10                | 36622-98L00-000 | DUAL-STATION WIRING HARNESS            | -                                  | 1                                  |  |
| 11                | 36624-98L10-000 | BCM #2 WIRING HARNESS                  | -                                  | 1                                  |  |
| 12                | 36621-98L00-000 | ENGINE WIRING HARNESS                  | 1                                  | -                                  |  |
| -                 | 09403-13402-000 | HARNESS CLAMP                          | 18                                 | 10                                 |  |
| -                 | 36612-98J20-000 | CONNECTOR, COUNTER SELECT              | 1                                  | -                                  |  |
| A                 | 37100-98L00-000 | MAIN SWITCH PANEL                      | Select type                        | Select type                        |  |
|                   | 37100-98L10-000 | MAIN SWITCH PANEL VERTICAL             |                                    |                                    |  |
|                   | 37100-98L20-000 | MAIN SWITCH PANEL HORIZONTAL           |                                    |                                    |  |
|                   | 37290-98L00-000 | MAIN SWITCH PANEL (Keyless)            |                                    |                                    |  |
|                   | 37290-98L10-000 | MAIN SWITCH PANEL VERTICAL (Keyless)   |                                    |                                    |  |
|                   | 37290-98L20-000 | MAIN SWITCH PANEL HORIZONTAL (Keyless) |                                    |                                    |  |
| B                 | 37803-98L00-000 | EMERGENCY SWITCH PANEL                 | *1                                 | *1                                 |  |
| C                 | 36620-98L00-000 | MAIN WIRING HARNESS                    | 6.5m/21.3ft                        | 2 per station                      |  |
|                   | 36620-98L10-000 | MAIN WIRING HARNESS EXTENSION          | 9.5m/31.1ft                        |                                    |  |
| D                 | 36620-98L20-000 | MAIN WIRING HARNESS EXTENSION          | 2.0m/6.5ft                         | Select if necessary                |  |
| E                 | 37860-98L00-000 | TROLL MODE SWITCH PANEL                |                                    | Optional                           |  |
| F                 | 36627-98L00-000 | HARNESS COMP, R/CON EXT                | 1.0m/3.2ft                         | Select if necessary                |  |
| G                 | 36627-98L20-000 | HARNESS COMP, CAN EXT                  | 2.0m/6.5ft                         | Select if necessary                |  |

\*Required when using 37100-98L00 or 37290-98L00 with TOP MOUNT.

Items A ~ G are not included in the Kits. Please purchase them separately.

| For QUADRUPLE ENGINE |                 |  |                                    | KIT                                |  |
|----------------------|-----------------|--|------------------------------------|------------------------------------|--|
| PART NUMBER          | PART NAME       | LENGTH                                 | 1st STATION KIT<br>67000-98L44-000 | 2nd STATION KIT<br>67000-98LE4-000 |  |
| 1                    | 67200-98L10-000 | TOP MOUNT R/C BOX                      | 1                                  | 1                                  |  |
| 2                    | 37120-98L20-000 | CONTROL PANEL PORT                     | 1                                  | 1                                  |  |
|                      | 37120-98L30-000 | CONTROL PANEL STBD                     | 1                                  | 1                                  |  |
| 3                    | 38500-93J90-000 | WARNING BUZZER                         | 1                                  | 2                                  |  |
|                      | 09407-08401-000 | WARNING BUZZER CLAMP                   | 1                                  | 2                                  |  |
| 4                    | 36770-98L04-000 | BOAT CONTROL MODULE                    | 2                                  | 2                                  |  |
|                      | 36775-98L00-000 | BCM HOLDER (F)                         | 2                                  | 2                                  |  |
|                      | 36776-98L00-000 | BCM HOLDER (R)                         | 2                                  | 2                                  |  |
|                      | 33925-98L00-000 | BCM CUSHION                            | 2                                  | 2                                  |  |
| 5                    | 33926-98L00-000 | TERMINAL RESISTOR                      | 3                                  | -                                  |  |
| 6                    | 36625-98J10-000 | BATTERY-LEAD                           | 1                                  | -                                  |  |
| 7                    | 36623-98L40-000 | BCM #1 WIRING HARNESS                  | 1                                  | -                                  |  |
| 10                   | 36622-98L00-000 | DUAL-STATION WIRING HARNESS            | -                                  | 1                                  |  |
| 11                   | 36624-98L20-000 | BCM #2 WIRING HARNESS                  | -                                  | 1                                  |  |
| 12                   | 36621-98L00-000 | ENGINE WIRING HARNESS                  | 2                                  | -                                  |  |
| -                    | 09403-13402-000 | HARNESS CLAMP                          | 20                                 | 15                                 |  |
| -                    | 36612-98J20-000 | CONNECTOR, COUNTER SELECT              | 2                                  | -                                  |  |
| A                    | 37100-98L00-000 | MAIN SWITCH PANEL                      | Select type                        | Select type                        |  |
|                      | 37100-98L10-000 | MAIN SWITCH PANEL VERTICAL             |                                    |                                    |  |
|                      | 37100-98L20-000 | MAIN SWITCH PANEL HORIZONTAL           |                                    |                                    |  |
|                      | 37290-98L00-000 | MAIN SWITCH PANEL (Keyless)            |                                    |                                    |  |
|                      | 37290-98L10-000 | MAIN SWITCH PANEL VERTICAL (Keyless)   |                                    |                                    |  |
|                      | 37290-98L20-000 | MAIN SWITCH PANEL HORIZONTAL (Keyless) |                                    |                                    |  |
| B                    | 37803-98L00-000 | EMERGENCY SWITCH PANEL                 | *1                                 | *1                                 |  |
| C                    | 36620-98L00-000 | MAIN WIRING HARNESS                    | 6.5m/21.3ft                        | 2 per station                      |  |
|                      | 36620-98L10-000 | MAIN WIRING HARNESS EXTENSION          | 9.5m/31.1ft                        |                                    |  |
| D                    | 36620-98L20-000 | MAIN WIRING HARNESS EXTENSION          | 2.0m/6.5ft                         | Select if necessary                |  |
| E                    | 37860-98L00-000 | TROLL MODE SWITCH PANEL                |                                    | Optional                           |  |
| F                    | 36627-98L00-000 | HARNESS COMP,R/CON EXT                 | 1.0m/3.2ft                         | Select if necessary                |  |
| G                    | 36627-98L20-000 | HARNESS COMP,CAN EXT                   | 2.0m/6.5ft                         | Select if necessary                |  |

\*Required when using 37100-98L00 or 37290-98L00 with TOP MOUNT.

# MECHANICAL REMOTE CONTROL



For mechanical control models from year 2023, we introduced a new Main Wiring Harness. This harness enables CAN connection, which allows mechanical models to use functions that were previously exclusive to SPC models.  
By using with the SMG4, it also enables the Automatic trim and use of the new Keyless Start System\*.

## Functions available using the CAN Harness

|                          | DF40A-60A | DF70A-100B | DF100C-140B | DF150A-200A | DF200-250 |
|--------------------------|-----------|------------|-------------|-------------|-----------|
| CAN Connection           | ✓         | ✓          | ✓           | ✓           | X         |
| Automatic Trim           | X         | X          | ✓           | ✓           | X         |
| New Keyless Start System | X         | ✓          | ✓           | ✓           | X         |

\*If using the new Keyless Start System, please ensure to use the new switch panels.  
The Keyless Start System is only available in limited regions. If you are not sure about your market, please check with your country coordinator.

## REMOTE-CONTROL

|   | Reference  |                 |                              |                 |
|---|--|-----------------|------------------------------|-----------------|
| MAIN WIRING HARNESS<br>(CAN Connection) | 36620-93JA0/B0/C0<br>  |                 |                              |                 |
| REMOTE CONTROL BOX                      | 67200-88L02<br>  | 67200-88L12<br> | 67200-93J34<br>              | 67200-93J70<br> |
| MAIN SWITCH PANEL<br>(Regular Key)      | 37100-98L**<br>  |                 |                              |                 |
| MAIN SWITCH PANEL<br>(Keyless)          | 37290-98L**<br><br>Remark: SMG4 is necessary for using Keyless system. |                 |                              |                 |
| GAUGE                                   | SMG4 (page 34)<br>   |                 | Analogue Gauge (page 46)<br> |                 |

# COMPONENT OF MECHANICAL REMOTE CONTROL

## 1 R/C BOX TOP MOUNT R/C BOX

TOP MOUNT R/C BOX DUAL

FLUSH MOUNT R/C BOX



**67200-88L02-000**  
for Single Engine  
Applicable Model DF8A-250



**67200-88L12-000**  
for Dual Engine  
Applicable Model DF70A-250



**67200-93J34-000**  
for Single Engine  
Applicable Model DF8A-250

SIDE MOUNT REMOTE CONTROL BOX



**67200-91J32-000**  
for Single Engine. Without IGN SW  
Applicable Model DF4A-6A

**67200-94J40-000**  
for Single Engine. With warning  
buzzer without PTT switch  
Applicable Model DF8A-30A

**67200-93J70-000**  
for Single Engine. With PTT switch  
Applicable Model DF9.9B-250

## 2 MAIN SWITCH PANEL (REGULAR KEY)



**37100-98L10-000**  
Vertical type With  
Emergency stop switch  
Applicable Model DF9.9B-250



**37100-98L20-000**  
Horizontal type With  
Emergency stop switch  
Applicable Model DF9.9B-250



**37100-98L30-000**  
Dual Ignition With  
Emergency stop switch  
Applicable Model DF9.9B-250



**37100-98L00-000**  
Ignition switch only  
Applicable Model DF9.9B-250

## 2 MAIN SWITCH PANEL (KEYLESS START SYSTEM with CAN Connection)



**37290-98L10-000**  
Vertical type with  
Emergency stop  
switch



**37290-98L20-000**  
Horizontal type with  
Emergency stop  
switch



**37290-98L00-000**  
Ignition switch only



**37803-98L00-000**

## 3 EMERGENCY SWITCH PANEL

## 4 MAIN WIRING HARNESS (CAN Connection)

MAIN WIRING HARNESS  
EXTENSION



**36620-93JA0-000**  
6.5m/21.3ft for Control system  
Applicable Model DF40A-200A

**36620-93JB0-000**  
5.0m/16.4ft for Control system  
Applicable Model DF40A-200A

**36620-93JC0-000**  
8.0m/26.2ft for Control system  
Applicable Model DF40A-200A



**36620-93JD0-000**  
Extension, 2.0m/6.5ft  
Applicable Model DF40A-200A

**36620-93JE0-000**  
Extension, 3.0m/9.8ft  
Applicable Model DF40A-200A

## 4 MAIN WIRING HARNESS (Non-CAN Connection)

MAIN WIRING HARNESS  
EXTENSION



**36620-93J70-000**  
6.5m/21.3ft for Control system  
Applicable Model DF40A-250

**36620-93J80-000**  
5.0m/16.4ft for Control system  
Applicable Model DF40A-250

**36620-93J90-000**  
8.0m/26.2ft for Control system  
Applicable Model DF40A-250

**36620-89L10-000**  
6.5m/21.3ft for Control system  
Applicable Model DF8A/DF9.9B/  
15A/20A

**36620-94L20-000**  
6.5m/21.3ft for Control system  
Applicable Model DF25A/30A

**36620-93J12-000**  
2.0m/6.5ft for Control system  
Applicable Model DF8A/  
DF9.9B-250

**36620-93J42-000**  
3.0m/9.8ft for Control system  
Applicable Model DF8A/  
DF9.9B-250

**5** REMOTE-CONTROL CABLE (ORT THROTTLE AND SHIFT CABLES)



**67320-93J00-000**  
2.44 m / 8.0 ft  
Applicable Model DF4A-250

**67320-93J10-000**  
3.05 m / 10.0 ft  
Applicable Model DF4A-250

**67320-93J20-000**  
3.66 m / 12.0 ft  
Applicable Model DF4A-250

**67320-93J30-000**  
4.27 m / 14.0 ft  
Applicable Model DF4A-250

**67320-93J40-000**  
4.88 m / 16.0 ft  
Applicable Model DF4A-250

**67320-93J50-000**  
5.49 m / 18.0 ft  
Applicable Model DF4A-250

**67320-93J60-000**  
6.10 m / 20.0 ft  
Applicable Model DF4A-250

**67320-93J70-000**  
6.71 m / 22.0 ft  
Applicable Model DF4A-250

**67320-93J80-000**  
7.32 m / 24.0 ft  
Applicable Model DF4A-250

**6** PTT SWITCH PANEL



**37805-88L00-000**  
Applicable Model DF40A-250

**7** KEYLESS CONTROL UNIT



**37171-98L02-000**  
433MHz for CAN connection

**37171-98L11-000**  
315MHz for CAN connection

**8** HARNESS ASSY, KEYLESS CONTROL



**36623-98LA0-000**  
for CAN connection

**9** BUZZER ASSY



**38500-93J90-000**

**10** RELAY ASSY, KLS



**38860-96L01-000**

**11** KEY FOB



**37172-96L03-000**  
433MHz

**37172-96L11-000**  
315MHz

**12** HARNESS ASSY, KLS DUAL ENGINE

No photo available

**36621-98L31-000**

**13** WIRE COMP, CAN

No photo available

**36661-96L40-000**

SPACER KIT



**67500-88L00-000**  
for Single Top-mount type  
Applicable Model DF8A-250

**67500-88L10-000**  
for Dual Top-mount type  
Applicable Model DF70A-250

REMOTE CONTROL ATTACHMENT KIT

Converts ME model to REMOTE-CONTROL model.



**67101-97L00-000**  
Applicable Model DF4A-6A

**67130-89L22-000**  
Applicable Model DF9.9B/15A/20A

**67130-94L30-000**  
Applicable Model DF25A/30A  
(Year 2023~)

**67130-94L20-000**  
Applicable Model DF25ATH/30ATH  
(Year 2023~)

**67130-99J02-000**  
Requires CLAMP BRACKET SET  
(41100-99JL0-YAY)  
Applicable Model DF8A/9.9A

CLAMP BRACKET SET

No photo available

**41100-99JL0-YAY**  
Required to install  
67130-99J02  
Applicable Model DF8A/9.9A

\* Europe: 433MHz

TWIN REMOTE-CONTROL  
ATTACHMENT KIT



**67140-95601-000**

Applicable Model DF9.9B-30A/  
100C-250

BATTERY LEAD



**36625-93J10-000**

6.7 m / 21.9ft  
Applicable Model DF100C-200A/  
200-250

**36625-93J01-000**

3.9 m / 12.7ft  
Applicable Model DF100C-200A/  
200-250

KEYLESS PARTS HOLDER



**37173-96L10-000**

HOLDER



**32980-38F00-000**

CUSHION



**32851-93J00-000**



## EXTRA OPTIONS

### RIGGING TUBE



**990C0-20010-000**

Applicable Model DF70A-350A  
\*Connect to the hose adapter  
equipped on the engine

### TROLL MODE SWITCH PANEL



## SUZUKI TROLL MODE SYSTEM

#### Troll Mode Switch:

An option for Remote Control models from DF40A and over, this system allows the user to adjust engine speed in 50rpm increments, giving highly precise control at low revs. With its own tachometer and control switch, it works alongside our multi-function gauges and analogue gauges.

(Tiller Handle Models from DF40A and over have Suzuki Troll Mode System as standard equipment)

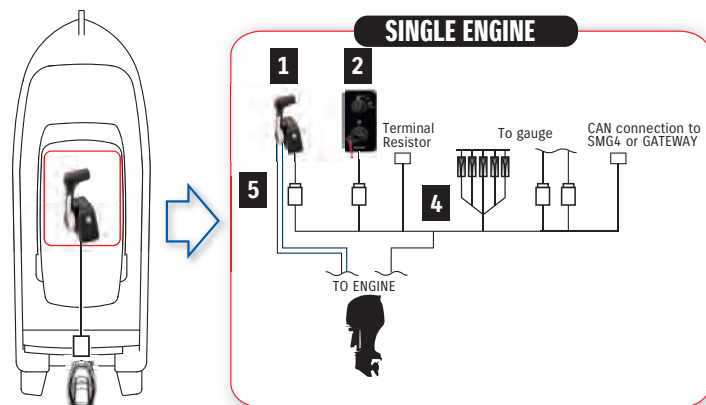
\*Not Applicable for DF250/225/200, DF250W, DF150W, DF90AWQH

**37860-98L00-000**

Applicable Model DF40A-200A/  
150AP-300AP/  
300B/325A/350A

Activates SUZUKI Troll Mode  
System and controls RPM  
from idling engine speed up to  
1200rpm at every 50rpm.

## SINGLE ENGINE with CAN Connection



| For SINGLE ENGINE (SINGLE STATION, REGULAR KEY) |                 |                                    |               | Required Quantity |             |            |
|---|-----------------|------------------------------------|---------------|-------------------|-------------|------------|
|   | PART NUMBER     | PART NAME                          | LENGTH        | TOP-MOUNT         | FLUSH-MOUNT | SIDE-MOUNT |
| 1   | 67200-88L02-000 | TOP MOUNT R/C BOX                  |               | 1                 | -           | -          |
|   | 67200-93J34-000 | FLUSH MOUNT R/C BOX                |               | -                 | 1           | -          |
|   | 67200-93J70-000 | SIDE MOUNT R/C BOX                 |               | -                 | -           | 1          |
| 2   | 37100-98L10-000 | PANEL ASSY, MAIN SWITCH VERTICAL   |               | 1                 | 1           | -          |
|   | 37100-98L20-000 | PANEL ASSY, MAIN SWITCH HORIZONTAL |               |                   |             |            |
|   | 37100-98L00-000 | MAIN SWITCH PANEL                  |               |                   |             |            |
| 3   | 37803-98L00-000 | EMERGENCY SWITCH PANEL             |               | *1                | *1          | -          |
| 4   | 36620-93JA0-000 | MAIN WIRING HARNESS                | 6.5m / 21.3ft | 1                 | 1           | 1          |
|   | 36620-93JB0-000 | MAIN WIRING HARNESS                | 5.0m / 16.4ft |                   |             |            |
|   | 36620-93JC0-000 | MAIN WIRING HARNESS                | 8.0m / 26.2ft |                   |             |            |
|   | 36620-93JD0-000 | WIRE ASSY, REMOTE CONTROL EXT      | 2.0m / 6.5ft  |                   |             |            |
|   | 36620-93JE0-000 | WIRE ASSY, REMOTE CONTROL EXT      | 3.0m / 9.8ft  |                   |             |            |
| 5   | 67320-93J00-000 | R/C CABLE                          | 2.4m / 8.0ft  | Optional          | Optional    | Optional   |
|   | 67320-93J10-000 |                                    | 3.0m / 9.8ft  |                   |             |            |
|   | 67320-93J20-000 |                                    | 3.6m / 12.0ft |                   |             |            |
|   | 67320-93J30-000 |                                    | 4.2m / 14.0ft |                   |             |            |
|   | 67320-93J40-000 |                                    | 4.8m / 16.0ft |                   |             |            |
|   | 67320-93J50-000 |                                    | 5.4m / 18.0ft |                   |             |            |
|   | 67320-93J60-000 |                                    | 6.1m / 20.0ft |                   |             |            |
|   | 67320-93J70-000 |                                    | 6.7m / 22.0ft |                   |             |            |
| 67320-93J80-000                                 | 7.3m / 24.0ft   |                                    |               |                   |             |            |
|   |                 |                                    |               | Select two        |             |            |

\*Only if using 37100-98L00-000

## For KEYLESS START SYSTEM

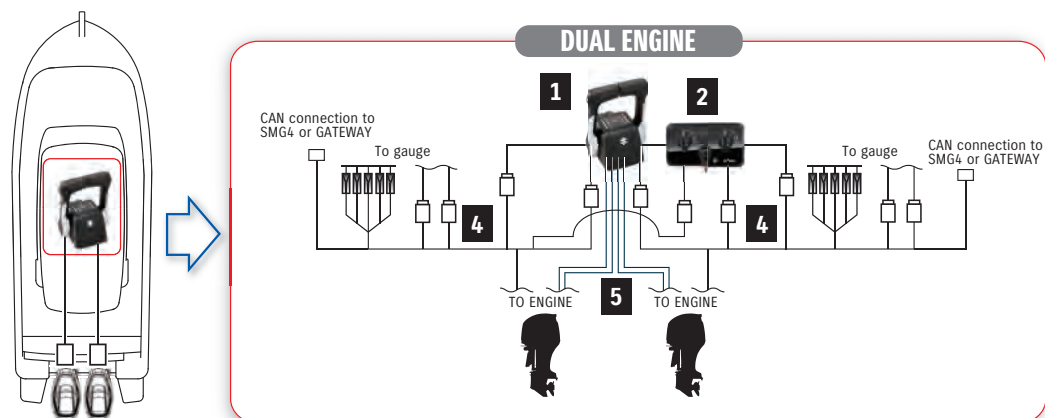
| For SINGLE ENGINE (SINGLE STATION with KEYLESS SYSTEM) |                 |                                    |               | Required Quantity |             |
|--|-----------------|------------------------------------|---------------|-------------------|-------------|
|  | PART NUMBER     | PART NAME                          | LENGTH        | TOP-MOUNT         | FLUSH-MOUNT |
| 1  | 67200-88L02-000 | TOP MOUNT R/C BOX                  |               | 1                 | -           |
|  | 67200-93J34-000 | FLUSH MOUNT R/C BOX                |               | -                 | 1           |
| 2  | 37290-98L10-000 | PANEL ASSY, MAIN SWITCH VERTICAL   |               | 1                 |             |
|  | 37290-98L20-000 | PANEL ASSY, MAIN SWITCH HORIZONTAL |               |                   |             |
|  | 37290-98L00-000 | MAIN SWITCH PANEL                  |               |                   |             |
| 3  | 37803-98L00-000 | EMERGENCY SWITCH PANEL             |               | *1                |             |
| 4  | 36620-93JA0-000 | MAIN WIRING HARNESS                | 6.5m / 21.3ft | 1                 |             |
|  | 36620-93JB0-000 | MAIN WIRING HARNESS                | 5.0m / 16.4ft |                   |             |
|  | 36620-93JC0-000 | MAIN WIRING HARNESS                | 8.0m / 26.2ft |                   |             |
|  | 36620-93JD0-000 | WIRE ASSY, REMOTE CONTROL EXT      | 2.0m / 6.5ft  |                   |             |
|  | 36620-93JE0-000 | WIRE ASSY, REMOTE CONTROL EXT      | 3.0m / 9.8ft  |                   |             |
| 5  | 67320-93J00-000 | R/C CABLE                          | 2.4m / 8.0ft  | Optional          | Optional    |
|  | 67320-93J10-000 |                                    | 3.0m / 9.8ft  |                   |             |
|  | 67320-93J20-000 |                                    | 3.6m / 12.0ft |                   |             |
|  | 67320-93J30-000 |                                    | 4.2m / 14.0ft |                   |             |
|  | 67320-93J40-000 |                                    | 4.8m / 16.0ft |                   |             |
|  | 67320-93J50-000 |                                    | 5.4m / 18.0ft |                   |             |
|  | 67320-93J60-000 |                                    | 6.1m / 20.0ft |                   |             |
|  | 67320-93J70-000 |                                    | 6.7m / 22.0ft |                   |             |
| 67320-93J80-000  | 7.3m / 24.0ft   |                                    |               |                   |             |
| 7  | 37171-98L02-000 | CONTROLLER ASSY, KLS 433           |               | 1                 |             |
|  | 37171-98L11-000 | CONTROLLER ASSY, KLS 315           |               |                   |             |
| 8  | 36623-98LA0-000 | HARNESS ASSY, KLS CONT             |               | 1                 |             |
| 9  | 38500-93J90-000 | BUZZER ASSY                        |               | 1                 |             |
| 10   | 38860-96L01-000 | RELAY ASSY, KLS                    |               | 1                 |             |
| 11   | 37172-96L03-000 | KEY FOB 433 MHZ                    |               | 2                 |             |
|  | 37172-96L11-000 | KEY FOB 315 MHZ                    |               |                   |             |

\*Only if using 37100-98L00-000



\* Europe: 433MHz

## DUAL ENGINE with CAN Connection



| For DUAL ENGINE (SINGLE STATION, REGULAR KEY) |                                    | Required Quantity                             |               |               |
|---|------------------------------------|---|---------------|---------------|
| PART NUMBER                                   | PART NAME                          | LENGTH  | TOP MOUNT     | SIDE MOUNT    |
| 1   | 67200-88L12-000<br>67200-93J70-000 | TOP MOUNT R/C BOX DUAL<br>REMOTE CONTROL ASSY | 1<br>-        | -<br>2        |
| 2   | 37100-98L30-000                    | PANEL ASSY, MAIN SWITCH MULTI                 | 1             | -             |
| 4   | 36620-93JA0-000                    | MAIN WIRING HARNESS                           | 6.5m / 21.3ft | 2             |
|   | 36620-93JB0-000                    | MAIN WIRING HARNESS                           | 5.0m / 16.4ft |               |
|   | 36620-93JC0-000                    | MAIN WIRING HARNESS                           | 8.0m / 26.2ft |               |
|   | 36620-93JD0-000                    | WIRE ASSY, REMOTE CONTROL EXT                 | 2.0m / 6.5ft  |               |
| 5   | 36620-93JE0-000                    | WIRE ASSY, REMOTE CONTROL EXT                 | 3.0m / 9.8ft  | Optional      |
|   | 67320-93J00-000                    | R/C CABLE                                     | 2.4m / 8.0ft  | Select four   |
|   | 67320-93J10-000                    |   | 3.0m / 9.8ft  |               |
|   | 67320-93J20-000                    |   | 3.6m / 12.0ft |               |
|   | 67320-93J30-000                    |   | 4.2m / 14.0ft |               |
| 67320-93J40-000                               | 4.8m / 16.0ft                      |   |               |               |
| 5   | 67320-93J50-000                    | 5.4m / 18.0ft                                 | 6.1m / 20.0ft | 6.7m / 22.0ft |
|   | 67320-93J60-000                    | 6.1m / 20.0ft                                 |               |               |
|   | 67320-93J70-000                    | 6.7m / 22.0ft                                 |               |               |
|   | 67320-93J80-000                    | 7.3m / 24.0ft                                 |               |               |
| 13  | 36661-96L40-000                    | WIRE COMP, CAN                                | 1             | 1             |

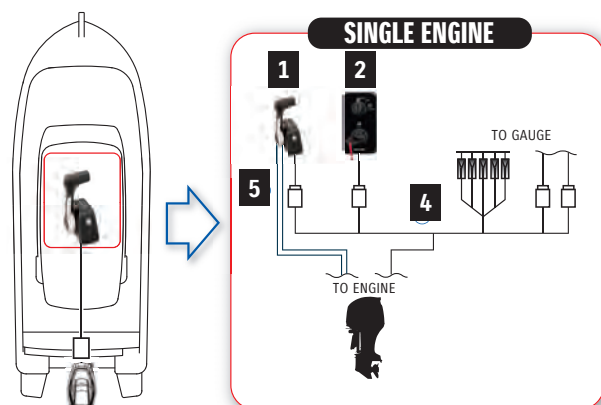
## For KEYLESS START SYSTEM

| For DUAL ENGINE (SINGLE STATION with KEYLESS SYSTEM) |                 |                               |               | Required Quantity |
|--|-----------------|-------------------------------|---------------|-------------------|
| PART NUMBER  | PART NAME       | LENGTH                        |               |                   |
| 1  | 67200-88L12-000 | TOP MOUNT R/C BOX DUAL        |               | 1                 |
| 2  | 37290-98L00-000 | PANEL ASSY, ENG START SW      |               | 2                 |
|  | 37803-98L00-000 | PANEL ASSY, EMERGENCY SW      |               | 1                 |
| 4  | 36620-93JA0-000 | MAIN WIRING HARNESS           | 6.5m / 21.3ft | 2                 |
|  | 36620-93JB0-000 | MAIN WIRING HARNESS           | 5.0m / 16.4ft |                   |
|  | 36620-93JC0-000 | MAIN WIRING HARNESS           | 8.0m / 26.2ft |                   |
|  | 36620-93JD0-000 | WIRE ASSY, REMOTE CONTROL EXT | 2.0m / 6.5ft  |                   |
| 5  | 36620-93JE0-000 | WIRE ASSY, REMOTE CONTROL EXT | 3.0m / 9.8ft  | Optional          |
|  | 67320-93J00-000 | R/C CABLE                     | 2.4m / 8.0ft  | Select four       |
|  | 67320-93J10-000 |                               | 3.0m / 9.8ft  |                   |
|  | 67320-93J20-000 |                               | 3.6m / 12.0ft |                   |
|  | 67320-93J30-000 |                               | 4.2m / 14.0ft |                   |
|  | 67320-93J40-000 |                               | 4.8m / 16.0ft |                   |
|  | 67320-93J50-000 |                               | 5.4m / 18.0ft |                   |
|  | 67320-93J60-000 |                               | 6.1m / 20.0ft |                   |
| 67320-93J70-000                                      | 6.7m / 22.0ft   |                               |               |                   |
| 67320-93J80-000                                      | 7.3m / 24.0ft   |                               |               |                   |
| 7  | 37171-98L02-000 | CONTROLLER ASSY, KLS 433      |               | 1                 |
|  | 37171-98L11-000 | CONTROLLER ASSY, KLS 315      |               |                   |
| 8  | 36623-98LA0-000 | HARNESS ASSY, KLS CONT        |               | 1                 |
| 9  | 38500-93J90-000 | BUZZER ASSY                   |               | 2                 |
| 10   | 38860-96L01-000 | RELAY ASSY, KLS               |               | 1                 |
| 11   | 37172-96L03-000 | KEY FOB 433 MHz               |               | 2                 |
|  | 37172-96L11-000 | KEY FOB 315 MHz               |               |                   |
| 12   | 36621-98L31-000 | HARNESS ASSY, KLS DUAL ENG    |               | 1                 |

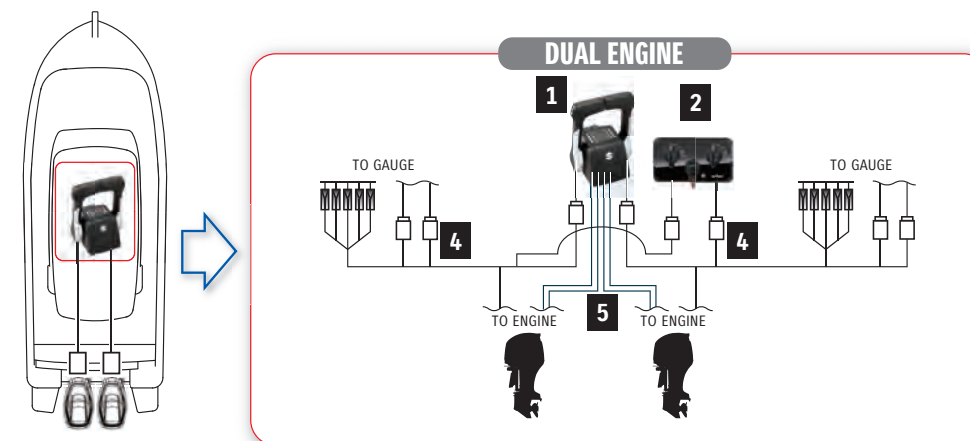


\* Europe: 433MHz

## SINGLE ENGINE with Non-CAN Connection



## DUAL ENGINE with NON-CAN Connection



| For SINGLE ENGINE (Single Station) |                 |                                  |               | Required Quantity              |             |            |
|------------------------------------|-----------------|----------------------------------|---------------|--------------------------------|-------------|------------|
| PART NUMBER                        | PART NAME       | LENGTH                           |               | Top-MOUNT                      | FLUSH-MOUNT | SIDE-MOUNT |
| 1                                  | 67200-88L02-000 | TOP MOUNT R/C BOX                |               | 1                              | -           | -          |
|                                    | 67200-93J34-000 | FLUSH MOUNT R/C BOX              |               | -                              | 1           | -          |
|                                    | 67200-93J70-000 | SIDE MOUNT R/C BOX               |               | -                              | -           | 1          |
| 2                                  | 37100-98L00-000 | MAIN SWITCH PANEL IG SWITCH ONLY |               | 1                              |             | -          |
|                                    | 37100-98L10-000 | MAIN SWITCH PANEL VERTICAL       |               | (Select type)                  |             | -          |
|                                    | 37100-98L20-000 | MAIN SWITCH PANEL HORIZONTAL     |               |                                |             | -          |
| 3                                  | 37803-98L00-000 | PANEL ASSY, EMERGENCY SWITCH     |               | *1                             |             | -          |
| 4                                  | 36620-93J70-000 | MAIN WIRING HARNESS              | 6.5m / 21.3ft | Select one                     |             |            |
|                                    | 36620-93J80-000 |                                  | 5.0m / 16.4ft |                                |             |            |
|                                    | 36620-93J90-000 | MAIN WIRING HARNESS EXTENSION    | 8.0m / 26.2ft | Optional. Select if necessary. |             |            |
|                                    | 36620-93J12-000 |                                  | 2.0m / 6.5ft  |                                |             |            |
|                                    | 36620-93J41-000 |                                  | 3.0m / 9.8ft  |                                |             |            |
| 5                                  | R/C CABLE       | 67320-93J00-000                  | 2.4m / 8.0ft  | Select two                     |             |            |
|                                    |                 | 67320-93J10-000                  | 3.0m / 9.8ft  |                                |             |            |
|                                    |                 | 67320-93J20-000                  | 3.6m / 12.0ft |                                |             |            |
|                                    |                 | 67320-93J30-000                  | 4.2m / 14.0ft |                                |             |            |
|                                    |                 | 67320-93J40-000                  | 4.8m / 16.0ft |                                |             |            |
|                                    |                 | 67320-93J50-000                  | 5.4m / 18.0ft |                                |             |            |
|                                    |                 | 67320-93J60-000                  | 6.1m / 20.0ft |                                |             |            |
|                                    |                 | 67320-93J70-000                  | 6.7m / 22.0ft |                                |             |            |
| 67320-93J80-000                    | 7.3m / 24.0ft   |                                  |               |                                |             |            |

\*Only needed if using 37100-98L00

| For DUAL ENGINE (Single station) |                 |                                  |               |             | Required Qty            |  |
|----------------------------------|-----------------|----------------------------------|---------------|-------------|-------------------------|--|
| PART NUMBER                      | PART NAME       | LENGTH                           | Qty           |             | Single Station          |  |
| 1                                | 67200-88L12-000 | TOP MOUNT R/C BOX                | 1             |             | 1                       |  |
| 2                                | 37100-98L00-000 | MAIN SWITCH PANEL IG SWITCH ONLY | 2             |             | Select -98L00 OR -98L30 |  |
|                                  | 37100-98L30-000 | DUAL IGNITION WITH E/S SWITCH    | 1             |             |                         |  |
| 3                                | 37803-98L00-000 | PANEL ASSY, EMERGENCY SWITCH     | *1            |             | *1                      |  |
| 4                                | 36620-93J70-000 | MAIN WIRING HARNESS              | 6.5m / 21.3ft | Select two  | 2                       |  |
|                                  | 36620-93J80-000 |                                  | 5.0m / 16.4ft |             |                         |  |
|                                  | 36620-93J90-000 | MAIN WIRING HARNESS EXTENSION    | 8.0m / 26.2ft | Optional    |                         |  |
|                                  | 36620-93J12-000 |                                  | 2.0m / 6.5ft  |             |                         |  |
| 36620-93J42-000                  | 3.0m / 9.8ft    |                                  |               |             |                         |  |
| 5                                | R/C CABLE       | 67320-93J00-000                  | 2.4m / 8.0ft  | Select four | 4                       |  |
|                                  |                 | 67320-93J10-000                  | 3.0m / 9.8ft  |             |                         |  |
|                                  |                 | 67320-93J20-000                  | 3.6m / 12.0ft |             |                         |  |
|                                  |                 | 67320-93J30-000                  | 4.2m / 14.0ft |             |                         |  |
|                                  |                 | 67320-93J40-000                  | 4.8m / 16.0ft |             |                         |  |
|                                  |                 | 67320-93J50-000                  | 5.4m / 18.0ft |             |                         |  |
|                                  |                 | 67320-93J60-000                  | 6.1m / 20.0ft |             |                         |  |
|                                  |                 | 67320-93J70-000                  | 6.7m / 22.0ft |             |                         |  |
| 67320-93J80-000                  | 7.3m / 24.0ft   |                                  |               |             |                         |  |

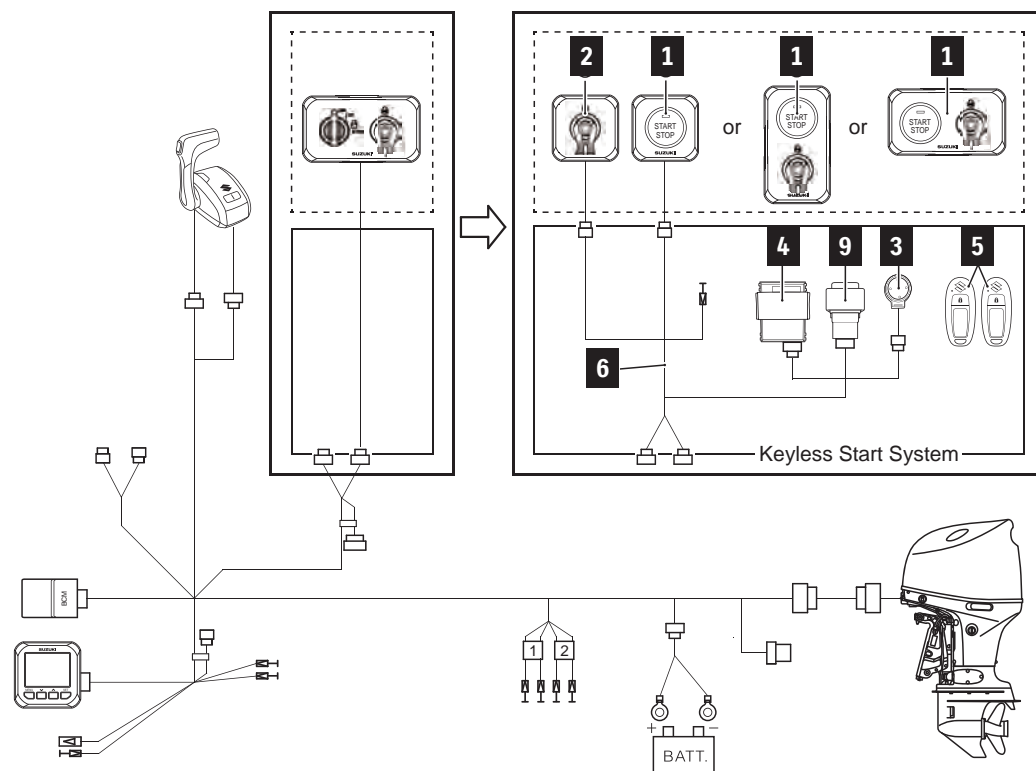
\*Only needed if using 37100-98L00



# INSTALLATION DIAGRAM

## KEYLESS START SYSTEM for Suzuki Precision Control or Mechanical Remote Control with CAN Connection

\*SMG4 or SMD is required to use



# COMPONENT PARTS



| PART NUMBER        | PART NAME                    | LENGTH | KIT            |                           | Total Required Quantity |      |        |      |
|--------------------|------------------------------|--------|----------------|---------------------------|-------------------------|------|--------|------|
|                    |                              |        | CONTROLLER SET | 37101-98L07-000 (433 MHz) | SINGLE                  | DUAL | TRIPLE | QUAD |
| 37290-98L00-000    | MAIN SWITCH PANEL            | -      | -              | -                         | -                       | -    | -      | -    |
| 1 37290-98L10-000  | MAIN SWITCH PANEL VERTICAL   | -      | -              | -                         | 1                       | 1    | 1      | 1    |
| 37290-98L20-000    | MAIN SWITCH PANEL HORIZONTAL | -      | -              | -                         | -                       | -    | -      | -    |
| 2 37803-98L00-000  | EMERGENCY SWITCH PANEL       | -      | -              | -                         | *1                      | *1   | *1     | *1   |
| 3 38500-93J90-000  | BUZZER                       | -      | 1              | 1                         | 1                       | 1    | 1      |      |
| 4 37171-98L02-000  | KEYLESS CONTROL UNIT         | -      | 1              | 1                         | 1                       | 1    | 1      |      |
| 37171-98L11-000    |                              | -      | 1              | 1                         | 1                       | 1    | 1      |      |
| 5 37172-96L03-000  | KEY FOB                      | -      | 2              | 2                         | 2                       | 2    | 2      |      |
| 37172-96L11-000    |                              | -      | 2              | 2                         | 2                       | 2    | 2      |      |
| 6 36623-98LA0-000  | KEYLESS CONTROL HARNESS      | -      | 1              | 1                         | 1                       | 1    | 1      |      |
| 9 38860-96L01-000  | RELAY ASSY, KLS              | -      | 1              | 1                         | 1                       | 1    | 1      |      |
| 10 37173-96L10-000 | HOLDER, KLS PARTS            | -      | 1              | 1                         | 1                       | 1    | 1      |      |
| 11 32980-38F00-000 | HOLDER                       | -      | 1              | 1                         | 1                       | 1    | 1      |      |
| 12 32851-93J00-000 | CUSHION                      | -      | 1              | 1                         | 1                       | 1    | 1      |      |
| - 09407-14407-000  | CLAMP, KLS HARNESS           | -      | 1              | 1                         | 1                       | 1    | 1      |      |
| - 37117-96L00-000  | DECAL, KLS                   | -      | 2              | -                         | -                       | -    | -      |      |

■ \*Used when using 37290-98L00-000.

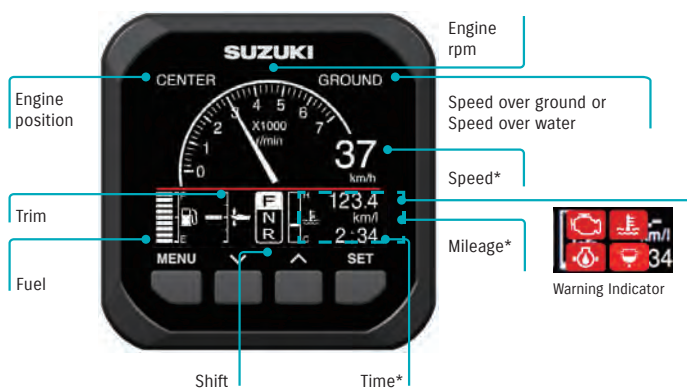
| PART NUMBER        | PART NAME                    | NOTE                            |
|--------------------|------------------------------|---------------------------------|
| 37290-98L00-000    | MAIN SWITCH PANEL            |                                 |
| 1 37290-98L10-000  | MAIN SWITCH PANEL VERTICAL   |                                 |
| 37290-98L20-000    | MAIN SWITCH PANEL HORIZONTAL |                                 |
| 2 37803-98L00-000  | EMERGENCY SWITCH PANEL       | Used when using 37290-98L00-000 |
| 3 38500-93J90-000  | BUZZER                       |                                 |
| 4 37171-98L02-000  | KEYLESS CONTROL UNIT         | 433MHz                          |
| 37171-98L11-000    |                              | 315MHz                          |
| 5 37172-96L03-000  | KEY FOB                      | 433MHz                          |
| 37172-96L11-000    |                              | 315MHz                          |
| 6 36623-98LA0-000  | KEYLESS CONTROL HARNESS      |                                 |
| 9 38860-96L01-000  | RELAY ASSY, KLS              |                                 |
| 10 37173-96L10-000 | HOLDER, KLS PARTS            |                                 |
| 11 32980-38F00-000 | HOLDER                       |                                 |
| 12 32851-93J00-000 | CUSHION                      |                                 |

\* Europe: 433MHz

# SUZUKI MULTI-FUNCTION GAUGE

The Suzuki Multi-function Gauge (SMG4) shows all the necessary information on one, user-friendly screen. Users can view a wide range of important information, including engine rpm, speed and trim angle, engine temp and fuel economy in and total fuel flow for multiple engine installations. The SMG4 also shows alerts from the engine's sensors and warning systems.

## ANALOGUE TACHO & SPEED MODE



## TACHO MODE



- Fuel flow (instantaneous)
- Mileage\* (instantaneous and average)
- Trip time, Trip distance\*
- Engine hour, Voltage, Water temp and more...

## TROLL MODE FUNCTION



- Allows you to control your troll mode from the Multi-Function Gauge

This function is available from year 2019 models. Can only be used by models which are adapted to troll mode.

\* Speed sensor or GPS module required.

|               | GPS Module | Speed sensor |
|---------------|------------|--------------|
| Speed         | ✓          | ✓            |
| Mileage       | ✓          | ✓            |
| Trip distance | ✓          | ✓            |
| Time          | ✓          | N/A          |

## DISPLAY MODES

### DIGITAL TACHO & SPEED MODE



### ANALOGUE SPEED MODE



\*Night mode screen

### FUEL MODE



## FEATURES

### Multilingual menu

SMG4 is available in 13 languages: English, French, Italian, German, Spanish, Swedish, Norwegian, Finnish, Dutch, Portuguese, Danish, Russian, Japanese.



### Automatic Trim

Automatically adjusts trim angle with OBM RPM

Remark: Automatic Trim function is only available for the models mentioned in page 16.



### Demo mode

Shows preinstalled data to demonstrate function of selected screen. (Ideal for boat shows and exhibitions)



# COMPONENT PARTS

**1** GAUGE ASSY,  
MULTI



**34011-96L44-000**

**2** WIRE COMP,  
EXTENSION



**2-1 990C0-88104-000**  
0.6m / 1.9ft

**2-2 990C0-88105-000**  
1.8m / 5.9ft

**3** HARNESS ASSY,  
NETWORK POWER



**990C0-88112-000**

**4** CONNECTOR COMP,  
BRANCH



**990C0-88110-000**

**5** UNIT COMP,  
RESISTOR FEMALE



**990C0-88113-000**

**6** UNIT COMP,  
RESISTOR MALE



**990C0-88114-000**

**7** WIRE COMP,  
GAUGE ADAPTER



**7-1 36667-96L40-000**

**7-2 36667-96L50-000**  
for Tank 3-4

**7-3 36667-96L11-000**  
for Mechanical  
Control

**8** SENSOR ASSY,  
PADDLE WHEEL



**990C0-88317-000**

GPS RECEIVER  
MODULE



**990C0-88122-000**

**9** WIRE COMP, GAUGE EXT (0.6m)

**36667-96L60-000**  
0.6 m / 1.9ft

**10** ADAPTER COMP, GAUGE

**36661-96L30-000**  
for Dual Engine

**11** ADAPTER,  
GAUGE FOR MULTI



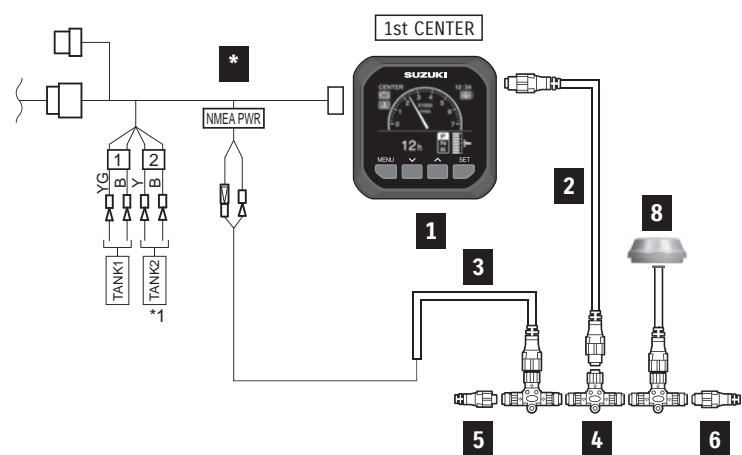
**36665-87L10-000**  
In addition to component of  
[MECHANICAL SINGLE]



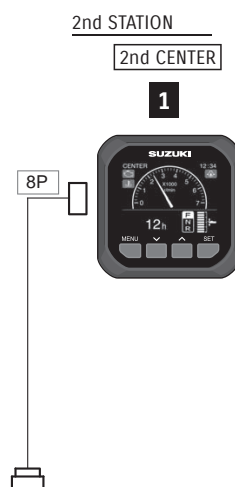
# INSTALLATION DIAGRAM

## SINGLE ENGINE with S.P.C or MECHANICAL CONTROL (CAN Connection)

### SINGLE STATION



### DUAL STATION (S.P.C only)



### TOTAL REQUIREMENT LIST

|             | For SINGLE ENGINE |                           |             | Total Required Quantity |                                   |                                    |  |                                 |                                  |
|-------------|-------------------|---------------------------|-------------|-------------------------|-----------------------------------|------------------------------------|--|---------------------------------|----------------------------------|
|             | PART NUMBER       | PART NAME                 | LENGTH      | SINGLE STATION          | SINGLE STATION (Speed over water) | SINGLE STATION (Speed over ground) | DUAL STATION   | DUAL STATION (Speed over water) | DUAL STATION (Speed over ground) |
| 1           | 34011-96L44-000   | GAUGE ASSY, MULTI         | -           | 1                       | 1                                 | 1                                  | 2  | 2                               | 2                                |
| -           | 36001-88L00-000   | CABLE KIT                 | -           | -                       | 1                                 | 1                                  | -  | 1                               | 1                                |
| 8           | 990C0-88317-000   | SENSOR ASSY, PADDLE WHEEL | -           | -                       | 1                                 | -                                  | -  | 1                               | -                                |
| -           | 990C0-88122-000   | GPS RECEIVER MODULE       | -           | -                       | -                                 | 1                                  | -  | -                               | 1                                |
| -           | 33926-98L00-000   | TERMINAL RESISTOR         | -           | 1                       | 1                                 | 1                                  | -  | -                               | -                                |
| *S.P.C      | 36623-98L00-000   | BCM HARNESS No.1          | -           | 1                       | 1                                 | 1                                  | 1  | 1                               | 1                                |
| -           | 36624-98L00-000   | BCM HARNESS No.2          | -           | -                       | -                                 | -                                  | 1  | 1                               | 1                                |
| *Mechanical | 36620-93JA0-000   | MAIN WIRING HARNESS       | 6.5m/21.3ft | 1                       | 1                                 | 1                                  | Dual station is not applicable for Mechanical Control. |                                 |                                  |
| -           | 36620-93JB0-000   |                           | 5.0m/16.4ft |                         |                                   |                                    |  |                                 |                                  |
| -           | 36620-93JC0-000   |                           | 8.0m/26.2ft |                         |                                   |                                    |  |                                 |                                  |

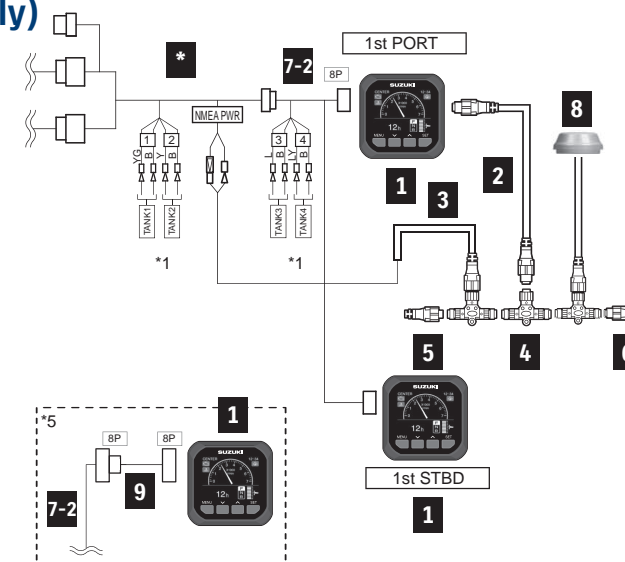
\* BCM Harness No.1 & 2 ⇒ S.P.C. See page 11.  
Main Wiring Harness ⇒ Mechanical Control (CAN Connection). See page 21.

### CABLE KIT COMPONENT

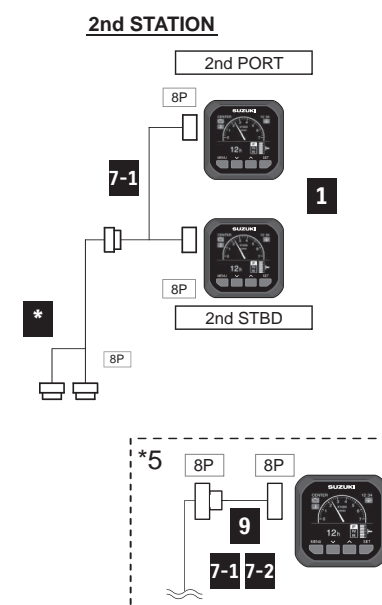
| PART NUMBER       | PART NAME                   | LENGTH | Quantity |
|-------------------|-----------------------------|--------|----------|
| 36001-88L00-000   | CABLE KIT                   | -      | -        |
| 2 990C0-88104-000 | WIRE COMP, EXTENSION        | 0.6m   | 1        |
| 3 990C0-88112-000 | HARNESS ASSY, NETWORK POWER | -      | 1        |
| 4 990C0-88110-000 | CONNECTOR COMP, BRANCH      | -      | 1        |
| 5 990C0-88113-000 | UNIT COMP, RESISTOR FEMALE  | -      | 1        |
| 6 990C0-88114-000 | UNIT COMP, RESISTOR MALE    | -      | 1        |

## DUAL ENGINE with S.P.C or MECHANICAL CONTROL (CAN Connection)

### SINGLE STATION (S.P.C only)



### DUAL STATION (S.P.C only)

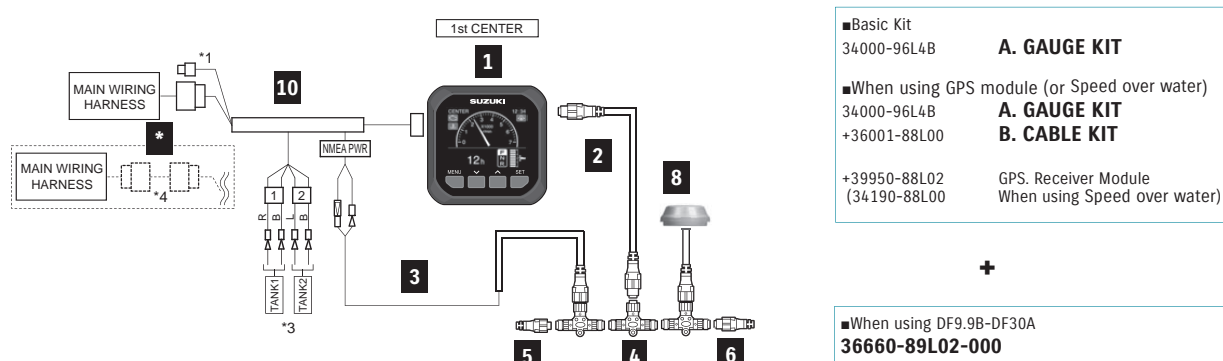


### TOTAL REQUIREMENT LIST

|             | For DUAL ENGINE |  |             | Total Required Quantity |                                   |                                    |  |                                 |                                  |
|-------------|-----------------|--|-------------|-------------------------|-----------------------------------|------------------------------------|--|---------------------------------|----------------------------------|
|             | PART NUMBER     | PART NAME                              | LENGTH      | SINGLE STATION          | SINGLE STATION (Speed over water) | SINGLE STATION (Speed over ground) | DUAL STATION   | DUAL STATION (Speed over water) | DUAL STATION (Speed over ground) |
| 1           | 34011-96L44-000 | GAUGE ASSY, MULTI                      | -           | 2                       | 2                                 | 2                                  | 4  | 4                               | 4                                |
| -           | 36001-88L00-000 | CABLE KIT                              | -           | -                       | 1                                 | 1                                  | -  | 1                               | 1                                |
| 8           | 990C0-88317-000 | SENSOR ASSY, PADDLE WHEEL              | -           | -                       | 1                                 | -                                  | -  | 1                               | -                                |
| -           | 990C0-88122-000 | GPS RECEIVER MODULE                    | -           | -                       | -                                 | 1                                  | -  | -                               | 1                                |
| 9           | 36667-96L60-000 | WIRE COMP, GAUGE EXT                   | -           | -                       | -                                 | -                                  | Optional   |                                 |                                  |
| -           | 33926-98L00-000 | TERMINAL RESISTOR                      | -           | 1                       | 1                                 | 1                                  | -  | -                               | -                                |
| *S.P.C      | 36667-96L40-000 | WIRE COMP, GAUGE ADAPTER               | -           | Select 1                |                                   |                                    | 2**  |                                 |                                  |
| -           | 36667-96L50-000 | WIRE COMP, GAUGE ADAPTER (FOR TANK3-4) | -           | Select 1                |                                   |                                    | 2**  |                                 |                                  |
| -           | 36623-98L30-000 | BCM HARNESS No.1                       | -           | 1                       | 1                                 | 1                                  | 1  | 1                               | 1                                |
| -           | 36624-98L10-000 | BCM HARNESS No.2                       | -           | -                       | -                                 | -                                  | 1  | 1                               | 1                                |
| *Mechanical | 36620-93JA0-000 | MAIN WIRING HARNESS                    | 6.5m/21.3ft | 2                       | 2                                 | 2                                  | Dual station is not applicable for Mechanical Control. |                                 |                                  |
| -           | 36620-93JB0-000 |  | 5.0m/16.4ft |                         |                                   |                                    |  |                                 |                                  |
| -           | 36620-93JC0-000 |  | 8.0m/26.2ft |                         |                                   |                                    |  |                                 |                                  |
| -           | 36665-87L10-000 | ADAPTER, GAUGE FOR MULTI               | -           | 1***                    | 1***                              | 1***                               | -  | -                               | -                                |

\* BCM Harness No.1 & 2 ⇒ S.P.C. See page 11.  
Main Wiring Harness ⇒ Mechanical Control (CAN Connection). See page 21.  
\*\* 36667-96L40 x 1 + 36667-96L50 x 1 or 36667-96L40 x 2  
\*\*\* Please refer to Rigging Manual for installation.

## SINGLE ENGINE with MECHANICAL CONTROL (Non-CAN Connection)

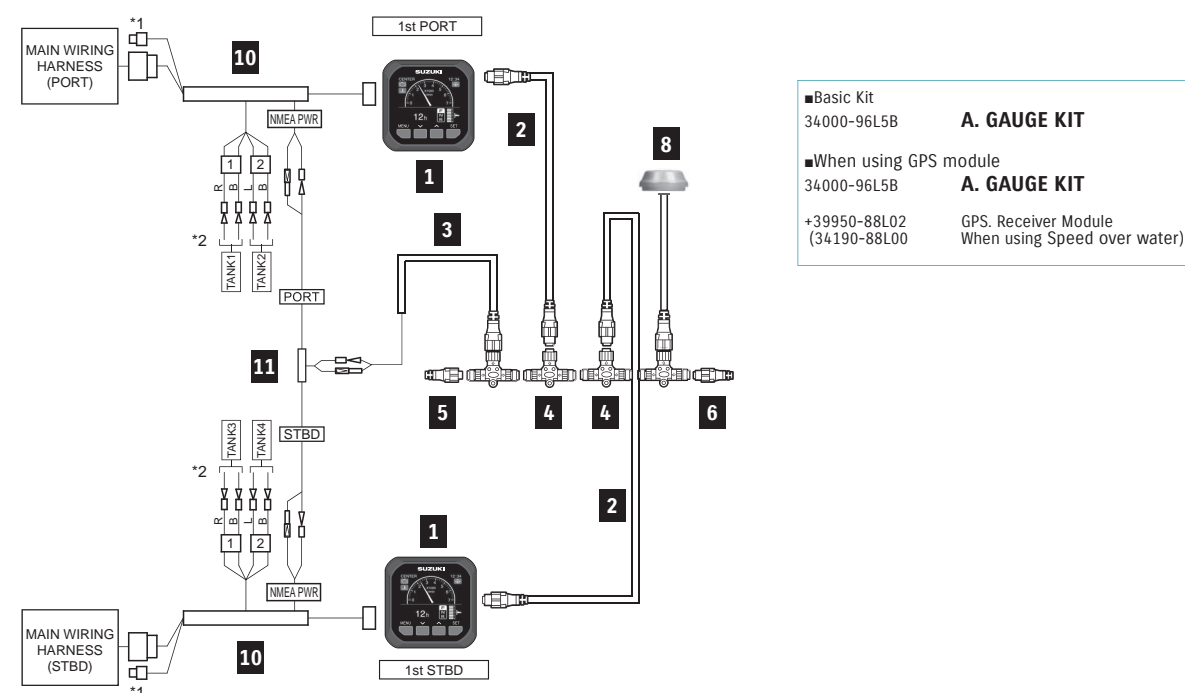


| For MECHANICAL CONTROL & SINGLE ENGINE |                 |                            | KIT                             |                                 | Total Required Quantity |
|--|-----------------|----------------------------|---------------------------------|---------------------------------|-------------------------|
| PART NUMBER                            | PART NAME       | LENGTH                     | A. GAUGE KIT<br>34000-96L4B-000 | B. CABLE KIT<br>36001-88L00-000 | A (+ B) <>              |
| 1                                      | 34011-96L44-000 | GAUGE ASSY, MULTI          | 1                               | -                               | 1                       |
| 2-1                                    | 990C0-88104-000 | WIRE COMP, EXTENSION       | -                               | 1                               | (1)                     |
| 2-2                                    | 990C0-88105-000 | WIRE COMP, EXTENSION       | -                               | -                               | -                       |
| 3                                      | 990C0-88112-000 | HARNES ASSY, NETWORK POWER | -                               | 1                               | (1)                     |
| 4                                      | 990C0-88110-000 | CONNECTOR COMP, BRANCH     | -                               | 1                               | (1)                     |
| 5                                      | 990C0-88113-000 | UNIT COMP, RESISTOR FEMALE | -                               | 1                               | (1)                     |
| 6                                      | 990C0-88114-000 | UNIT COMP, RESISTOR MALE   | -                               | 1                               | (1)                     |
| 8                                      | 990C0-88317-000 | SENSOR ASSY, PADDLE WHEEL  | -                               | -                               | (1)                     |
|  | 990C0-88122-000 | GPS RECEIVER MODULE        | -                               | -                               | (1)                     |
| 10                                     | 36661-96L30-000 | ADAPTER COMP, GAUGE        | 1                               | -                               | 1                       |
| *                                      | 36660-89L02-000 | SET, ENG TO INTERFACE WIRE | -                               | -                               | <1>                     |

■ \*( ) parts are required when using GPS module or Speed sensor.  
■ \* < > part are required when using with DF9.9B to 30A.



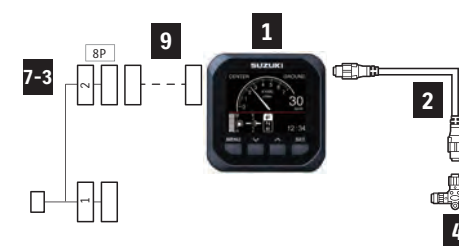
## DUAL ENGINE with MECHANICAL CONTROL (Non-CAN Connection)



| For MECHANICAL CONTROL & DUAL ENGINE |                 |                            | KIT                             | Total Required Quantity |
|--------------------------------------|-----------------|----------------------------|---------------------------------|-------------------------|
| PART NUMBER                          | PART NAME       | LENGTH                     | A. GAUGE KIT<br>34000-96L5B-000 | A (+ 8)                 |
| 1                                    | 34011-96L44-000 | GAUGE ASSY, MULTI          | 2                               | 2                       |
| 2-1                                  | 990C0-88104-000 | WIRE COMP, EXTENSION       | 2                               | 2                       |
| 2-2                                  | 990C0-88105-000 | WIRE COMP, EXTENSION       | -                               | -                       |
| 3                                    | 990C0-88112-000 | HARNES ASSY, NETWORK POWER | 1                               | 1                       |
| 4                                    | 990C0-88110-000 | CONNECTOR COMP, BRANCH     | 2                               | 2                       |
| 5                                    | 990C0-88113-000 | UNIT COMP, RESISTOR FEMALE | 1                               | 1                       |
| 6                                    | 990C0-88114-000 | UNIT COMP, RESISTOR MALE   | 1                               | 1                       |
| 8                                    | 990C0-88317-000 | SENSOR ASSY, PADDLE WHEEL  | -                               | (1)                     |
|                                      | 990C0-88122-000 | GPS RECEIVER MODULE        | -                               | (1)                     |
| 10                                   | 36661-96L30-000 | ADAPTER COMP, GAUGE        | 2                               | 2                       |
| 11                                   | 36665-87L10-000 | ADAPTER, GAUGE FOR MULTI   | 1                               | 1                       |

■ \*( ) parts are required when using GPS module or Speed sensor.

## ADDITIONAL GAUGE COMPONENTS (MECHANICAL)



| ADDITIONAL GAUGE COMPONENTS (MECHANICAL) |                 |                               |      | Total Required Quantity |
|--|-----------------|-------------------------------|------|-------------------------|
| PART NUMBER                              | PART NAME       | LENGTH                        |      |                         |
| 1  | 34011-96L44-000 | GAUGE ASSY, MULTI             | -    | 1                       |
| 2-1                                      | 990C0-88104-000 | WIRE COMP, EXTENSION          | 0.6m | 1                       |
| 2-2                                      | 990C0-88105-000 | WIRE COMP, EXTENSION          | 1.8m | 1                       |
| 4  | 990C0-88110-000 | CONNECTOR COMP, BRANCH        | -    | 1                       |
| 7-3                                      | 36667-96L11-000 | WIRE COMP, DUAL GAUGE ADAPTER | -    | 1                       |
| 9  | 36667-96L60-000 | WIRE, GAUGE EXT               | 0.6m | (1)                     |

Please use "36667-96L60-000 WIRE, GAUGE EXT" as an extension between "34011-96L45" and "36667-96L11"



## FishHunter™ Drive

The FishHunter™ Drive is a feature for Furuno NAVpilot-300 Autopilot, developed exclusively for Suzuki Drive-By-Wire engines. With a simple software update, it offers enhanced autopilot and engine controls which anglers will find highly valuable while jigging or trolling. It is available for configurations of up to 4 engines.



The following items are required to use the FishHunter™ Drive:

| Supplier | Product                                    |             | Note                                       |
|----------|--|-------------|--|
| SUZUKI   | Outboard Motor (DBW models from Year 2022) |             |  |
|          | Gateway                                    | 34923-96L13 |  |
|          | Boat Control Module (BCM)                  | 36770-98L04 | Included in the DBW kits. See pages 10-17. |
| Furuno   | NAVpilot-300                               |             |  |
|          | SATELLITE COMPASS™ / GPS + Heading Sensor  |             |  |
|          | Furuno multi function display              |             | Display is required for Route Smoothing™.  |

## FEATURES



### Speed Control

The boat will maintain a preset speed by adjusting engine RPM.



### Route Smoothing™

Automatically controls the speed at waypoints for smooth turns while navigating a designated route. On approach to the final waypoint, the boat will slow down and activate Point Lock™ automatically to hold on the destination.



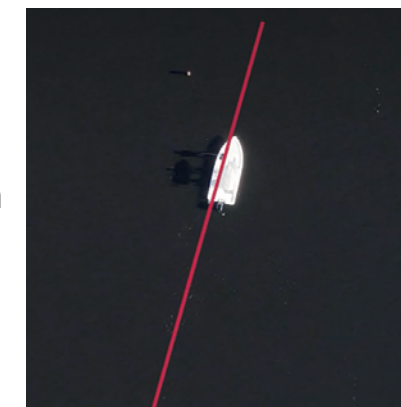
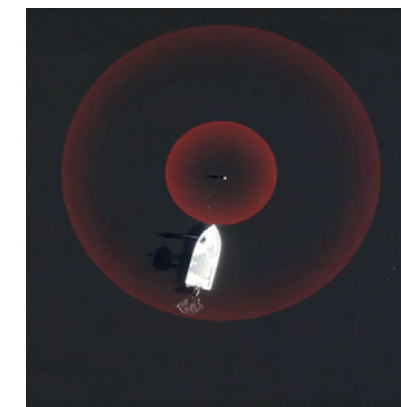
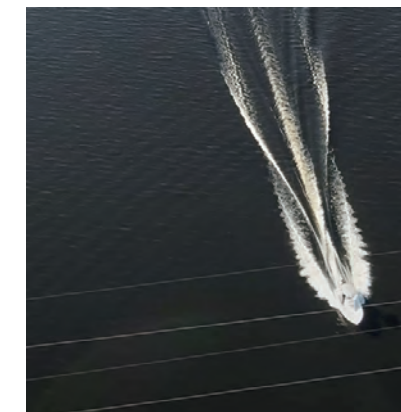
### Point Lock™

Allows the vessel to easily keep a fixed position by controlling the steering and shift, limiting the effects of wind and current.



### SABIKI™ Lock

Expands upon the NAVpilot-300's SABIKI™ function by controlling both the steering and throttle to maintain stern direction, freeing the angler to focus on jigging and other vertical fishing.





# SUZUKI DIAGNOSTIC SYSTEM MOBILE PLUS

The **Suzuki Diagnostic System Mobile Plus (SDSM+)** is an app that combines the existing functions of the former SDSM app with new, unique features to support our customer's marine life and experience. With a few screen taps and a simple QR code scan, this app guides customers from boat day planning, all the way to their next maintenance session. The SDSM+ is free of charge and available for anyone with a working smartphone.



## What can SDSM+ Do?

- Provide boating condition forecasts all in one screen.
  - Guide customer through pre-departure inspection.
  - Receive and display engine condition by scanning a QR code. The app also allows the customer to send this data to their dealer by e-mail.\*
- \*SMG4 (Page 34) or SMD is necessary for this feature.

Find out more at global website here!

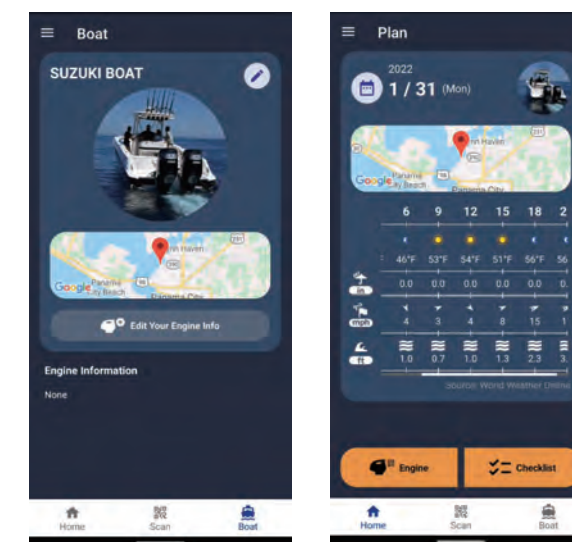


Or go to [https://www.globalsuzuki.com/marine/sdsm\\_plus/](https://www.globalsuzuki.com/marine/sdsm_plus/)

\*QR Code is a registered trademark of DENSO WAVE.

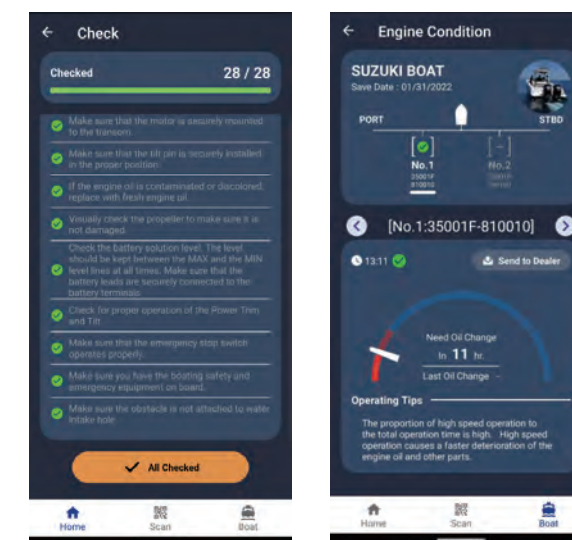
## Before the departure day

Customer will first register their boat and engine(s) information on to the app. Then, customer can select a boating date and destination to check the weather forecast.



## On the departure day

The app will show a pre-departure checklist to inspect the boat and engine(s). Customer can also scan the QR code on the SMG4 or SMD to check engine condition data. The app will also provide operating tips based on piloting tendencies.



## After the boating

Customer can scan the QR code again to check the latest engine condition. After checking, the customer can e-mail the data to an authorized Suzuki dealer. The dealer can use this data to prepare for the customer's next maintenance session.



The SDSM+ app is subject to updates and other changes. Images on this catalogue may differ from the actual screen.



# ANALOGUE INSTRUMENT

## TACHOMETER



White



Black



White



Black



White



Black

**34200-93J14-000** (White)

**34200-93J02-000** (Black)

Gauge Size 4" (101.6mm)

Applicable Model DF25A-250

Caution system alert with a monitor lamp lighting on when an abnormal engine condition occurs. Refer to SERVICE MANUAL for the detail.

**34200-93J54-000** (White)

**34200-93J43-000** (Black)

Gauge Size 4" (101.6mm)

Applicable Model DF40A-200A

Exclusive for SUZUKI Troll Mode System. Automatically switches to low RPM scale when the SUZUKI Troll Mode System is activated.

**34200-93J34-000** (White)

**34200-93J22-000** (Black)

Gauge Size 4" (101.6mm)

Applicable Model DF8A-30A

Full-scale 7000-RPM TACHOMETER can be used on electric-start models by using 4, 6 or 12 pole switch on rear of meter.

## TRIM GAUGE



White



Black

**34800-93J13-000** (White)

**34800-93J02-000** (Black)

Gauge Size 2" (50.8mm)

Applicable Model DF25A-250

Magnetic-type gauge shows trim angle for optimum performance and efficiency.

## FUEL GAUGE



White



Black

**34300-93J14-000** (White)

**34300-93J03-000** (Black)

Gauge Size 2" (50.8mm)

FUEL GAUGE alone works with the US Standard 240-30Ω sending unit.

## HOUR METER



White



Black

**34500-93J13-000** (White)

**34500-93J02-000** (Black)

Gauge Size 2" (50.8mm)

Applicable Model DF9.9B-250  
12-Volt-electric-motor driven meter.

## SPEEDOMETER

\*Each speedometer includes vinyl tube, hard ware, and installation manual.



White



Black

(White)

(Black)

**34100-93J13-000** **34100-93J02-000**

Gauge Size 4" (101.6mm)

Maximum Speed 130km/h, 80mph

Bourdon-tube type speedometer with readings in km/h and mph.



White



Black

(White)

(Black)

**34100-93J33-000** **34100-93J22-000**

Gauge Size 4" (101.6mm)

Maximum Speed 80km/h, 50mph

Bourdon-tube type speedometer with readings in km/h and mph.



White



Black

(White)

(Black)

**34100-93J53-000** **34100-93J42-000**

Gauge Size 4" (101.6mm)

Maximum Speed 80km/h, 40knots

Bourdon-tube type speedometer with readings in km/h and knots.



**34100-93J62-000**

Gauge Size 4" (101.6mm)

Background White

Maximum Speed 120km/h, 65knots

Bourdon-tube type speedometer with readings in km/h and knots.

## SPEEDOMETER SENDER ASSY



**34190-95500-000**



**34190-87D00-000**

## VOLTMETER



White



Black

**34600-93J13-000** (White)

**34600-93J02-000** (Black)

Gauge Size 2" (50.8mm)

Applicable Model DF9.9B-250

## WATER-PRESSURE GAUGE



White



Black

**34650-93J33-000** (White)

**34650-93J22-000** (Black)

Gauge Size 2" (50.8mm)

Applicable Model DF40A-250

Select an appropriate INSTALLATION KIT for each model.

## INSTALLATION KIT for WATER-PRESSURE GAUGE



**34660-90J04-000**

Applicable Model DF40A-140B

**34660-96J01-000**

Applicable Model DF150A/175A/200A

**34660-93J02-000**

Applicable Model DF200-250





# STEERING

## TILLER HANDLE KIT



**63002-88L2A-YAY**  
Applicable Model  
DF40A/50A

**63002-88L18-YAY**  
Applicable Model  
DF60A/50AV/60AV

**63002-87L20-YAY**  
Applicable Model  
DF70A-90A/100B  
(Year 2022~)

**63002-99L00-YAY**  
Applicable Model  
DF100C/115BT

## Main features



**Tachometer with warning indicators**



**Three-position angle adjustable bracket**



**Troll mode switch**

- Activates SUZUKI Troll Mode System and controls RPM from idling engine speed up to 1200rpm at every 50rpm.



**Power trim & tilt switch and throttle grip friction adjuster**



## DUAL-ENGINE TIE-BAR



**67600-90J00-000**  
Stainless steel  
Applicable Model DF100C-140B

**67600-99L00-000**  
Stainless steel  
Applicable Model DF115BG/140BG

**67600-93J00-000**  
Stainless steel  
Applicable Model DF150A-200A/  
200-250  
DF150AP-200AP

## STEERING EXTENSION KIT



**67630-93J00-000**  
for installation of DUAL-ENGINE TIE-BAR  
(67600-93J00-000)  
Applicable Model DF150A-200A/200-250

## DRAG-LINK KIT \*67700- includes Steering Cable Seal



**67700-87L10-000**  
Applicable Model DF70A-90A/100B  
(Year 2022~)

**67700-93J00-000**  
Applicable Model DF40A-60A/  
200-250

**67700-96J00-000**  
Applicable Model DF150A-200A/  
150AP-200AP

**67701-87J11-000**  
Applicable Model DF40A-60A/  
200-250

**67701-87L10-000**  
Applicable Model DF70A-90A/100B  
(Year 2022~)

**67701-90J01-000**  
Applicable Model DF100C-140B

**67701-96J00-000**  
Applicable Model DF150A-200A/  
150AP-200AP

**67701-94L00-000**  
Applicable Model DF25A/30A

**67701-99J02-000**  
Applicable Model DF8A-DF20A

## STEERING-BRACKET ATTACHMENT



**43755-87L00-000**  
Applicable Model DF70A-90A/100B

**43755-88L00-000**  
Applicable Model DF40A-60A

**43755-94L00-000**  
Applicable Model DF25A-30A

**43755-99J01-000**  
Applicable Model DF8A-20A

## STEERING CABLE SEAL

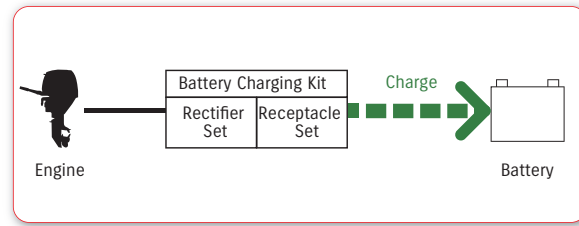


**41161-94400-000**  
Applicable Model DF8A-250

# ELECTRICAL PARTS

## BATTERY CHARGING KIT

Optional equipment for charging Battery

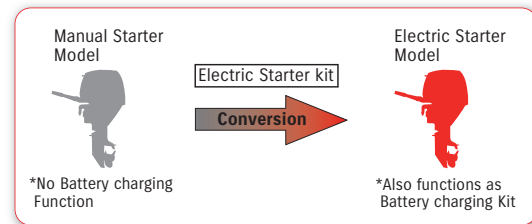


| APPLICABLE MODEL | BATTERY CHARGING KIT<br>└ RECTIFIER and REGULATOR SET<br>└ RECEPTACLE KIT  |
|------------------|--|
| DF4A/5A/6A       | 32000-97L10-000<br>└ 32801-97L01-000<br>└ 39600-97L10-000  |
| DF8A/9.9A        | 32000-99J03-000<br>└ 32801-95J03-000<br>└ 39600-94J03-000  |
| DF9.9B/15A/20A   | 32000-89L03-000<br>└ 32801-89L01-000<br>└ 39600-89L02-000  |
| DF25A/30A        | 32000-94L03-000<br>└ 32800-88L01-000<br>└ 39600-94L01-000<br>└ 32815-94L01-000 (BRACKET)<br>└ 01550-06207-000 (BOLT) |



## ELECTRIC STARTER KIT

\* Electric Starter Kit functions as Battery charging Kit as well.



| APPLICABLE MODEL | ELECTRIC STARTER KIT   |
|------------------|--|
| DF8A/9.9A        | 31000-99J11-000  |
| DF25A/30A        | 31000-94L09-000  |
| DF9.9B/15A/20A   | 31000-89L09-000 (~Year 2017)<br>31000-89L23-000 (Year 2018~)   |
|                  | DF9.9B 33930-89L40-000<br>DF15A 33930-89L00-000<br>DF20A 33930-89L20-000<br>DF20A(P40) 33930-89L60-000 |

\*When fitting to a non-Electric Starter model, please ensure to also replace the ECM with the ones shown here.

## BATTERY ISOLATOR LEAD SET

Optional equipment for charging additional battery.

### 33830-98J11-000

Applicable Model DF150A-200A/  
150AP-300AP/  
325A/350A/  
300BMD/350AMD



# SUZUKI MULTI-FUNCTION DISPLAY



**34901-98L41-000**  
SET, MULTI DISPLAY 7

## Necessary items for installation

| For SMD7  |  | Reference  |  |
|---|--|--|--|
| PART NAME   | PART NUMBER  | Installing a SMD7 to SPC Single Engine/Station 22MY- | SET, MULTI DISPLAY 7 34901-98L41-000<br>Components |
| 34902-98L41-000   | DISPLAY ASSY, MULTI 7                                  | 1  | 1  |
| 36665-87L10-000<br>(For MECHANICAL CONTROL & DUAL EN)                                     | ADAPTER, GAUGE FOR MULTI                               | -  | -  |
| 990C0-88104-000   | WIRE COMP, EXTENSION 0.6m                              | 1  | 1  |
| 36663-88L20-000*  | HARNESS ASSY, NETWORK POWER                            | 1  | 1  |
| 990C0-88112-000   | HARNESS ASSY, NETWORK POWER WITH CONNECTOR BRANCH      | -  | -  |
| 990C0-88110-000   | CONNECTOR COMP, BRANCH                                 | 3  | 3  |
| 990C0-88113-000   | UNIT COMP, RESISTOR FEMALE                             | 1  | 1  |
| 990C0-88114-000   | UNIT COMP, RESISTOR MALE                               | 1  | 1  |
| 990C0-88107-000<br>990C0-88108-000  | WIRE COMP, EXTENSION 4.7m<br>WIRE COMP, EXTENSION 7.6m | -  | -  |
| 36667-96L20-000   | WIRE, GAUGE EXT (OPTION)                               | -  | -  |
| 36661-96L30-000<br>(For MECHANICAL CONTROL)<br>36661-96L20-000<br>(For SPC before 2021MY) | ADAPTER COMP, GAUGE                                    | -  | -  |
| 36667-96L00-000   | WIRE COMP, GAUGE ADAPTER                               | -  | -  |
| 34923-96L01-000   | UNIT COMP, GATEWAY                                     | 1**  | 1  |

\* Kit component item. For spare parts supply, please order 990C0-88112-000.

\*\* For an appropriate Gateway, please refer to the chart below.

## Please check your required Gateway along with your OBM

| Model   | SPC or MECH | 21MY              | 22MY        | 23MY | 24MY | 25MY        |
|---------|-------------|-------------------|-------------|------|------|-------------|
| DF20A   | MECH        | 34923-96L01 or up |             |      |      |             |
| DF30A   | MECH        | 34923-96L01 or up |             |      |      |             |
| DF60A   | MECH        | 34923-96L01 or up |             |      |      | 34923-96L13 |
| DF100B  | MECH        | 34923-96L01 or up |             |      |      | 34923-96L13 |
| DF140B  | MECH        | 34923-96L01 or up |             |      |      | 34923-96L13 |
| DF140BG | SPC         | 34923-96L01 or up | 34923-96L13 |      |      |             |
| DF200A  | MECH        | 34923-96L01 or up |             |      |      | 34923-96L13 |
| DF200AP | SPC         | 34923-96L01 or up | 34923-96L13 |      |      |             |
| DF250   | MECH        | 34923-96L01 or up |             |      |      | 34923-96L13 |
| DF300AP | SPC         | 34923-96L01 or up | 34923-96L13 |      |      |             |
| DF350A  | SPC         | 34923-96L01 or up | 34923-96L13 |      |      |             |

\* If using 34923-96L13-000, please make sure to use CAN Connection Main Wiring Harness. See page 21.

# FUEL SYSTEM

## FUEL TANK

NOTE : These tanks do not meet US-EPA requirements.



### 65000-99100-000

12-liter plastic tank without fuel-level gauge

Applicable Model DF4A/5A/6A

### 65000-94L10-000

25-liter plastic tank with a fuel-level gauge

Applicable Model DF8A-140B

### 65000-89L10-000

12-liter plastic tank

Applicable Model DF4A-20A

## REPLACEMENT FUEL CAP

NOTE : Not US-EPA compatible.

### 65520-99100-000

Applicable Model DF5A-20A/R

## FUEL-HOSE SOCKET



### 65750-98506-000

Metal, Inner diameter: 11.2 mm

Applicable Model DF4A-20A/R



### 65750-87J11-000

Plastic, Inner diameter: 6.6 mm

Applicable Model DF4A/8A-30A



### 65750-95501-000

Metal, Inner diameter: 13.0 mm

Applicable Model DF8A/R-140B

## FUEL CONNECTOR



### 65720-986L0-000

Engine side, Plastic

Applicable Model DF4A



### 65740-95D01-000

Tank side, Outer diameter: 13 mm, 1/4"NPT

Applicable Model DF8A/R-140B

## SQUEEZE PUMP



### 65770-90J13-000

Large-in & Large-out

Applicable Model DF8A-20A/40A-140B

### 65770-93J13-000

Large-in & Large-out

Applicable Model DF150A-350A

### SQUEEZE PUMP

(US-EPA compatible.)

### 65770-90J04-000

Large-in & Large-out

Applicable Model DF8A-140B

## FUEL-HOSE

### 09352-73124-00D

I/D 7.3 , O/D 12.5

LENGTH 4,000mm

Not US-EPA compatible

## FUEL-HOSE COMPONENT



### 65700-87J19-000

for 25-liter plastic tank to engine

Applicable Model DF8A-20A

### 65700-90J18-000

for 25-liter plastic tank to engine

Applicable Model DF40A-60A

### 65700-90J24-000

for 25-liter plastic tank to engine

Applicable Model DF70A-140B

### 65700-93J14-000

for fuel tank to engine

Applicable Model DF150A-350A

### FUEL-HOSE COMPONENT

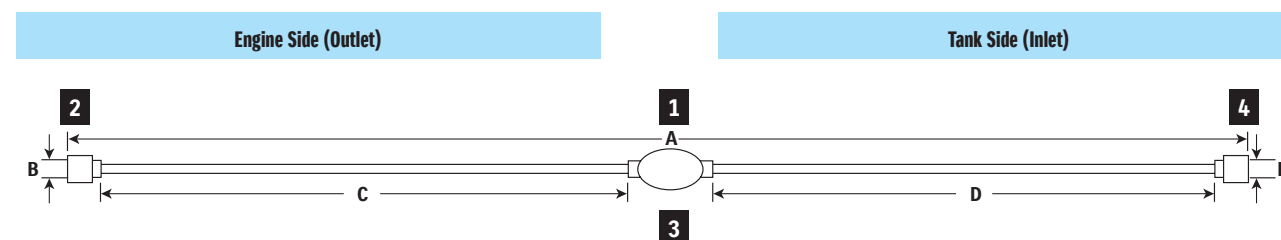
(US-EPA compatible.)

### 65700-87J28-000

Applicable Model DF5A-30A

### 65700-88L06-000

Applicable Model DF40A-60A



## FUEL-HOSE COMPONENT Chart

| 1                   | 2                | 3            | 4                |
|---------------------|------------------|--------------|------------------|
| FUEL-HOSE COMPONENT | FUEL-HOSE SOCKET | SQUEEZE PUMP | FUEL-HOSE SOCKET |
|                     | Metal            | Plastic      | Metal            |

| 1<br>FUEL HOSE COMPONENT | 2<br>SOCKET |               | HOSE     |                 |             | 3<br>SQUEEZE PUMP | HOSE          |                 |          | 4<br>SOCKET   |          |          |             |                 |
|--------------------------|-------------|---------------|----------|-----------------|-------------|-------------------|---------------|-----------------|----------|---------------|----------|----------|-------------|-----------------|
|                          | Part Number | A Length (mm) | Material | B I/D (mm)      | Part Number |                   | C Length (mm) | I/D (mm)        | O/D (mm) | D Length (mm) | I/D (mm) | O/D (mm) | Material    | E I/D (mm)      |
| 65700-87J19-000          | 1970        | Plastic       | 6.6      | 65750-87J11-000 | 700         | 7.3               | 12.5          | 65770-90J13-000 | 1100     | 7.3           | 12.5     | Metal    | 13.0        | 65750-95501-000 |
| 65700-90J18-000          | 1250        | (no socket)   | -        | -               | (no hose)   | -                 | -             | 65770-90J13-000 | 1100     | 7.3           | 12.5     | Metal    | 13.0        | 65750-95501-000 |
| 65700-90J24-000          | 1930        | (no socket)   | -        | -               | 700         | 7.3               | 12.5          | 65770-90J13-000 | 1100     | 7.3           | 12.5     | Metal    | 13.0        | 65750-95501-000 |
| 65700-93J14-000          | 3100        | (no socket)   | -        | -               | 750         | 9.0               | 15.0          | 65770-93J13-000 | 2250     | Large         | 9.0      | 15.0     | (no socket) | -               |
| 65700-87J28-000          | 2000        | Plastic       | 6.6      | 65750-87J11-000 | 700         | 7.3               | 12.5          | 65770-90J03-000 | 1100     | 7.3           | 12.5     | Metal    | 13.0        | 65750-95501-000 |
| 65700-88L06-000          | 1280        | (no socket)   | -        | -               | (no hose)   | -                 | -             | 65770-90J03-000 | 1100     | 7.3           | 12.5     | Metal    | 13.0        | 65750-95501-000 |

## WATER SEPARATOR / FUEL FILTER



### 65900-98J11-000

Applicable Model DF5A-DF140B

### 65900-98J21-000

Applicable Model DF150A-DF350A

## WATER SEPARATOR/FUEL FILTER ELEMENT SET



### 65910-98J01-000

Applicable Model DF5A-DF350A



# SUZUKI PROPELLERS

## WATERGRIP

WATERGRIP is a stainless-steel propeller series offering accurate response to User operation. Converting engine power into propulsion with high efficiency, this propeller series meets our customer's demand for bigger, faster, more powerful outboards. The WATERGRIP propeller series employs a new interchangeable and square shaped propeller bush that minimises power loss in delivery.

\*This picture was taken remotely

### WATERGRIP



The WATERGRIP series will be the new standard for Suzuki propellers. The interchangeable square-shaped bush system is designed for quick and easy replacement when required, and also accurately and efficiently converts power from the engine to thrust through the propeller.

### WATERGRIP DUAL



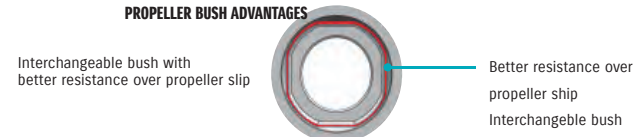
Our flagship models, the DF350A, DF325A and DF300B, introduced the Suzuki Dual Prop System, an industry-leading technology, which delivers outstanding and exciting performance. The two contra-rotating propellers, operating simultaneously, enables greater conversion efficiency as well as better stability, grip, and manoeuvrability.

### WATERGRIP SPORT



The WATERGRIP SPORT propellers feature a high rake blade design for excellent acceleration and exceptional top speed. These propellers are ideal for lightweight sports boats as they give remarkably stable thrust when turning for superior manoeuvrability.

#### PROPELLER BUSH ADVANTAGES



Applicable Model : DF150/150AP, DF175/DF175AP, DF200/DF200AP, DF225, DF250/DF250AP, DF300AP

| Type            | Material  | Blade | Diameter |         | Pitch  |         | Rotation* | Part number     |
|-----------------|-----------|-------|----------|---------|--------|---------|-----------|-----------------|
|                 |           |       | in       | (mm)    | in     | (mm)    |           |                 |
| Watergrip       | Stainless | 3     | 16       | (406.4) | 15     | (381)   | RR        | 58700-93L81-000 |
| Watergrip       | Stainless | 3     | 16       | (406.4) | 17     | (431.8) | RR        | 58700-93L01-000 |
| Watergrip       | Stainless | 3     | 16       | (406.4) | 18 1/2 | (469.9) | RR        | 58700-93L11-000 |
| Watergrip       | Stainless | 3     | 16       | (406.4) | 20     | (508)   | RR        | 58700-93L21-000 |
| Watergrip       | Stainless | 3     | 16       | (406.4) | 21 1/2 | (546.1) | RR        | 58700-93L31-000 |
| Watergrip       | Stainless | 3     | 16       | (406.4) | 23     | (584.2) | RR        | 58700-93L41-000 |
| Watergrip       | Stainless | 3     | 16       | (406.4) | 24 1/2 | (622.3) | RR        | 58700-93L51-000 |
| Watergrip       | Stainless | 3     | 16       | (406.4) | 26     | (660.4) | RR        | 58700-93L61-000 |
| Watergrip       | Stainless | 3     | 16       | (406.4) | 27 1/2 | (698.5) | RR        | 58700-93L70-000 |
| Watergrip       | Stainless | 3     | 16       | (406.4) | 17     | (431.8) | CR        | 58800-93L00-000 |
| Watergrip       | Stainless | 3     | 16       | (406.4) | 18 1/2 | (469.9) | CR        | 58800-93L10-000 |
| Watergrip       | Stainless | 3     | 16       | (406.4) | 20     | (508)   | CR        | 58800-93L20-000 |
| Watergrip       | Stainless | 3     | 16       | (406.4) | 21 1/2 | (546.1) | CR        | 58800-93L30-000 |
| Watergrip       | Stainless | 3     | 16       | (406.4) | 23     | (584.2) | CR        | 58800-93L40-000 |
| Watergrip       | Stainless | 3     | 16       | (406.4) | 24 1/2 | (622.3) | CR        | 58800-93L50-000 |
| Watergrip       | Stainless | 3     | 16       | (406.4) | 26     | (660.4) | CR        | 58800-93L60-000 |
| Watergrip       | Stainless | 3     | 15 1/2   | (393.7) | 17     | (431.8) | RR        | 58700-96J00-000 |
| Watergrip       | Stainless | 3     | 15 1/4   | (387.4) | 19     | (482.6) | RR        | 58700-96J10-000 |
| Watergrip       | Stainless | 3     | 15       | (381)   | 21     | (533.4) | RR        | 58700-96J20-000 |
| Watergrip       | Stainless | 3     | 14 3/4   | (374.7) | 23     | (584.2) | RR        | 58700-96J30-000 |
| Watergrip       | Stainless | 3     | 14 1/2   | (368.3) | 25     | (635)   | RR        | 58700-96J40-000 |
| Watergrip       | Stainless | 3     | 14 1/2   | (368.3) | 27     | (685.8) | RR        | 58700-96J50-000 |
| Watergrip       | Stainless | 3     | 15 1/2   | (393.7) | 17     | (431.8) | CR        | 58800-96J00-000 |
| Watergrip       | Stainless | 3     | 15 1/4   | (387.4) | 19     | (482.6) | CR        | 58800-96J10-000 |
| Watergrip       | Stainless | 3     | 15       | (381)   | 21     | (533.4) | CR        | 58800-96J20-000 |
| Watergrip       | Stainless | 3     | 14 3/4   | (374.7) | 23     | (584.2) | CR        | 58800-96J30-000 |
| Watergrip       | Stainless | 3     | 14 1/2   | (368.3) | 25     | (635)   | CR        | 58800-96J40-000 |
| Watergrip       | Stainless | 3     | 14 1/2   | (368.3) | 27     | (685.8) | CR        | 58800-96J50-000 |
| Watergrip       | Stainless | 4     | 15 1/4   | (387.4) | 18     | (457.2) | RR        | 58700-93J00-000 |
| Watergrip       | Stainless | 4     | 15 1/4   | (387.4) | 20     | (508)   | RR        | 58700-93J10-000 |
| Watergrip       | Stainless | 4     | 15 1/4   | (387.4) | 22     | (558.8) | RR        | 58700-93J20-000 |
| Watergrip       | Stainless | 4     | 15 1/4   | (387.4) | 24     | (609.6) | RR        | 58700-93J30-000 |
| Watergrip       | Stainless | 4     | 15 1/4   | (387.4) | 26     | (660.4) | RR        | 58700-93J40-000 |
| Watergrip       | Stainless | 4     | 15 1/4   | (387.4) | 20     | (508)   | CR        | 58800-93J10-000 |
| Watergrip       | Stainless | 4     | 15 1/4   | (387.4) | 22     | (558.8) | CR        | 58800-93J20-000 |
| Watergrip       | Stainless | 4     | 15 1/4   | (387.4) | 24     | (609.6) | CR        | 58800-93J30-000 |
| Watergrip       | Stainless | 4     | 15 1/4   | (387.4) | 26     | (660.4) | CR        | 58800-93J40-000 |
| Watergrip Sport | Stainless | 3     | 15       | (381)   | 19     | (482.6) | RR        | 58700-96L00-000 |
| Watergrip Sport | Stainless | 3     | 14 7/8   | (377.8) | 21     | (533.4) | RR        | 58700-96L10-000 |
| Watergrip Sport | Stainless | 3     | 14 1/2   | (368.3) | 23     | (584.2) | RR        | 58700-96L20-000 |
| Watergrip Sport | Stainless | 3     | 14 1/4   | (362)   | 25     | (635)   | RR        | 58700-96L30-000 |
| Watergrip Sport | Stainless | 3     | 14       | (355.6) | 27     | (685.8) | RR        | 58700-96L40-000 |

Applicable Model : DF300B, DF325A, DF350A

| Type           | Material  | Blade | Diameter |         | Pitch  |         | Part number                                       |
|----------------|-----------|-------|----------|---------|--------|---------|---|
|                |           |       | in       | (mm)    | in     | (mm)    |   |
| Watergrip Dual | Stainless | 3     | 15 1/2   | (393.7) | 12     | (304.8) | 58500-98LA0-000 (Front)<br>58600-98LA0-000 (Rear) |
| Watergrip Dual | Stainless | 3     | 15 1/2   | (393.7) | 15     | (381)   | 58500-98LB0-000 (Front)<br>58600-98LB0-000 (Rear) |
| Watergrip Dual | Stainless | 3     | 15 1/2   | (393.7) | 16 1/2 | (419.1) | 58500-98LC0-000 (Front)<br>58600-98LC0-000 (Rear) |
| Watergrip Dual | Stainless | 3     | 15 1/2   | (393.7) | 18     | (457.2) | 58500-98L90-000 (Front)<br>58600-98L90-000 (Rear) |
| Watergrip Dual | Stainless | 3     | 15 1/2   | (393.7) | 19 1/2 | (495.3) | 58500-98L60-000 (Front)<br>58600-98L60-000 (Rear) |
| Watergrip Dual | Stainless | 3     | 15 1/2   | (393.7) | 21     | (533.4) | 58500-98L00-000 (Front)<br>58600-98L00-000 (Rear) |
| Watergrip Dual | Stainless | 3     | 15 1/2   | (393.7) | 22 1/2 | (571.5) | 58500-98L10-000 (Front)<br>58600-98L10-000 (Rear) |
| Watergrip Dual | Stainless | 3     | 15 1/2   | (393.7) | 24     | (609.6) | 58500-98L20-000 (Front)<br>58600-98L20-000 (Rear) |
| Watergrip Dual | Stainless | 3     | 15 1/2   | (393.7) | 25 1/2 | (647.7) | 58500-98L30-000 (Front)<br>58600-98L30-000 (Rear) |
| Watergrip Dual | Stainless | 3     | 15 1/2   | (393.7) | 27     | (685.8) | 58500-98L40-000 (Front)<br>58600-98L40-000 (Rear) |
| Watergrip Dual | Stainless | 3     | 15 1/2   | (393.7) | 28 1/2 | (723.9) | 58500-98L50-000 (Front)<br>58600-98L50-000 (Rear) |
| Watergrip Dual | Stainless | 3     | 15 1/2   | (393.7) | 30     | (762)   | 58500-98L70-000 (Front)<br>58600-98L70-000 (Rear) |
| Watergrip Dual | Stainless | 3     | 15 1/2   | (393.7) | 31 1/2 | (800.1) | 58500-98L80-000 (Front)<br>58600-98L80-000 (Rear) |

# PROPELLER LINE-UP

| Model    | Material  | Blade    | Diameter |         | Pitch   |         | Rotation* | Description | Part number     |                 |
|----------|-----------|----------|----------|---------|---------|---------|-----------|-------------|-----------------|-----------------|
|          |           |          | in       | (mm)    | in      | (mm)    |           |             |                 |                 |
| DF2.5    | Aluminum  | 3        | 7 3/8    | (187.3) | 5 3/8   | (136.5) | RR        |             | 58110-97JA0-019 |                 |
| DF4A     | Aluminum  | 3        | 7 1/2    | (190.5) | 6       | (152.4) | RR        |             | 58110-91JL0-019 |                 |
| DF5A     | Aluminum  | 3        | 7 1/2    | (190.5) | 6 1/2   | (165.1) | RR        |             | 58110-91JM0-019 |                 |
| DF6A     | Aluminum  | 3        | 7 1/2    | (190.5) | 7       | (177.8) | RR        |             | 58110-91JN0-019 |                 |
| DF8A     | Aluminum  | 3        | 9 1/4    | (235)   | 7       | (177.8) | RR        |             | 58100-89L00-019 |                 |
| DF9.9A   | Aluminum  | 3        | 9 1/4    | (235)   | 8       | (203.2) | RR        | THICK       | 58100-90L41-019 |                 |
|          | Aluminum  | 3        | 9 1/4    | (235)   | 9       | (228.6) | RR        |             | 58100-89L20-019 |                 |
|          | Aluminum  | 3        | 9 1/4    | (235)   | 9       | (228.6) | RR        | THICK       | 58100-90L50-019 |                 |
|          | Aluminum  | 3        | 9 1/4    | (235)   | 10      | (254)   | RR        |             | 58100-89L60-019 |                 |
|          | Aluminum  | 3        | 9 1/4    | (235)   | 10      | (254)   | RR        | THICK       | 58100-90L60-019 |                 |
|          | Aluminum  | 3        | 9 1/4    | (235)   | 10      | (254)   | RR        |             | 58100-89L70-019 |                 |
|          | Aluminum  | 3        | 9 1/4    | (235)   | 11      | (279.4) | RR        |             | 58100-89L70-019 |                 |
| DF9.9B   | Aluminum  | 4        | 10       | (254)   | 5       | (127)   | RR        | High thrust | 58100-94JA2-019 |                 |
| DF15A    | Aluminum  | 4        | 10       | (254)   | 7       | (177.8) | RR        | High thrust | 58100-94JB1-019 |                 |
| DF20A    | Aluminum  | 3        | 9 1/4    | (235)   | 7       | (177.8) | RR        |             | 58100-89L00-019 |                 |
|          | Aluminum  | 3        | 9 1/4    | (235)   | 8       | (203.2) | RR        | THICK       | 58100-90L41-019 |                 |
|          | Aluminum  | 3        | 9 1/4    | (235)   | 9       | (228.6) | RR        |             | 58100-89L20-019 |                 |
|          | Aluminum  | 3        | 9 1/4    | (235)   | 9       | (228.6) | RR        | THICK       | 58100-90L50-019 |                 |
|          | Aluminum  | 3        | 9 1/4    | (235)   | 10      | (254)   | RR        |             | 58100-89L60-019 |                 |
|          | Aluminum  | 3        | 9 1/4    | (235)   | 10      | (254)   | RR        | THICK       | 58100-90L60-019 |                 |
|          | Aluminum  | 3        | 9 1/4    | (235)   | 11      | (279.4) | RR        |             | 58100-89L70-019 |                 |
|          | Aluminum  | 3        | 9 1/4    | (235)   | 12      | (304.8) | RR        |             | 58100-89L50-019 |                 |
|          | DF25A     | Aluminum | 3        | 10 1/4  | (260.3) | 9       | (228.6)   | RR          | THICK           | 58100-96372-019 |
|          | DF30A     | Aluminum | 3        | 10 1/4  | (260.3) | 10      | (254)     | RR          |                 | 58100-91L40-019 |
| Aluminum |           | 3        | 10 1/4   | (260.3) | 10      | (254)   | RR        | THICK       | 58100-96472-019 |                 |
| Aluminum |           | 3        | 10 1/4   | (260.3) | 11      | (279.4) | RR        |             | 58100-91L50-019 |                 |
| Aluminum |           | 3        | 10 1/4   | (260.3) | 12      | (304.8) | RR        |             | 58100-91L20-019 |                 |
| Aluminum |           | 3        | 10 1/4   | (260.3) | 12      | (304.8) | RR        | THICK       | 58100-96482-019 |                 |
| Aluminum |           | 3        | 10 1/4   | (260.3) | 13      | (330.2) | RR        |             | 58100-91L30-019 |                 |
| Aluminum |           | 3        | 10 1/4   | (260.3) | 13      | (330.2) | RR        | THICK       | 58100-96492-019 |                 |
| Aluminum |           | 3        | 10 1/4   | (260.3) | 14      | (355.6) | RR        |             | 58100-95D01-019 |                 |
| Aluminum |           | 3        | 10 1/4   | (260.3) | 15      | (381)   | RR        |             | 58100-96462-019 |                 |
| DF40A    |           | Aluminum | 3        | 11 1/2  | (292.1) | 9       | (228.6)   | RR          |                 | 58100-88LC0-019 |
| DF50A    | Aluminum  | 3        | 11 1/2   | (292.1) | 10      | (254)   | RR        |             | 58100-88LD0-019 |                 |
| DF60A    | Aluminum  | 3        | 11 1/2   | (292.1) | 11      | (279.4) | RR        |             | 58100-88LE0-019 |                 |
|          | Aluminum  | 3        | 11 5/8   | (295.3) | 12      | (304.8) | RR        |             | 58100-88LA0-019 |                 |
|          | Aluminum  | 3        | 11 1/2   | (292.1) | 13      | (330.2) | RR        |             | 58100-88LB0-019 |                 |
|          | Aluminum  | 3        | 11 3/8   | (288.9) | 14      | (355.6) | RR        |             | 58100-88L52-019 |                 |
|          | Aluminum  | 3        | 11 1/4   | (285.8) | 15      | (381)   | RR        |             | 58100-88L62-019 |                 |
|          | Aluminum  | 3        | 11 1/8   | (282.6) | 16      | (406.4) | RR        |             | 58100-88L72-019 |                 |
|          | Aluminum  | 3        | 11       | (279.4) | 17      | (431.8) | RR        |             | 58100-88LF0-019 |                 |
|          | Stainless | 3        | 11 1/8   | (282.6) | 16      | (406.4) | RR        |             | 58200-88L30-000 |                 |
|          | DF50AV    | Aluminum | 3        | 14      | (355.6) | 9       | (228.6)   | RR          |                 | 58100-87LG1-019 |
|          | DF60AV    | Aluminum | 3        | 14      | (355.6) | 11      | (279.4)   | RR          |                 | 58100-87LH0-019 |
| Aluminum |           | 3        | 13 3/4   | (349.3) | 12      | (304.8) | RR        |             | 58100-87LI0-019 |                 |
| Aluminum |           | 3        | 14       | (355.6) | 13      | (330.2) | RR        |             | 58100-87LA0-019 |                 |
| Aluminum |           | 3        | 13 7/8   | (352.4) | 15      | (381)   | RR        |             | 58100-87LB0-019 |                 |
| Aluminum |           | 3        | 13 3/4   | (349.3) | 17      | (431.8) | RR        |             | 58100-87LC0-019 |                 |
| DF70A    | Aluminum  | 3        | 14       | (355.6) | 13      | (330.2) | RR        |             | 58100-87LA0-019 |                 |
| DF80A    | Aluminum  | 3        | 13 7/8   | (352.4) | 15      | (381)   | RR        |             | 58100-87LB0-019 |                 |
| DF90A    | Aluminum  | 3        | 13 3/4   | (349.3) | 17      | (431.8) | RR        |             | 58100-87LC0-019 |                 |
| DF100B   | Aluminum  | 3        | 13 3/4   | (349.3) | 19      | (482.6) | RR        |             | 58100-87LD0-019 |                 |
|          | Aluminum  | 3        | 13 3/4   | (349.3) | 21      | (533.4) | RR        |             | 58100-87LE0-019 |                 |
|          | Aluminum  | 3        | 13 3/4   | (349.3) | 23      | (584.2) | RR        |             | 58100-87LF0-019 |                 |
|          | Aluminum  | 3        | 13 1/2   | (342.9) | 15      | (381)   | RR        |             | 58100-90JE0-019 |                 |
|          | Aluminum  | 3        | 14       | (355.6) | 17      | (431.8) | RR        |             | 58100-90JA0-019 |                 |
|          | Aluminum  | 3        | 14       | (355.6) | 19      | (482.6) | RR        |             | 58100-90JB0-019 |                 |
|          | Aluminum  | 3        | 14       | (355.6) | 21      | (533.4) | RR        |             | 58100-90JC0-019 |                 |
|          | Aluminum  | 3        | 14       | (355.6) | 23      | (584.2) | RR        |             | 58100-90JD0-019 |                 |
|          | Stainless | 3        | 13 7/8   | (352.4) | 15      | (381)   | RR        |             | 58200-92J40-000 |                 |
|          | Stainless | 3        | 13 7/8   | (352.4) | 17      | (431.8) | RR        |             | 58200-92J50-000 |                 |
|          | Stainless | 3        | 13 7/8   | (352.4) | 19      | (482.6) | RR        |             | 58200-92J60-000 |                 |
|          | Stainless | 3        | 13 7/8   | (352.4) | 21      | (533.4) | RR        |             | 58200-92J70-000 |                 |
|          | Stainless | 3        | 13 7/8   | (352.4) | 23      | (584.2) | RR        |             | 58200-92J80-000 |                 |
|          | Stainless | 3        | 13 7/8   | (352.4) | 25      | (635)   | RR        |             | 58200-92J90-000 |                 |

\*RR:Regular-Rotation model, CR:Counter-Rotation model

| Model   | Material  | Blade | Diameter |         | Pitch |         | Rotation* | Description | Part number     |
|---------|-----------|-------|----------|---------|-------|---------|-----------|-------------|-----------------|
|         |           |       | in       | (mm)    | in    | (mm)    |           |             |                 |
| DF100C  | Aluminum  | 3     | 13 1/2   | (342.9) | 15    | (381)   | RR        |             | 58100-90JE0-019 |
| DF115B  | Aluminum  | 3     | 14       | (355.6) | 17    | (431.8) | RR        |             | 58100-90JA0-019 |
| DF115BG | Aluminum  | 3     | 14       | (355.6) | 19    | (482.6) | RR        |             | 58100-90JB0-019 |
| DF140B  | Aluminum  | 3     | 14       | (355.6) | 21    | (533.4) | RR        |             | 58100-90JC0-019 |
| DF140BG | Aluminum  | 3     | 14       | (355.6) | 23    | (584.2) | RR        |             | 58100-90JD0-019 |
|         | Stainless | 3     | 13 7/8   | (352.4) | 15    | (381)   | RR        |             | 58200-92J40-000 |
|         | Stainless | 3     | 13 7/8   | (352.4) | 17    | (431.8) | RR        |             | 58200-92J50-000 |
|         | Stainless | 3     | 13 7/8   | (352.4) | 19    | (482.6) | RR        |             | 58200-92J60-000 |
|         | Stainless | 3     | 13 7/8   | (352.4) | 21    | (533.4) | RR        |             | 58200-92J70-000 |
|         | Stainless | 3     | 13 7/8   | (352.4) | 23    | (584.2) | RR        |             | 58200-92J80-000 |
|         | Stainless | 3     | 13 7/8   | (352.4) | 25    | (635)   | RR        |             | 58200-92J90-000 |
|         | Stainless | 3     | 13 7/8   | (352.4) | 17    | (431.8) | CR        |             | 58200-92JA0-000 |
|         | Stainless | 3     | 13 7/8   | (352.4) | 19    | (482.6) | CR        |             | 58200-92JB0-000 |
|         | Stainless | 3     | 13 7/8   | (352.4) | 21    | (533.4) | CR        |             | 58200-92JC0-000 |
|         | Stainless | 3     | 13 7/8   | (352.4) | 23    | (584.2) | CR        |             | 58200-92JD0-000 |

## HARDWARE FOR PROPELLER

| Applicable Model             | STOPPER         | PROPELLER BUSH  | HARDWARE KIT    |                 |                 |                 |                 |                 |
|------------------------------|-----------------|-----------------|-----------------|-----------------|-----------------|-----------------|-----------------|-----------------|
|                              |                 |                 | SPACER          | WASHER          | STOPPER         | NUT             | COTTER PIN      |                 |
| DF2.5                        | 57635-91JL0-000 | 58120-97JA0-000 | N/A             | -               | -               | -               | 58130-91JL0-000 | 09204-03003-000 |
| DF4A/5A/6A                   | 57635-97L00-000 | 58120-91JL0-000 | N/A             | -               | -               | -               | 58130-91JL0-000 | 09204-03003-000 |
| DF8A/9.9A                    | 57632-94J00-000 | 58120-89L00-000 | N/A             | -               | 09160-12066-000 | -               | 09141-12005-000 | 09204-02004-000 |
| DF9.9B/15A/20A               | 57632-94J00-000 | 58120-89L00-000 | N/A             | -               | 09160-12066-000 | -               | 09141-12005-000 | 09204-02004-000 |
| DF25A/30A                    | 57632-91L00-000 | 58120-96401-000 | 57630-96300-000 | 57633-96300-000 | 09160-14028-000 | -               | 09141-14008-000 | 09204-03003-000 |
| DF40A/50A/60A                | 57632-95320-000 | 58120-88L01-000 | 57630-94301-000 | 57633-94301-000 | 09160-18028-000 | -               | 09141-18005-000 | 09204-03003-000 |
| DF50AV/60AV                  | 57635-90J01-000 | 58105-90J00-000 | 57630-90J00-000 | 57633-90J02-000 | 09160-18028-000 | -               | 09141-18005-000 | 09204-03003-000 |
| DF70A/80A/90A/100B           | 57632-87L01-000 | 58105-90J00-000 | 57630-90J00-000 | 57633-90J02-000 | 09160-18028-000 | -               | 09141-18005-000 | 09204-03003-000 |
| DF100C/115B/115BG/140B/140BG | 57635-92J01-000 | 58105-90J00-000 | 57630-90J00-000 | 57633-90J02-000 | 09160-18028-000 | -               | 09141-18005-000 | 09204-03003-000 |
| DF150A-300AP                 | 57632-93L11-000 | 58120-93L00-000 | 57630-93L00-000 | 57633-93L00-000 | 09160-18028-000 | -               | 09141-18005-000 | 09204-03003-000 |
| DF300B/DF325A/350A Front     | 58531-98L00-000 | 58520-98L00-000 | 58540-98L01-000 | 58541-98L00-000 | -               | 58551-98L00-000 | 58561-98L01-000 | -               |
| DF300B/DF325A/350A Rear      | 58631-98L00-000 | 58620-98L00-000 | 58640-98L00-000 | 58641-98L00-000 | 09160-18019-000 | -               | 09141-18005-000 | 09204-03003-000 |

## Choosing The Right Propeller

Propeller selection is very important in the performance of the boat. Acceleration, speed, fuel efficiency, stability and engine RPM all are affected by the propeller. Operating requirements and conditions will also determine which design, style and pitch of the propeller your customer can choose. The combination of boat, engine and appropriate propeller size may have already been tested by the boat manufacturer.

Your Customer may need your assistance to determine the correct propeller for their application.

### Stainless Steel Propellers

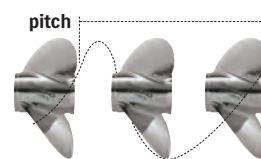
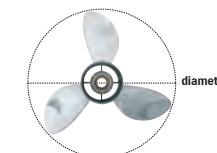
Suzuki Stainless Steel Propellers offer high performance and durability. Their aggressive design enhances the overall performance of the boat and the durability of stainless steel ensures long term dependability. Suzuki Stainless Steel propellers are also fitted with a rubber cushion hub to help absorb vibration and shock should they strike a foreign object.

### Propeller Sizing

When referring to propeller size, the first number is the number of blades, the second number details the **diameter** of the propeller, and the third number is the **pitch**. Example: **3 x 13 x 18** = 3 blades x Diameter: 13 inches x Pitch: 18 inches. The pitch is the most significant factor when choosing a propeller.

### Diameter

Diameter is the distance across an imaginary circle that is made when a propeller rotates. Diameter is determined during the designing process of a propeller and is usually based on engine size, gear case design, horsepower and speed.



### Pitch

Pitch is the theoretical distance that a propeller corkscrews forward through the water. In theory, an 18"(457.2mm) pitch propeller would travel 18"(457.2mm) with each complete revolution\*.

Lower pitches accelerate faster, but have lower top end speed. Higher pitches have a slower acceleration, but attain higher top speeds. An inch of pitch is generally equal to 150-200 engine RPM at wide open throttle (WOT). If pitch increases by an inch, RPM will decrease by 150-200 RPM at WOT. If pitch decreases by an inch, RPM will increase by 150-200 RPM at WOT.

\*Note during actual operation, this number will be affected by slip factors such as water conditions, boat weight, propeller style, etc.

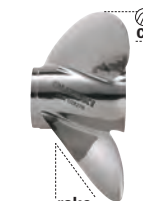
### Propeller Cup

Cup is the curve along the trailing edge of the propeller blade. This reduces propeller slip and ventilation, allowing users to operate their engine at a higher transom mounting, and use more trim for bow lift.

### Rake

Rake is the angle, in degrees, that the propeller blades are mounted to the barrel of the propeller. Blades of a zero degree rake propeller are mounted perpendicular to the barrel. High rake propellers have blades that angle more to the rear of the propeller. These blades hold water longer and ventilate less at higher engine heights.

Such propellers produce higher thrust which helps lift the bow of the boat more effectively.



**ECSTAR V7000 SEMI-SYNTHETIC MARINE ENGINE OIL**



- Help to protect engines in severe conditions.
- Contribute to improve engine response.
- Viscosity index improvers help engine start easily.
- Advanced detergents keep engine parts clean.
- Special additives help protect engine in both salt and fresh water environments.

| Typical Properties  |                | Sales Unit | Part Number     |
|---------------------|----------------|------------|-----------------|
| SAE viscosity grade | 10W-40         | 12x1L      | 990F0-22B31-001 |
| Oil grade           | Semi-Synthetic | 4x4L       | 990F0-22B31-004 |
| Quality             | FC-W           | 1x60L      | 990F0-22B31-060 |
|                     |                | 1x208L     | 990F0-22B31-208 |

**ECSTAR MARINE GEAR OIL**



**ECSTAR MARINE GEAR OIL SAE 90 GL-5**

|            |                       |
|------------|-----------------------|
| Volume     | > 1 L/60 L            |
| Container  | > plastic bottle/drum |
| Sales Unit |                       |
| 12 x 1 L   | 990F0-22B33-001       |
| 1x 60 L    | 990F0-22B33-060       |



**ECSTAR MARINE GEAR OIL PUMP**

Designed for 1 l ECSTAR gear oil bottle with hose and connector suitable for Suzuki outboard engines.

|            |                 |
|------------|-----------------|
| Sales Unit | 1pc             |
|            | 990C0-99002-000 |

**MAINTAINING YOUR SUZUKI**

**Replacement Guideline (Engine oil & Gear oil)**

| Interval | 1st time      | 20 hours or 1 month* |
|----------|---------------|----------------------|
|          | From 2nd time | 100 hours or 1 year* |

\*Whichever comes first.  
This guideline may vary by outboard model, condition of use, region, etc.

# CARE & MAINTENANCE ITEM

## SUZUKI MARINE by MOTUL (Suzuki Approved)



**4-STROKE ENGINE OIL**  
SAE 10W-30 Semi-Synthetic,FC-W  
12x1L 99000-22B59-4T1  
4x5L 99000-22B59-4T5



**4-STROKE ENGINE OIL**  
SAE 10W-40 Semi-Synthetic,FC-W  
12x1L 99000-22B60-4T1  
4x5L 99000-22B60-4T5  
60L 99000-22B60-4T6  
208L 99000-22B60-4T8



**MARINE GEAR OIL**  
SAE 90 GL-5  
12x1L 99000-22B61-001



**MARINE GEAR OIL**  
SAE 90, GL-5  
24x0.35L 99000-22B61-P35

## TOUCH-UP PAINT

**99000-10202-0EP**  
SHADOW BLACK METALLIC (set)

**99000-10202-YAY**  
PEARL NEBULAR BLACK (set)

**99000-10202-Y5S**  
WHITE (single)

**990F0-10202-QTN**  
NEW WHITE

## PAINT SPRAY



**990F0-41005-CLR**  
CLEAR COAT

**990F0-41005-0ED**  
CALIFORNIA GREY METALLIC

**990F0-41005-0EP**  
SHADOW BLACK METALLIC

**990F0-41005-YAY**  
PEARL NEBULAR BLACK

**990F0-41005-Y5S**  
WHITE

**990F0-41005-QTN**  
NEW WHITE

## LIQUID GASKET



**99000-31140-THR**  
1207B (BLACK)  
100 grams (3.5 oz)

## GREASE



**SHELL GADUS S2 V100 3\***  
plastic cartridge  
For AT, BE, CH, DE, FR, UK, IE, IT, LU, NL, RO  
1 x 400g 990F0-25011-GER  
For CZ, DK, EE, FI, UK, HU, LT, LV, NO, PL, SE, SK  
1 x 400g 990F0-25011-002  
For BA, BG, ES, HR, IT, PT, RO, RS, SI, TR  
1 x 400g 990F0-25011-003  
\*Replacement for Super Grease A  
99000-25011-000/99000-25480-000



**99000-25520-000**  
WATER RESISTANT GREASE EP2  
250 grams (8.8 oz)



## THREAD LOCK

**99000-32130-000**  
1360 (RED)  
50 grams (1.7 oz)

## FLUSH-HOSE ATTACHMENT



**55181-95200-000**  
Applicable Model DF4A-6A/  
40A-60A



**17917-87L00-000**  
Applicable Model DF8A-350A

## ZINC ANODE for saltwater



**55300-95500-000**  
Applicable Model DF8A/9.9A/  
40A-60A



**55125-96310-000**  
Applicable Model DF25/R/Q



**55321-90J01-000**  
Applicable Model DF50AV/60AV/  
100A-140A

## MAGNESIUM ANODE for freshwater



**55321-87J11-000**  
Applicable Model DF4A-350A



**55321-94910-000**  
Applicable Model DF70A-350A

## ENGINE COVER



**99000-81700-000**  
Applicable Model DF8A-20A

**99000-81730-000**  
Applicable Model DF115BG/140BG  
DF200T/Z-250T/Z

**99000-81710-000**  
Applicable Model DF25A-60A

**99000-81740-000**  
Applicable Model DF150A-200A/  
175AP/200AP/  
250AP/300AP

**99000-81720-000**  
Applicable Model DF70A-140A

**99000-81750-000**  
Applicable Model DF300B/325A/  
350A

## FLUSHING TOOL



**99000-81202-000**  
Applicable Model DF300B/325A/350A  
(-Year 2022)

**99000-81210-000**  
Applicable Model DF300B/325A/350A/  
DF300BMD/  
350AMD (Year 2023-)

## ALUMINUM ANODE for brackish water, saltwater



**55321-87J01-000**  
Applicable Model DF2.5-350A



**55320-94900-000**  
Applicable Model DF60A-350A



**55321-95J00-000**  
Applicable Model DF2.5, DF4A-6A

**55321-93J01-000**  
Applicable Model DF70A-90A/  
100B/150-350A

## Anode Bulk Pack

**55321-87810-B50**  
Applicable Model DF2.5-350A  
55321-87J01 x 50pcs in 1pack

# MAINTENANCE KIT

SUZUKI highly recommends you to replace your outboard motor with Maintenance Kits every 100 hours or 1 year, whichever comes first.



## LINEUP For 4 STROKE OBM

| MODEL YEAR                        | KIT PART NUMBER | PART NUMBER     | PART NAME                 | QTY |
|-----------------------------------|-----------------|-----------------|---------------------------|-----|
| DF2/2.5 ('12-)                    | 17400-97810     | 09168-10022-000 | GASKET(10X17X1.5)         | 1   |
|                                   |                 | 09202-02006-000 | PIN(2.9X14)               | 1   |
|                                   |                 | 09204-03003-000 | PIN                       | 1   |
|                                   |                 | 09280-33005-000 | O RING(D:1.9,ID:32.7)     | 1   |
|                                   |                 | 09482-00406-000 | PLUG,SPARK(CR6HSA)        | 1   |
|                                   |                 | 17461-97J00-000 | IMPELLER,WATER PUMP       | 1   |
|                                   |                 | 17471-97J00-000 | PANEL,PUMP CASE UNDER     | 1   |
|                                   |                 | 17472-97J00-000 | GASKET,PUMP CASE PANEL    | 1   |
|                                   |                 | 55321-87J01-000 | ANODE,PROTECTION          | 1   |
|                                   |                 | 59178-97J00-000 | GASKET,DRAIN PLUG         | 2   |
| DF4A/5A/6A P01 DF4A/6A P03 ('17-) | 17400-91891     | 17400-98661-000 | KIT, WATER PUMP REPAIR    | 1   |
|                                   |                 | 09168-12017-000 | GASKET(12X17X1)           | 1   |
|                                   |                 | 09204-03003-000 | PIN                       | 1   |
|                                   |                 | 09280-39002-000 | O RING(D:2,ID:38.5)       | 1   |
|                                   |                 | 09482-00L04-000 | PLUG,SPARK(CPR6EA-9)      | 1   |
|                                   |                 | 16510-16H11-000 | FILTER,ENGINE OIL         | 1   |
|                                   |                 | 17412-91J00-000 | PANEL,WATER PUMP CASE UPR | 1   |
|                                   |                 | 17413-91J00-000 | SLEEVE,WATER PUMP CASE    | 1   |
|                                   |                 | 44330-13H00-000 | FILTER,FUEL               | 1   |
|                                   |                 | 55321-87J01-000 | ANODE,PROTECTION          | 1   |
| DF8A/9.9A ('10-)                  | 17400-99841     | 17400-99J20-000 | KIT,WATER PUMP REPAIR     | 1   |
|                                   |                 | 09168-12017-000 | GASKET(12X17X1)           | 1   |
|                                   |                 | 09204-02004-000 | PIN                       | 1   |
|                                   |                 | 09280-13004-000 | O RING(D:1.9,ID:13)       | 1   |
|                                   |                 | 09280-22019-000 | O RING(D:1.9,ID:21.8)     | 1   |
|                                   |                 | 09280-54001-000 | O RING(D:2.4,ID:52.6)     | 1   |
|                                   |                 | 09482-00528-000 | PLUG,SPARK(CR6E)          | 2   |
|                                   |                 | 15410-98500-000 | FILTER,FUEL               | 1   |
|                                   |                 | 16510-45H10-000 | FILTER ASSY,ENG OIL       | 1   |
|                                   |                 | 17413-94J00-000 | SLEEVE,WATER PUMP CASE    | 1   |

| MODEL YEAR            | KIT PART NUMBER        | PART NUMBER                     | PART NAME              | QTY             |                         |   |
|-----------------------|------------------------|---------------------------------|------------------------|-----------------|-------------------------|---|
| DF9.9B/15A/20A ('13-) | 17400-89812            | 17400-99J20-000                 | KIT, WATER PUMP REPAIR | 1               |                         |   |
|                       |                        | 09168-12017-000                 | GASKET(12X17X1)        | 1               |                         |   |
|                       |                        | 09204-02004-000                 | PIN                    | 1               |                         |   |
|                       |                        | 09280-13004-000                 | O RING(D:1.9,ID:13)    | 1               |                         |   |
|                       |                        | 09280-22019-000                 | O RING(D:1.9,ID:21.8)  | 1               |                         |   |
|                       |                        | 09280-54001-000                 | O RING(D:2.4,ID:52.6)  | 1               |                         |   |
|                       |                        | 09482-00661-000                 | PLUG,SPARK(MR6K-9)     | 2               |                         |   |
|                       |                        | 15410-87L00-000                 | FILTER,FUEL            | 1               |                         |   |
|                       |                        | 16510-45H10-000                 | FILTER ASSY,ENG OIL    | 1               |                         |   |
|                       |                        | 17413-94J00-000                 | SLEEVE,WATER PUMP CASE | 1               |                         |   |
|                       |                        | 55321-87J01-000                 | ANODE,PROTECTION       | 2               |                         |   |
|                       |                        | 59178-97J00-000                 | GASKET,DRAIN PLUG      | 2               |                         |   |
|                       |                        | DF25A/30A ('15-)                | 17400-94824            | 17400-94L21-000 | KIT, WATER PUMP REPAIR  | 1 |
|                       |                        |                                 |                        | 09168-12017-000 | GASKET(12X17X1)         | 1 |
|                       |                        |                                 |                        | 09204-03003-000 | PIN                     | 1 |
| 09280-22019-000       | O RING(D:1.9,ID:21.8)  |                                 |                        | 1               |                         |   |
| 09482-00661-000       | PLUG,SPARK(MR6K-9)     |                                 |                        | 3               |                         |   |
| 15410-87L00-000       | FILTER,FUEL            |                                 |                        | 1               |                         |   |
| 16510-87J01-000       | FILTER ASSY,OIL        |                                 |                        | 1               |                         |   |
| 17413-94L00-000       | SLEEVE,WATER PUMP CASE |                                 |                        | 1               |                         |   |
| 55321-87J01-000       | ANODE,PROTECTION       |                                 |                        | 5               |                         |   |
| 59178-97J00-000       | GASKET,DRAIN PLUG      |                                 |                        | 2               |                         |   |
| DF40A/50A/60A ('10-)  | 17400-88812            |                                 |                        | 17400-88L01-000 | KIT, WATER PUMP REPAIR  | 1 |
|                       |                        |                                 |                        | 09168-10022-000 | GASKET(10X17X1.5)       | 2 |
|                       |                        |                                 |                        | 09168-12012-000 | GASKET(12.5X20X2.5)     | 1 |
|                       |                        |                                 |                        | 09204-03003-000 | PIN                     | 1 |
|                       |                        |                                 |                        | 09280-22019-000 | O RING(D:1.9,ID:21.8)   | 2 |
|                       |                        | 09482-00446-000                 | PLUG,SPARK(NGK DCPR6E) | 3               |                         |   |
|                       |                        | 15410-88L00-000                 | FILTER,FUEL            | 1               |                         |   |
|                       |                        | 16510-87J01-000                 | FILTER ASSY,OIL        | 1               |                         |   |
|                       |                        | 55321-87J01-000                 | ANODE,PROTECTION       | 3               |                         |   |
|                       |                        | DF50A/60AV ('14-)               | 17400-88822            | 17400-99E12-000 | KIT, WATER PUMP REPAIR  | 1 |
|                       |                        |                                 |                        | 09168-10022-000 | GASKET(10X17X1.5)       | 2 |
|                       |                        |                                 |                        | 09168-12012-000 | GASKET(12.5X20X2.5)     | 1 |
|                       |                        |                                 |                        | 09204-03003-000 | PIN                     | 1 |
|                       |                        |                                 |                        | 09280-22019-000 | O RING(D:1.9,ID:21.8)   | 2 |
|                       |                        |                                 |                        | 09482-00446-000 | PLUG,SPARK(NGK DCPR6E)  | 3 |
| 15410-88L00-000       | FILTER,FUEL            |                                 |                        | 1               |                         |   |
| 16510-87J01-000       | FILTER ASSY,OIL        |                                 |                        | 1               |                         |   |
| 55321-87J01-000       | ANODE,PROTECTION       |                                 |                        | 3               |                         |   |
| DF70A/80A/90A ('09-)  | 17400-87813            |                                 |                        | 17400-87L04-000 | KIT, WATER PUMP REPAIR  | 1 |
|                       |                        |                                 |                        | 09168-10038-000 | GASKET(9.5X16.5X2)      | 2 |
|                       |                        |                                 |                        | 09168-12012-000 | GASKET(12.5X20X2.5)     | 1 |
|                       |                        |                                 |                        | 09204-03003-000 | PIN                     | 1 |
|                       |                        |                                 |                        | 09280-22019-000 | O RING(D:1.9,ID:21.8)   | 3 |
|                       |                        |                                 |                        | 09482-00446-000 | PLUG,SPARK(NGK DCPR6E)  | 4 |
|                       |                        | 15410-87L00-000                 | FILTER,FUEL            | 1               |                         |   |
|                       |                        | 16510-61A32-000                 | FILTER ASSY,OIL WAKO   | 1               |                         |   |
|                       |                        | 55321-87J01-000                 | ANODE,PROTECTION       | 3               |                         |   |
|                       |                        | DF100B ('18-)                   | 17400-87833            | 17400-87L04-000 | KIT, WATER PUMP REPAIR  | 1 |
|                       |                        |                                 |                        | 09168-10038-000 | GASKET(9.5X16.5X2)      | 2 |
|                       |                        |                                 |                        | 09168-12012-000 | GASKET(12.5X20X2.5)     | 1 |
|                       |                        |                                 |                        | 09204-03003-000 | PIN                     | 1 |
|                       |                        |                                 |                        | 09280-22019-000 | O RING(D:1.9,ID:21.8)   | 3 |
|                       |                        |                                 |                        | 09482-00446-000 | PLUG,SPARK(NGK DCPR6E)  | 4 |
| 15412-92J00-000       | FILTER,FUEL            |                                 |                        | 1               |                         |   |
| 16510-61A32-000       | FILTER ASSY,OIL WAKO   |                                 |                        | 1               |                         |   |
| 55321-87J01-000       | ANODE,PROTECTION       |                                 |                        | 3               |                         |   |
| DF100C-140B(G)        | 99100-99L00            |                                 |                        | 17400-92J23-000 | KIT,WATER PUMP REPAIR   | 1 |
|                       |                        |                                 |                        | 11265-87E10-000 | GASKET,PROTECTION COVER | 2 |
|                       |                        |                                 |                        | 15412-92J00-000 | FILTER,FUEL             | 1 |
|                       |                        |                                 |                        | 16510-61A32-000 | FILTER ASSY,OIL WAKO    | 1 |
|                       |                        |                                 |                        | 55321-87J01-000 | ANODE,PROTECTION        | 5 |
|                       |                        |                                 |                        | 09168-10022-000 | GASKET(10X17X1.5)       | 2 |
|                       |                        | 09168-12012-000                 | GASKET(12.5X20X2.5)    | 1               |                         |   |
|                       |                        | 09204-03003-000                 | PIN                    | 1               |                         |   |
|                       |                        | 09280-22019-000                 | O RING(D:1.9,ID:21.8)  | 3               |                         |   |
|                       |                        | 09482-00649-000                 | PLUG,SPARK(LKR6E)      | 4               |                         |   |
|                       |                        | DF200A/200AP/175AP/150AP ('16-) | 17400-96833            | 17400-96J04-000 | KIT, WATER PUMP REPAIR  | 1 |
|                       |                        |                                 |                        | 09168-10038-000 | GASKET(9.5X16.5X2)      | 2 |
|                       |                        |                                 |                        | 09168-12012-000 | GASKET(12.5X20X2.5)     | 1 |
|                       |                        |                                 |                        | 09204-03003-000 | PIN                     | 1 |
|                       |                        |                                 |                        | 09280-22019-000 | O RING(D:1.9,ID:21.8)   | 5 |
| 09482-00649-000       | PLUG,SPARK(LKR6E)      |                                 |                        | 4               |                         |   |
| 15412-92J00-000       | FILTER,FUEL            |                                 |                        | 1               |                         |   |
| 16510-96J10-000       | FILTER ASSY,OIL        |                                 |                        | 1               |                         |   |
| 55321-87J01-000       | ANODE,PROTECTION       |                                 |                        | 6               |                         |   |

| MODEL YEAR           | KIT PART NUMBER         | PART NUMBER               | PART NAME               | QTY             |
|----------------------|-------------------------|---------------------------|-------------------------|-----------------|
| DF200/225/250 ('11-) | 17400-93855             | 17400-93J05-000           | KIT, WATER PUMP REPAIR  | 1               |
|                      |                         | 09168-10038-000           | GASKET(9.5X16.5X2)      | 2               |
|                      |                         | 09168-12012-000           | GASKET(12.5X20X2.5)     | 1               |
|                      |                         | 09204-03003-000           | PIN                     | 1               |
|                      |                         | 09280-22019-000           | O RING(D:1.9,ID:21.8)   | 7               |
|                      |                         | 09482-00427-000           | PLUG,SPARK(NGK,BKR6E)   | 6               |
|                      |                         | 15412-93J10-000           | FILTER ASSY,FUEL        | 1               |
|                      |                         | 16510-96J10-000           | FILTER ASSY,OIL         | 1               |
|                      |                         | 55320-94900-000           | ANODE SET,CLAMP BRACKET | 1               |
|                      |                         | 55321-87J01-000           | ANODE,PROTECTION        | 7               |
|                      |                         | 17400-98J04-000           | KIT, WATER PUMP REPAIR  | 1               |
|                      |                         | 09168-10038-000           | GASKET(9.5X16.5X2)      | 2               |
|                      |                         | 09168-12012-000           | GASKET(12.5X20X2.5)     | 1               |
|                      |                         | 09204-03003-000           | PIN                     | 1               |
|                      |                         | DF250A/300(A)/250S ('11-) | 17400-98865             | 09280-22019-000 |
| 09482-00427-000      | PLUG,SPARK(NGK,BKR6E)   |                           |                         | 6               |
| 15412-93J10-000      | FILTER ASSY,FUEL        |                           |                         | 1               |
| 16510-96J10-000      | FILTER ASSY,OIL         |                           |                         | 1               |
| 55320-94900-000      | ANODE SET,CLAMP BRACKET |                           |                         | 1               |
| 55321-87J01-000      | ANODE,PROTECTION        |                           |                         | 8               |

The following maintenance kits are also available.

| MODEL YEAR              | KIT PART NUMBER |
|-------------------------|-----------------|
| DF2/2.5 ('06-'11)       | 17400-97820     |
| DF4/5/6 ('02-'10)       | 17400-91860     |
| DF4/5/6 ('11-'16)       | 17400-91830     |
| DF9.9/15 ('11-'13)      | 17400-94810     |
| DF20/25 V2 ('06-)       | 17400-95872     |
| DF25/30 ('01-'10)       | 17400-89822     |
| DF40/50 ('06LATE-'10)   | 17400-87822     |
| DF60 ('09LATE-'09END)   | 17400-99852     |
| DF60/70 ('07)           | 17400-99871     |
| DF60/70 ('08-'09EARLY)  | 17400-99861     |
| DF100/115 ('10-'12)     | 17400-92842     |
| DF100A/115A/140A ('13-) | 17400-92823     |
| DF140 ('10-'12)         | 17400-92852     |
| DF150/175 ('06-)        | 17400-96824     |
| DF325A/350A ('18-'22)   | 17400-98873     |

You can also check the components for Maintenance Kits at Suzuki Ultimate Rigging Selector (in PDF section):  
<https://www.globalsuzuki.com/marine/SuzukiUltimateRiggingSelector/>

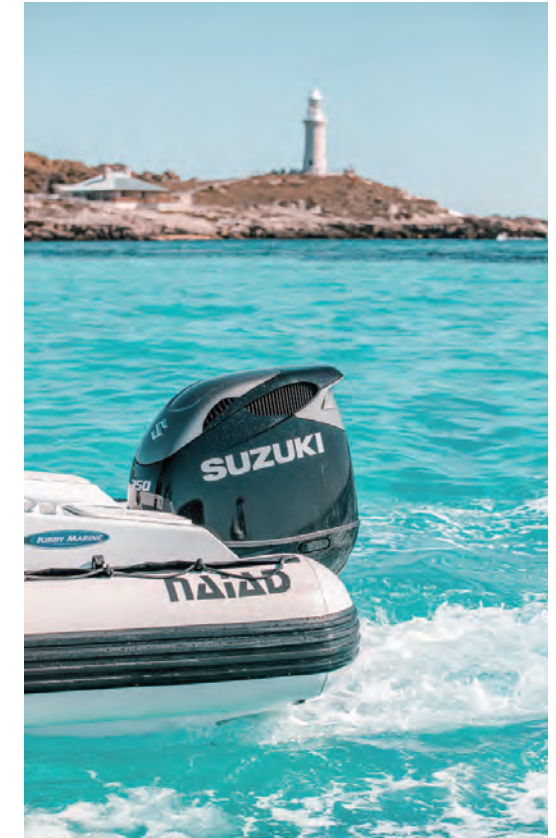




# APPLICATION CHART

| ITEM<br>Applicable for Remote Control      | PAGE    | DF350AMD                         | DF350A  | DF325A | DF300BMD | DF300B | DF300AP | DF250AP | DF200AP | DF175AP | DF150AP | DF250T | DF250Z | DF225T | DF225Z | DF200T | DF200Z | DF200AT | DF200AZ | DF175AT | DF175AZ | DF150AT | DF150AZ | DF140BTG | DF140BZG | DF140BT | DF140BZ | DF115BTG | DF115BZG |   |
|--|---------|----------------------------------|---------|--------|----------|--------|---------|---------|---------|---------|---------|--------|--------|--------|--------|--------|--------|---------|---------|---------|---------|---------|---------|----------|----------|---------|---------|----------|----------|---|
|  |         | SUZUKI PRECISION CONTROL (S.P.C) | P.08-17 | ○      | ○        | ○      | ○       | ○       | ○       | ○       | ○       | ○      | ○      |        |        |        |        |         |         | ○       | ○       | ○       | ○       | ○        | ○        | ○       | ○       | ○        | ○        | ○ |
| MECHANICAL REMOTE CONTROL (CAN CONNECTION) | P.18-29 |                                  |         |        |          |        |         |         |         |         |         |        |        |        |        |        |        | ○       | ○       | ○       | ○       | ○       | ○       | ○        | ○        | ○       | ○       | ○        | ○        | ○ |
| MECHANICAL REMOTE CONTROL                  | P.30-31 |                                  |         |        |          |        |         |         |         |         |         |        |        |        |        |        |        | ○       | ○       | ○       | ○       | ○       | ○       | ○        | ○        | ○       | ○       | ○        | ○        | ○ |
| TROLL MODE SWITCH PANEL                    | P.25    | ○                                | ○       | ○      | ○        | ○      | ○       | ○       | ○       | ○       | ○       | ○      | ○      | ○      | ○      | ○      | ○      |         |         |         |         |         |         |          |          |         |         |          |          |   |
| KEYLESS START SYSTEM (CAN CONNECTION)      | P.32-33 | ○                                | ○       | ○      | ○        | ○      | ○       | ○       | ○       | ○       | ○       | ○      | ○      | ○      | ○      | ○      | ○      | ○       | ○       | ○       | ○       | ○       | ○       | ○        | ○        | ○       | ○       | ○        | ○        | ○ |
| SUZUKI MULTI-FUNCTION GAUGE (SMG4)         | P.34-41 | ○                                | ○       | ○      | ○        | ○      | ○       | ○       | ○       | ○       | ○       | ○      | ○      | ○      | ○      | ○      | ○      | ○       | ○       | ○       | ○       | ○       | ○       | ○        | ○        | ○       | ○       | ○        | ○        | ○ |
| ANALOGUE INSTRUMENT                        | P.46-47 |                                  |         |        |          |        |         |         |         |         |         | ○      | ○      | ○      | ○      | ○      | ○      | ○       | ○       | ○       | ○       | ○       | ○       | ○        | ○        | ○       | ○       | ○        | ○        | ○ |
| STEERING                                   | P.48-49 |                                  |         |        |          |        |         |         |         |         |         |        |        |        |        |        |        |         |         |         |         |         |         |          |          |         |         |          |          |   |
| TILLER HANDLE KIT                          |         |                                  |         |        |          |        |         |         |         |         |         |        |        |        |        |        |        |         |         |         |         |         |         |          |          |         |         |          |          |   |
| DUAL-ENGINE TIE-BAR                        |         |                                  |         |        |          |        |         |         | ○       | ○       | ○       | ○      | ○      | ○      | ○      | ○      | ○      | ○       | ○       | ○       | ○       | ○       | ○       | ○        | ○        | ○       | ○       | ○        | ○        | ○ |
| STEERING EXTENSION KIT                     |         |                                  |         |        |          |        |         |         | ○       | ○       | ○       | ○      | ○      | ○      | ○      | ○      | ○      | ○       | ○       | ○       | ○       | ○       | ○       | ○        | ○        | ○       | ○       | ○        | ○        | ○ |
| STEERING-BRACKET ATTACHMENT                |         |                                  |         |        |          |        |         |         | ○       | ○       | ○       | ○      | ○      | ○      | ○      | ○      | ○      | ○       | ○       | ○       | ○       | ○       | ○       | ○        | ○        | ○       | ○       | ○        | ○        | ○ |
| DRAG-LINK KIT                              |         |                                  |         |        |          |        |         |         | ○       | ○       | ○       | ○      | ○      | ○      | ○      | ○      | ○      | ○       | ○       | ○       | ○       | ○       | ○       | ○        | ○        | ○       | ○       | ○        | ○        | ○ |
| ELECTRICAL PARTS                           |         |                                  |         |        |          |        |         |         |         |         |         |        |        |        |        |        |        |         |         |         |         |         |         |          |          |         |         |          |          |   |
| COUNTER SELECT CONNECTOR                   | P.13    |                                  |         |        |          |        |         | ○       | ○       | ○       | ○       |        |        |        |        |        |        |         |         |         |         |         |         |          |          |         |         |          |          |   |
| BATTERY CHARGING KIT (Only For MZ type)    | P.50    |                                  |         |        |          |        |         |         |         |         |         |        |        |        |        |        |        |         |         |         |         |         |         |          |          |         |         |          |          |   |
| RECTIFIER SET (Only For MZ type)           | P.50    |                                  |         |        |          |        |         |         |         |         |         |        |        |        |        |        |        |         |         |         |         |         |         |          |          |         |         |          |          |   |
| RECEPTACLE KIT (Only For MZ type)          | P.50    |                                  |         |        |          |        |         |         |         |         |         |        |        |        |        |        |        |         |         |         |         |         |         |          |          |         |         |          |          |   |
| BATTERY ISOLATOR LEAD SET                  | P.51    | ○                                | ○       | ○      | ○        | ○      | ○       | ○       | ○       | ○       | ○       |        |        |        |        |        |        | ○       | ○       | ○       |         |         |         |          |          |         |         |          |          |   |
| ELECTRIC STARTER KIT (Only For MZ type)    | P.51    |                                  |         |        |          |        |         |         |         |         |         |        |        |        |        |        |        | ○       | ○       | ○       |         |         |         |          |          |         |         |          |          |   |

| ITEM<br>Applicable for Tiller Handle    | PAGE    | DF90A                                      | DF70A   | DF60A | DF60AV | DF50A | DF50AV | DF40A | DF30A | DF25A | DF20A | DF15A | DF9.9B | DF9.9A | DF8A | DF6A | DF5A | DF4A | DF2.5 |   |
|---|---------|--|---------|-------|--------|-------|--------|-------|-------|-------|-------|-------|--------|--------|------|------|------|------|-------|---|
|   |         | MECHANICAL REMOTE CONTROL (CAN CONNECTION) | P.18-29 |       |        |       |        |       |       |       |       |       |        |        |      |      |      |      |       |   |
| MECHANICAL REMOTE CONTROL               | P.30-31 |  |         |       |        |       |        |       |       |       |       |       |        |        |      |      |      |      |       |   |
| REMOTE-CONTROL ATTACHMENT KIT           | P.23-24 |  |         |       |        |       |        |       |       |       |       |       |        |        |      |      |      |      |       |   |
| STEERING                                | P.48-49 |  |         |       |        |       |        |       |       |       |       |       |        |        |      |      |      |      |       |   |
| TILLER HANDLE KIT                       |         |  |         |       |        |       |        |       |       |       |       |       |        |        |      |      |      |      |       |   |
| DUAL-ENGINE TIE-BAR                     |         |  |         |       |        |       |        |       |       |       |       |       |        |        |      |      |      |      |       |   |
| STEERING EXTENSION KIT                  |         |  |         |       |        |       |        |       |       |       |       |       |        |        |      |      |      |      |       |   |
| STEERING-BRACKET ATTACHMENT             |         | ○  | ○       | ○     | ○      | ○     | ○      | ○     | ○     | ○     | ○     | ○     | ○      | ○      | ○    | ○    | ○    | ○    | ○     | ○ |
| DRAG-LINK KIT                           |         |  |         |       |        |       |        |       |       |       |       |       |        |        |      |      |      |      |       |   |
| ELECTRICAL PARTS                        |         |  |         |       |        |       |        |       |       |       |       |       |        |        |      |      |      |      |       |   |
| COUNTER SELECT CONNECTOR                | P.13    |  |         |       |        |       |        |       |       |       |       |       |        |        |      |      |      |      |       |   |
| BATTERY CHARGING KIT (Only For MZ type) | P.50    |  |         |       |        |       |        |       |       |       |       |       |        |        |      |      |      |      |       |   |
| RECTIFIER SET (Only For MZ type)        | P.50    |  |         |       |        |       |        |       |       |       |       |       |        |        |      |      |      |      |       |   |
| RECEPTACLE KIT (Only For MZ type)       | P.50    |  |         |       |        |       |        |       |       |       |       |       |        |        |      |      |      |      |       |   |
| BATTERY ISOLATOR LEAD SET               | P.51    |  |         |       |        |       |        |       |       |       |       |       |        |        |      |      |      |      |       |   |
| ELECTRIC STARTER KIT (Only For MZ type) | P.51    |  |         |       |        |       |        |       |       |       |       |       |        |        |      |      |      |      |       |   |



APPLICATION CHART

| ITEM<br>Applicable for Tiller Handle    | PAGE    | DF90ATH                                    | DF70ATH | DF60AQH | DF60AVTH | DF50AQH | DF50AVTH | DF40AQH | DF30A | DF30AQH | DF25A | DF25AQH | DF20A | DF20ATH | DF15A | DF15ATH | DF9.9B | DF9.9BTH | DF9.9A | DF8A | DF6A | DF5A | DF4A | DF2.5 |   |
|---|---------|--|---------|---------|----------|---------|----------|---------|-------|---------|-------|---------|-------|---------|-------|---------|--------|----------|--------|------|------|------|------|-------|---|
|   |         | MECHANICAL REMOTE CONTROL (CAN CONNECTION) | P.18-29 |         |          |         |          |         |       |         |       |         |       |         |       |         |        |          |        |      |      |      |      |       |   |
| MECHANICAL REMOTE CONTROL               | P.30-31 |  |         |         |          |         |          |         |       |         |       |         |       |         |       |         |        |          |        |      |      |      |      |       |   |
| REMOTE-CONTROL ATTACHMENT KIT           | P.23-24 |  |         |         |          |         |          |         |       |         |       |         |       |         |       |         |        |          |        |      |      |      |      |       |   |
| STEERING                                | P.48-49 |  |         |         |          |         |          |         |       |         |       |         |       |         |       |         |        |          |        |      |      |      |      |       |   |
| TILLER HANDLE KIT                       |         |  |         |         |          |         |          |         |       |         |       |         |       |         |       |         |        |          |        |      |      |      |      |       |   |
| DUAL-ENGINE TIE-BAR                     |         |  |         |         |          |         |          |         |       |         |       |         |       |         |       |         |        |          |        |      |      |      |      |       |   |
| STEERING EXTENSION KIT                  |         |  |         |         |          |         |          |         |       |         |       |         |       |         |       |         |        |          |        |      |      |      |      |       |   |
| STEERING-BRACKET ATTACHMENT             |         | ○  | ○       | ○       | ○        | ○       | ○        | ○       | ○     | ○       | ○     | ○       | ○     | ○       | ○     | ○       | ○      | ○        | ○      | ○    | ○    | ○    | ○    | ○     | ○ |
| DRAG-LINK KIT                           |         |  |         |         |          |         |          |         |       |         |       |         |       |         |       |         |        |          |        |      |      |      |      |       |   |
| ELECTRICAL PARTS                        |         |  |         |         |          |         |          |         |       |         |       |         |       |         |       |         |        |          |        |      |      |      |      |       |   |
| COUNTER SELECT CONNECTOR                | P.13    |  |         |         |          |         |          |         |       |         |       |         |       |         |       |         |        |          |        |      |      |      |      |       |   |
| BATTERY CHARGING KIT (Only For MZ type) | P.50    |  |         |         |          |         |          |         |       |         |       |         |       |         |       |         |        |          |        |      |      |      |      |       |   |
| RECTIFIER SET (Only For MZ type)        | P.50    |  |         |         |          |         |          |         |       |         |       |         |       |         |       |         |        |          |        |      |      |      |      |       |   |
| RECEPTACLE KIT (Only For MZ type)       | P.50    |  |         |         |          |         |          |         |       |         |       |         |       |         |       |         |        |          |        |      |      |      |      |       |   |
| BATTERY ISOLATOR LEAD SET               | P.51    |  |         |         |          |         |          |         |       |         |       |         |       |         |       |         |        |          |        |      |      |      |      |       |   |
| ELECTRIC STARTER KIT (Only For MZ type) | P.51    |  |         |         |          |         |          |         |       |         |       |         |       |         |       |         |        |          |        |      |      |      |      |       |   |

### REFERENCE

Part Number 15-digit alpha-numerical number shows Part Number to be used for ordering.  
 Applicable Model Shows typical or recommended models of ENGINES that RIGGING-PARTS and ACCESSORIES can be installed to.

### MODEL NAME AND ENGINE NUMBER

NOTE: Items and their part numbers showing in this catalogue are basically applicable to models of following engine numbers. Please consult your local dealers regarding other models and their rigging-parts and accessories.

| model    | engine number  | model    | engine number  | model  | engine number  |
|----------|----------------|----------|----------------|--------|----------------|
| DF350AMD | 35001D-440001- | DF175A   | 17503F-440001- | DF70A  | 07003F-440001- |
| DF350A   | 35001F-440001- | DF175AZ  | 17503Z-440001- | DF60A  | 06002F-440001- |
| DF325A   | 32501F-440001- | DF150AP  | 15003P-440001- | DF60AV | 06003F-440001- |
| DF300BMD | 30001D-440001- | DF150A   | 15003F-440001- | DF50A  | 05003F-440001- |
| DF300B   | 30003F-440001- | DF150AZ  | 15003Z-440001- | DF50AV | 05004F-440001- |
| DF300AP  | 30002P-440001- | DF140B   | 14005F-440001- | DF40A  | 04003F-440001- |
| DF250AP  | 25003P-440001- | DF140BZ  | 14005Z-440001- | DF30A  | 03003F-440001- |
| DF250    | 25003F-440001- | DF140BG  | 14004F-440001- | DF25A  | 02504F-440001- |
| DF250Z   | 25003Z-440001- | DF140BZG | 14004Z-440001- | DF20A  | 02002F-440001- |
| DF225    | 22503F-440001- | DF115B   | 11505F-440001- | DF15A  | 01504F-440001- |
| DF225Z   | 22503Z-440001- | DF115BZ  | 11506Z-440001- | DF9.9B | 00995F-440001- |
| DF200    | 20002Z-440001- | DF115BG  | 11505Z-440001- | DF9.9A | 00994F-440001- |
| DF200Z   | 20002Z-440001- | DF115BZG | 11505Z-440001- | DF8A   | 00801F-440001- |
| DF200AP  | 20003P-440001- | DF100C   | 10005F-440001- | DF6A   | 00603F-440001- |
| DF200A   | 20003F-440001- | DF100B   | 10004F-440001- | DF5A   | 00503F-440001- |
| DF200AZ  | 20003Z-440001- | DF90A    | 09003F-440001- | DF4A   | 00403F-440001- |
| DF175AP  | 17503P-440001- | DF80A    | 08002F-440001- | DF2.5  | 00252F-440001- |